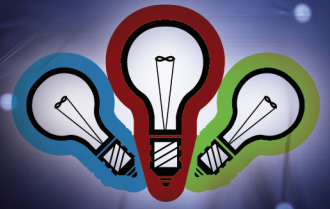


APPLICATION TIPS



COLOR FILL



UNIVERSAL
LASER SYSTEMS INC.

Color Fill Acrylic

Introduction

“Color can speak to the soul in a thousand different ways.” – Oscar Wilde

A dash of color is a great way to increase the beauty and value of many of the products you engrave. Color adds the perfect finishing touch to almost any item and helps distinguish your engraving services from the competition.

Color can be added to engraved items made of wood, glass, Corian®, acrylic, marble and many other materials. In this tip sheet you will learn how to add color acrylic. We hope you will find the process to be rewarding and enjoyable.

Sincerely,

The Universal Laser Systems Training Staff

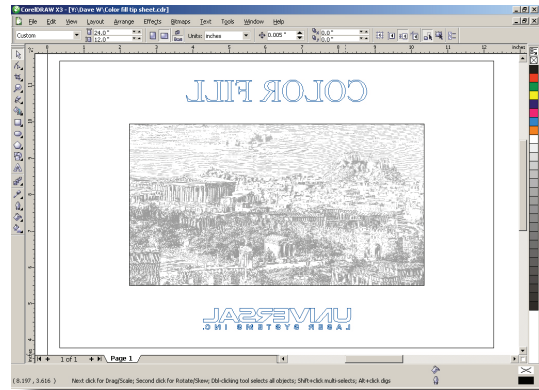
Color Filling Acrylic

Section 1: Preparing the Artwork

1.1: Import the design shown in Graphic 1 into CorelDRAW.

Note: If you do not have access to the file, you can create your own design in CorelDRAW or the Windows® based graphic software of your choice.

Note: Any graphics or text engraved onto acrylic must be mirrored as it will be seen from the opposite side when finished.



(GRAPHIC 1)

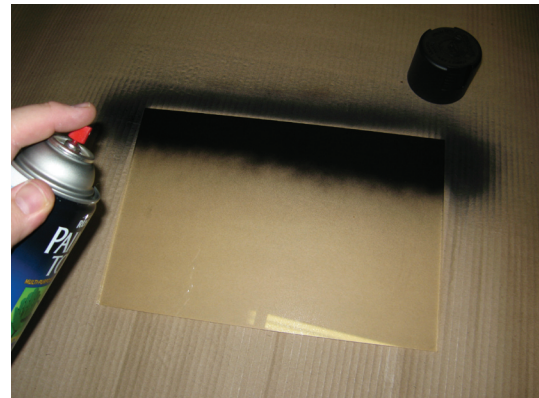
Section 2: Preparing the Material

2.1: Remove the protective mask from one side of an acrylic sheet and paint with the desired background color as shown in Graphic 2. For this project we used black as the background color. Be sure the acrylic is completely dry before handling.

Note: We recommend the use of TransferRite® transfer tape which is available in a variety of different widths, lengths and adhesion levels from www.denversignsupply.com.

Tip: You can paint the acrylic using readily available spray cans of multi-purpose enamel.

Tip: Paint the acrylic in a spray booth if possible, or in a clean, dust-free, well ventilated area. Hold the spray can 10 inches to 12 inches away from the work surface at a 45 degree angle and spray at an even pace.



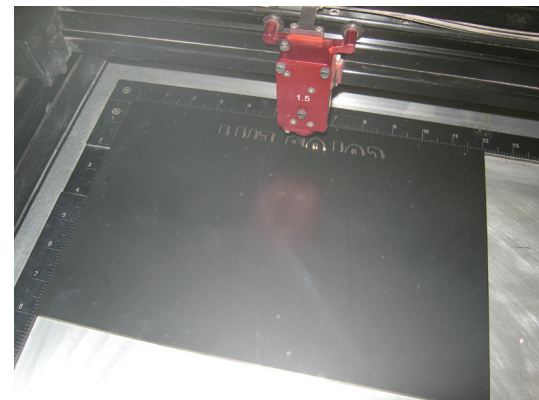
(GRAPHIC 2)

Section 3: Engraving the Acrylic

3.1: Place the acrylic sheet paint side “up” in the laser system and engrave the design as shown in Graphic 3. Apply enough laser power to penetrate through the paint and deeply into the acrylic.

Tip: Deeper engraving will provide a greater three-dimensional effect.

Tip: You can engrave on cast or extruded acrylic. Cast acrylic may give a frosted effect when engraved; to clear any frost, defocus the laser by 0.01 inch and engrave a second pass.



(GRAPHIC 3)

Section 4: Painting Multiple Colors on the Acrylic

4.1: Remove the acrylic from the laser system and mask over the two portions of text as shown in Graphic 4.

4.2: Paint the center graphic white as shown in Graphic 5 and let completely dry.

4.3: Remove the tape mask from the upper text, spray blue and let completely dry.

4.4: Remove the tape mask from the lower text, spray red and let completely dry as shown in Graphic 6.

4.5: Remove the tape mask from the front of the acrylic. Done!

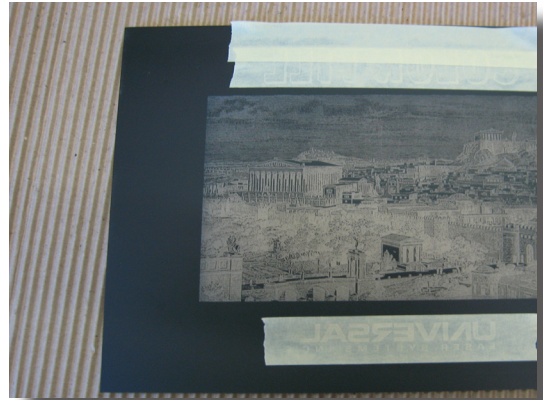
4.6: The finished reverse color fill acrylic sheet is shown in Graphic 7.

Tip: For a more finished appearance, glue felt to the back of the acrylic.

Section 5: Reverse Color Filling Other Materials

5.1: This same reverse color fill process can also be used on glass and acrylic mirrors with good results.

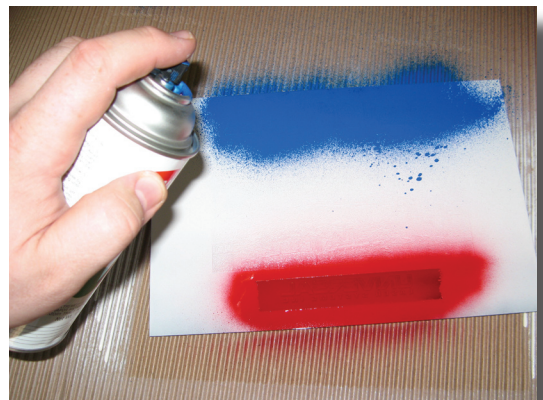
Note: When reverse color filling a mirror, you do not have to paint the unmasked side of the mirror with a background color.



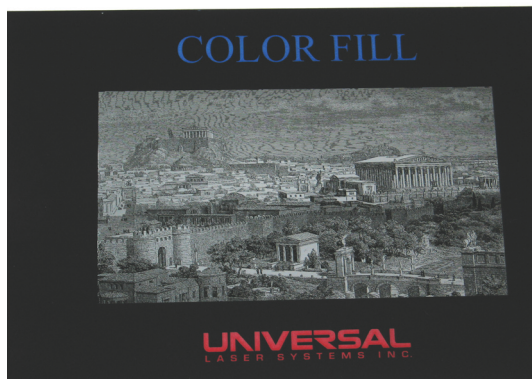
(GRAPHIC 4)



(GRAPHIC 5)



(GRAPHIC 6)



(GRAPHIC 7)