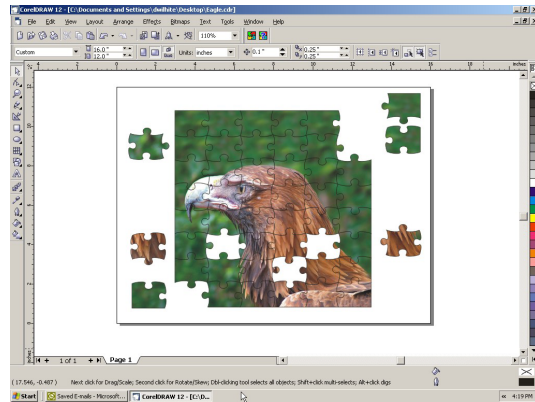
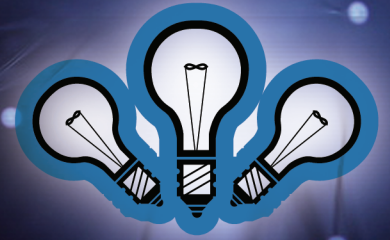


# APPLICATION TIPS



## Puzzle Creator for CoreIDRAW®

### Introduction

Jigsaw Puzzle Creator is an add-on for CoreIDRAW 11/12/X3/X4/X5/X6/X7 and Corel DESIGNER 10/12 which allows you to create jigsaw puzzle shapes out of any CoreIDRAW/Corel DESIGNER object or objects. Just import a photo, or create several shapes, select them and run the program. You will be able to create a professionally-looking jigsaw puzzle which uses the selected objects as the backdrop of the puzzle.

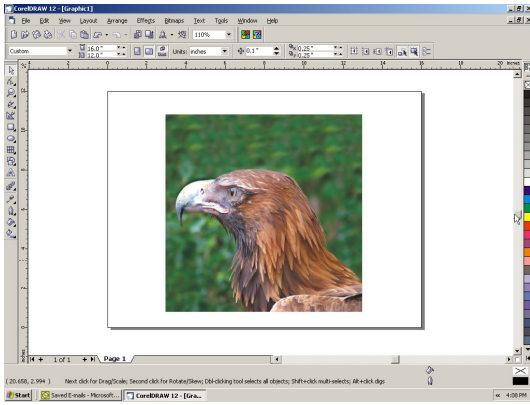
In this quick tutorial, you will learn the basic steps necessary to master Jigsaw Puzzle Creator, as well as a few advanced tips that will help you get the most out of the program and create truly professional-quality puzzles on your laser system.

Jigsaw Puzzle Creator for CoreIDRAW can be purchased for download online at [www.oberonplace.com](http://www.oberonplace.com). The program is also available as fully functional “try before you buy” shareware. The evaluation period is seven days, after which you must license the program to continue using it. The licensing fee is \$9.95.

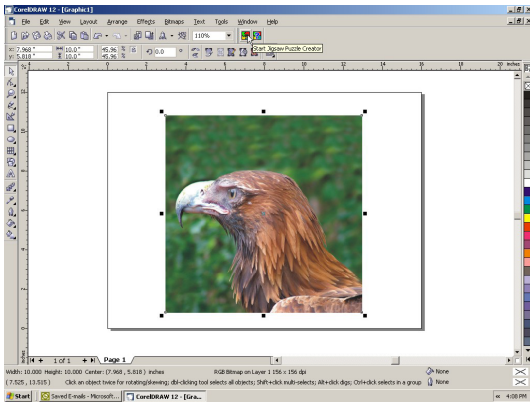
### Overview

Creating a puzzle with Jigsaw Puzzle Creator is easy: import the photo, drawing or pattern of your choice into CoreIDRAW, launch Jigsaw Puzzle Creator from CoreIDRAW's main menu, choose your puzzle settings from the pop-up dialog box and click “CREATE” to generate finished puzzle pieces. Following are step-by-step instructions for creating your first puzzle.

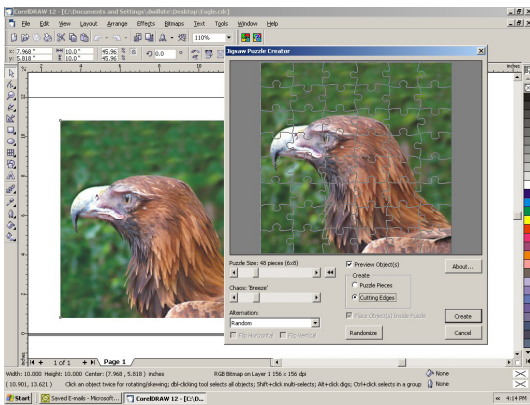
# Creating a Puzzle



1. Begin by importing the image you wish to make into puzzle into CorelDRAW. Resize the image if necessary so that it is the same approximate dimensions as the puzzle you wish to cut and/or engrave; for example, 10 inches x 10 inches.
2. Left click on the image to select it, then launch Jigsaw Puzzle Creator from the icon on your main toolbar.
3. A dialog box will pop up presenting various options for customizing your puzzle. These options include:

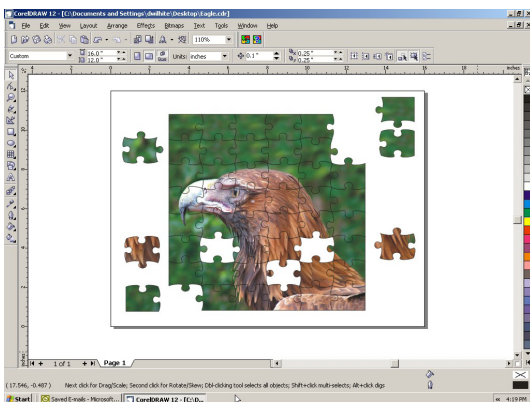


- Puzzle Size: Allows you to choose the number of puzzle pieces.
- Chaos: Controls the “randomness” of the puzzle pieces.
- Alternation: Controls the way the puzzle pieces are arranged.
- Preview Object(s): Gives you the option to view your image in the puzzle background.
- Create Puzzle Pieces/Cutting Edges: This important option defines two very different methods for creating puzzle pieces.



- Create Puzzle Pieces: Vector cuts each puzzle piece individually. Not recommended, as the laser actually traces the outline of each piece twice and can cause burning and charred edges.
- Create Cutting Edges: Generates sets of horizontal and vertical vector curves to cut out a puzzle in its entirety. This is the preferred method for creating a puzzle on a laser system.
- Place Object(s) Inside Puzzle: Automatically places your selected image in the puzzle background after processing; the puzzle can then be ungrouped and the individual pieces can be moved anywhere onscreen with its corresponding portion of the background image.
- Randomize: Generates random shape puzzle pieces.

4. After choosing your puzzle options, click “CREATE” to generate a finished puzzle.



5. Left click on the finished puzzle to select it and right-click RED from CorelDRAW's color palette to create vector cutting lines for your Universal laser system.

That's all there is to it. Enjoy!