

APPLICATION TIPS



Version 1.1



RUBBER STAMPS AND LASERS

Introduction

Rubber engraving using a Universal Laser System is easy and fast. With our laser engraving machines, rubber is an excellent material for laser cutting and engraving. Intricate art and text can be quickly and easily laser engraved to produce rubber stamps without chemicals. Universal laser systems feature a “rubber stamp mode” which allows for adjustable shoulders for the easy processing of rubber stamps.

Overview

Marking rubber can be done with any C02 laser system, however rubber does require a lot of laser power so a lower laser wattage will be slower to process.

Purchase your supplies: This process will require laser rubber material that is specially designed for making stamps and a self-inking stamp. For rubber stamp supplies go to: www.ulsinc.com/material-suppliers

**Consult manufacture instructions for self inking stampers on assembly. (not covered in this tip sheet)*

WARNING: If you experience flaming, STOP PROCESSING IMMEDIATELY! Your rubber stamp material may not be 100% compatible with laser engraving. You may need to either purchase better materials or add the Computer Controlled Compressed Air unit and attach either the Back Sweep or the Air Assist Cone (refer to the accessories section of your operations manual).

RUBBER STAMPS



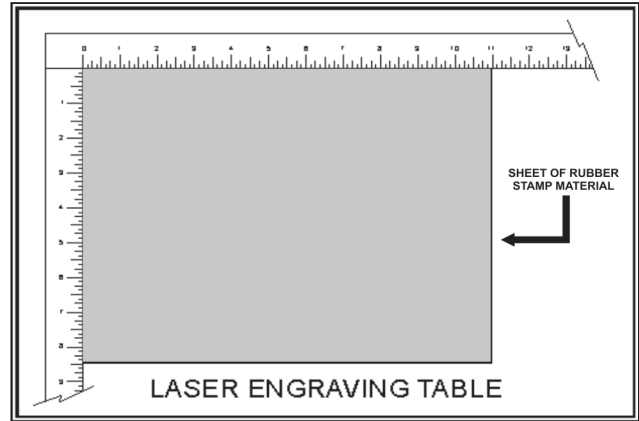
1. Draw a black box (solid black fill, no outline) slightly larger than your rubber stamp will be.



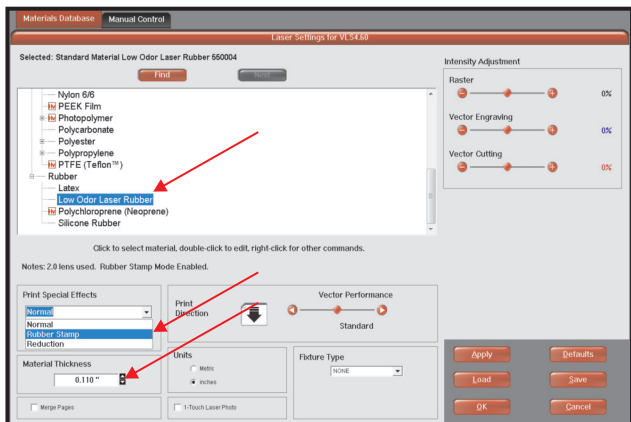
2. Type your text or place your logo in white over the black box.



3. Mirror your stamp (flip 180 degrees so it looks “backwards” but is right side up)



4. Place “LASER GRADE” rubber into you laser system to be processed.



5. Print file and select Plastic/Rubber then select the type of rubber. Select “Print Special Effects” and select “Rubber Stamp” and put in the Material thickness.



6. Engrave rubber stamp. (Air assist with air cone is recommended) Cut out the stamp with laser or scissors. Clean finished rubber stamp (“Simple Green” cleaner works best) and place onto stamp.