

## READ FIRST!

This document assumes you have already downloaded the driver installer ZIP package from either the \*Universal Laser Systems Website or †Universal Laser Systems FTP site.

\*ULS Website Drivers Link - <http://www.ulsinc.com/downloads/>

†ULS FTP Link - [http://63.253.136.155/support/Drivers%20&%20Firmware/Drivers\\_M\\_V\\_X/Windows%2010/](http://63.253.136.155/support/Drivers%20&%20Firmware/Drivers_M_V_X/Windows%2010/)

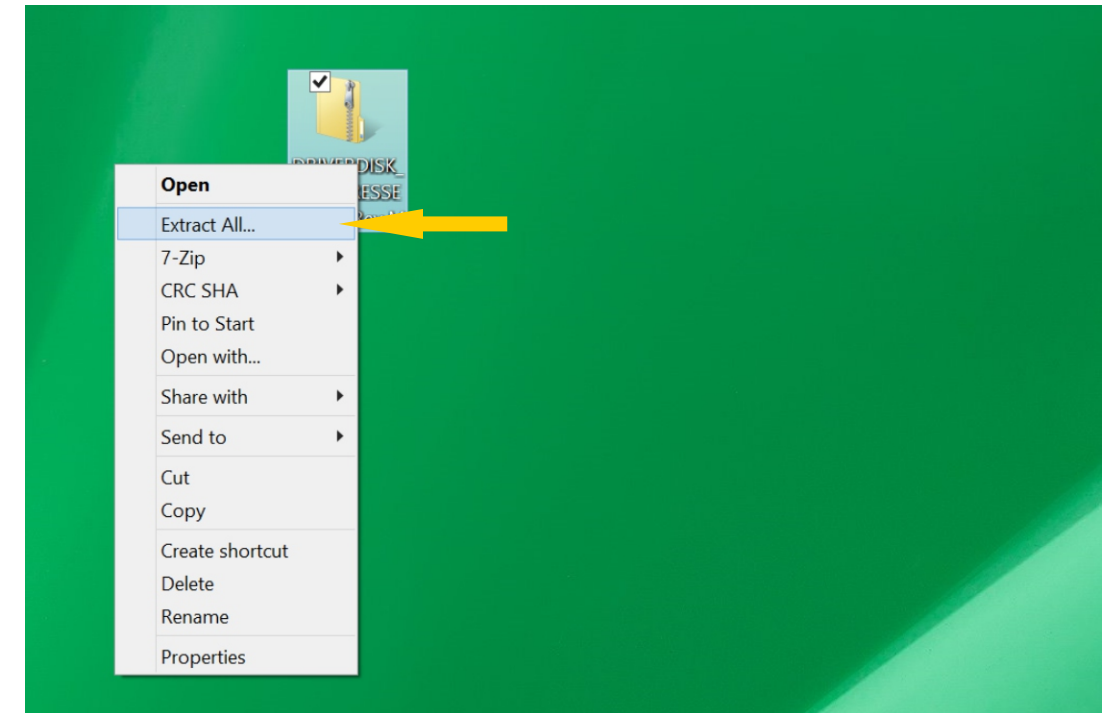


Make sure that all patches and updates to your operating system have been performed. Sometimes there are patches to Windows 10 due to software flaws and must be installed prior to installing ULS drivers.

For ease of explanation, I have selected V Class as the engraver to install the driver onto a Windows 10 computer. You will need to ensure that you select the same model in the driver as what the engraver displays when it boots up – failure to use the correct driver will result in a driver conflict error.

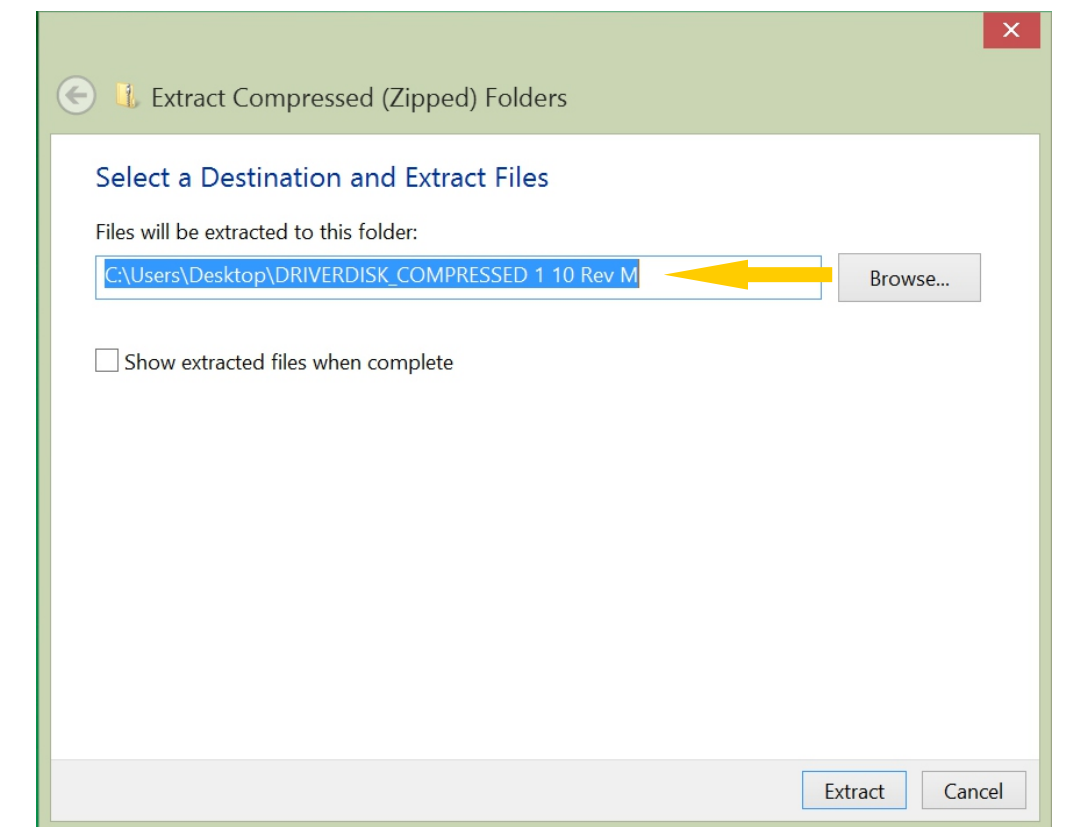
### Step 1

Locate the downloaded ZIP File and right-click on it to extract it. Select **Extract All** to bring up the wizard to unzip the file. If you don't have a built-in extraction utility such as this, you will need to use WinZip or other extraction utility to unzip the ZIP file.



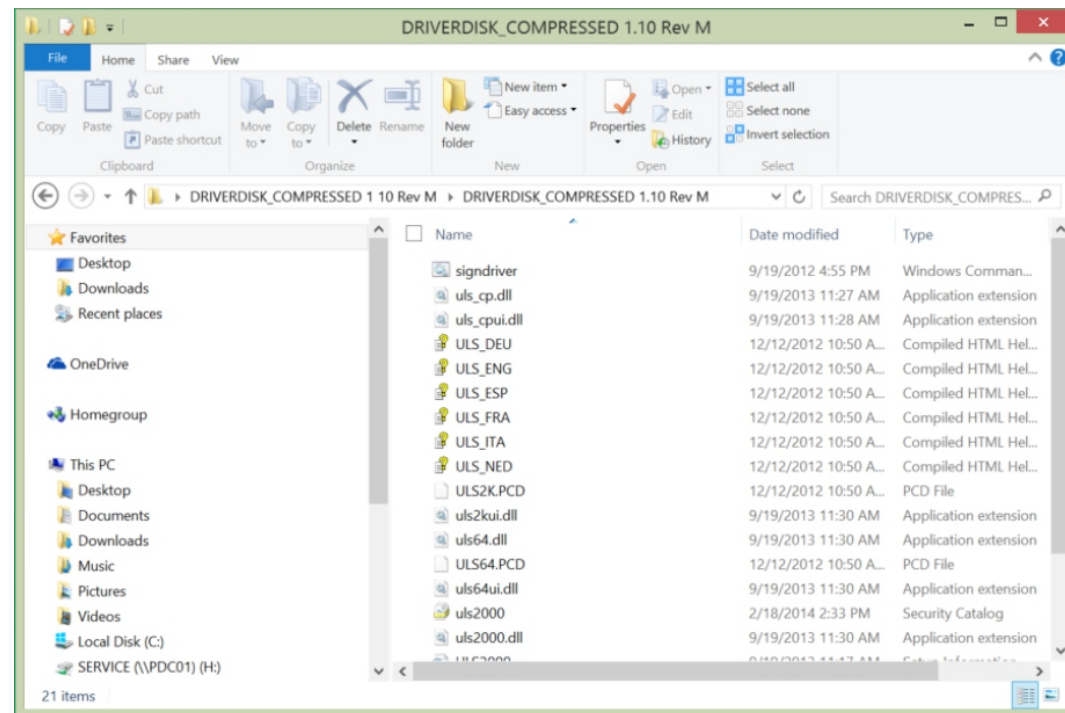
### Step 2

Follow through the default steps to extract the ZIP folder to your desktop (or other place you can easily find on your computer). When the extraction wizard closes, you should see the extracted folder appear on your desktop named **C:\Users\Desktop\DRIVERDISK\_COMPRESSED 1 10 Rev M**.



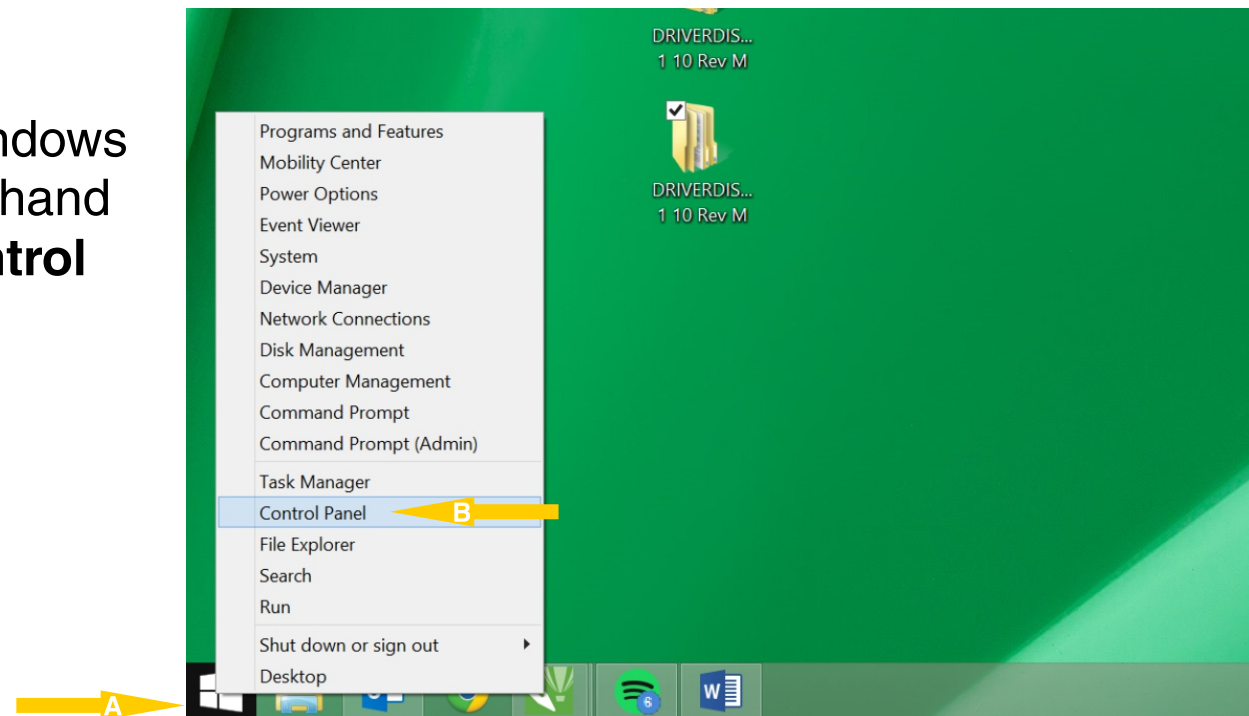
## Step 3

**Double Click** and open folder to make sure you have multiple files. If there isn't any files in folder please call ULS Tech Support ASAP. Direct Line is 480-609-0297



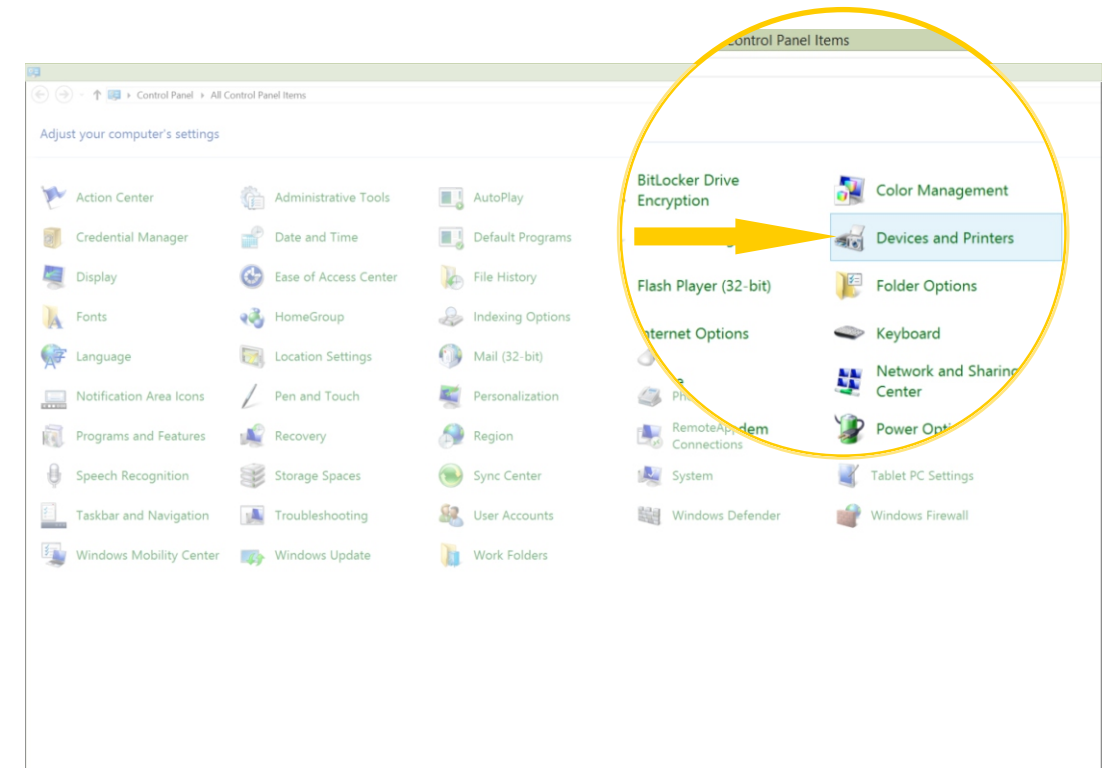
## Step 4

**A** Right Click the Windows Icon in the lower left hand corner. **B** Select **Control Panel**.



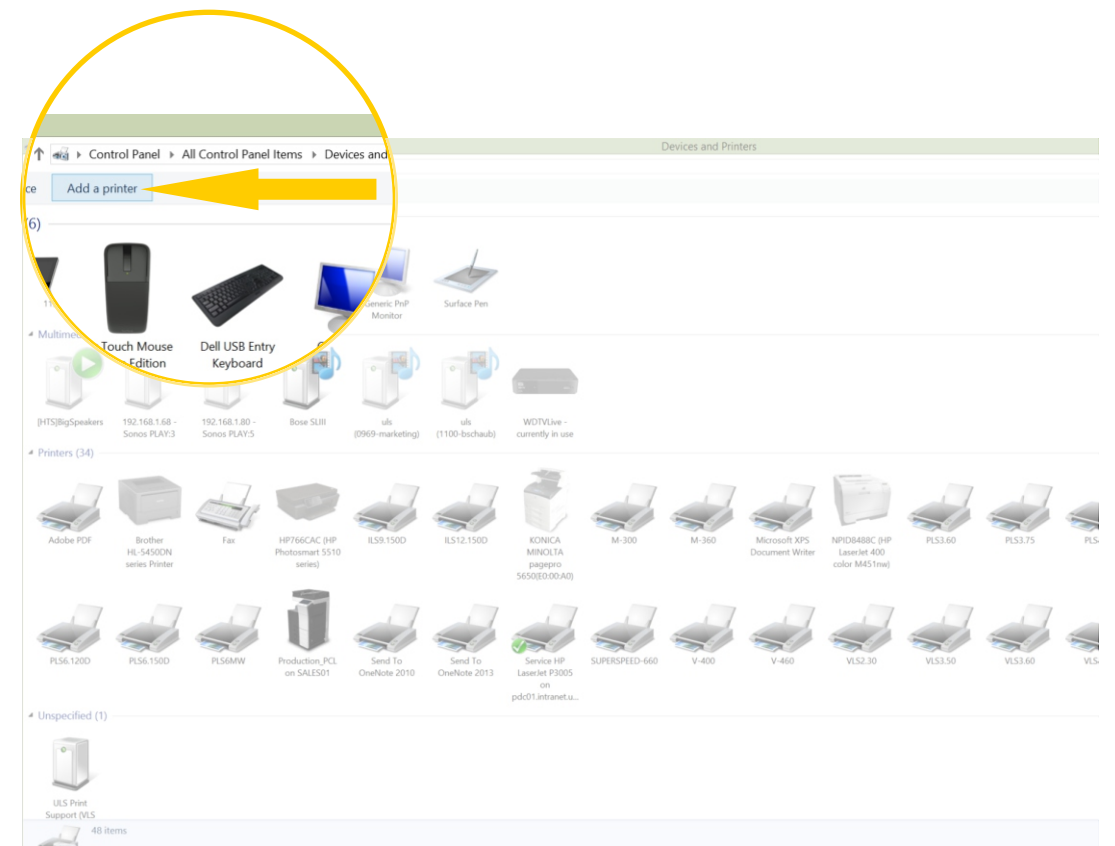
## Step 5

Select **Devices and Printers**.



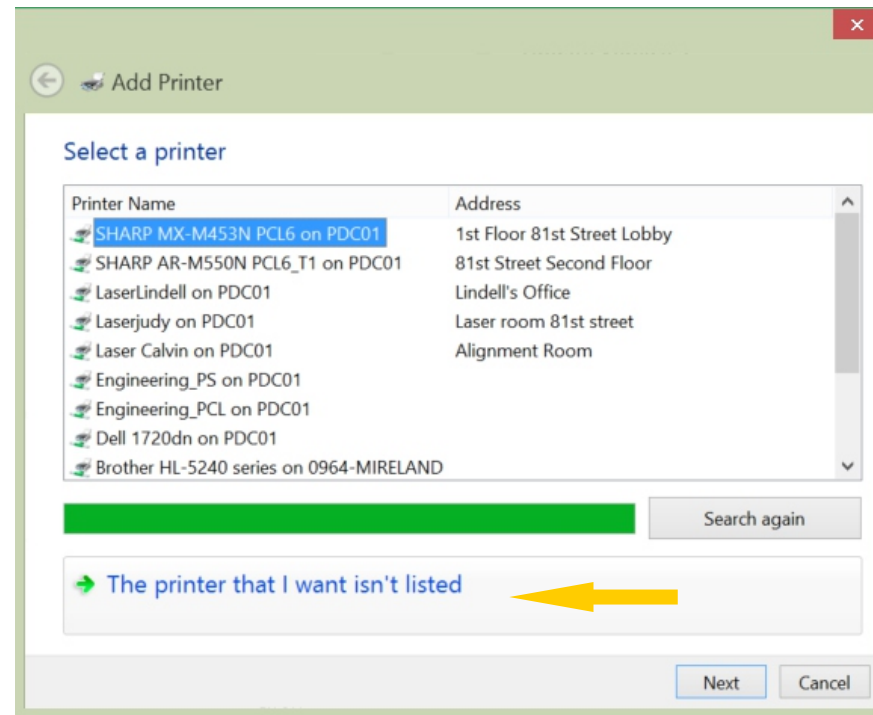
## Step 6

Select **Add Printer**.



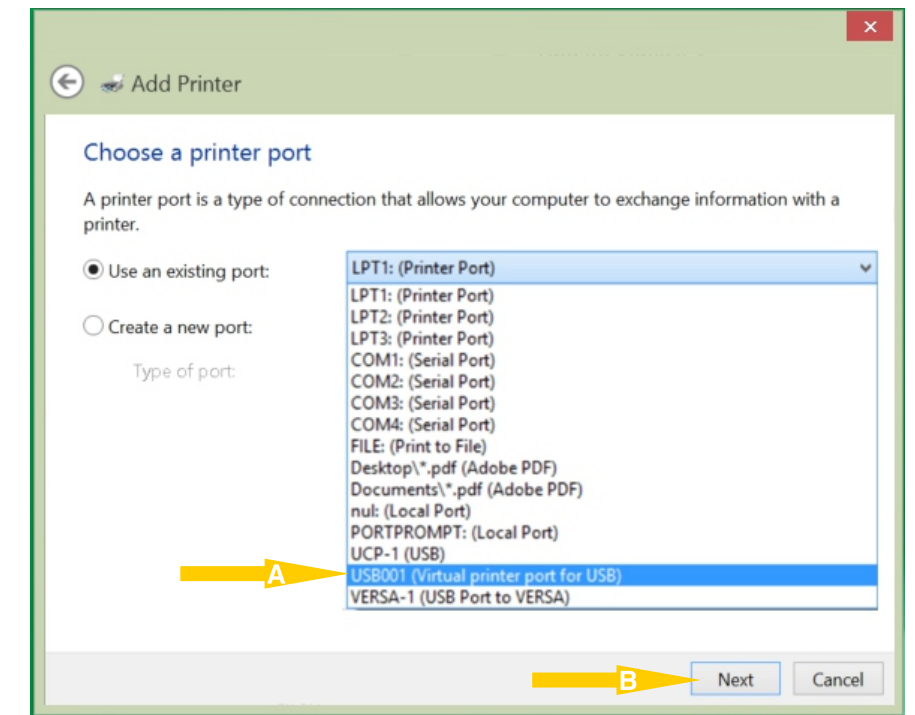
## Step 7

Select The printer that I want isn't Listed.



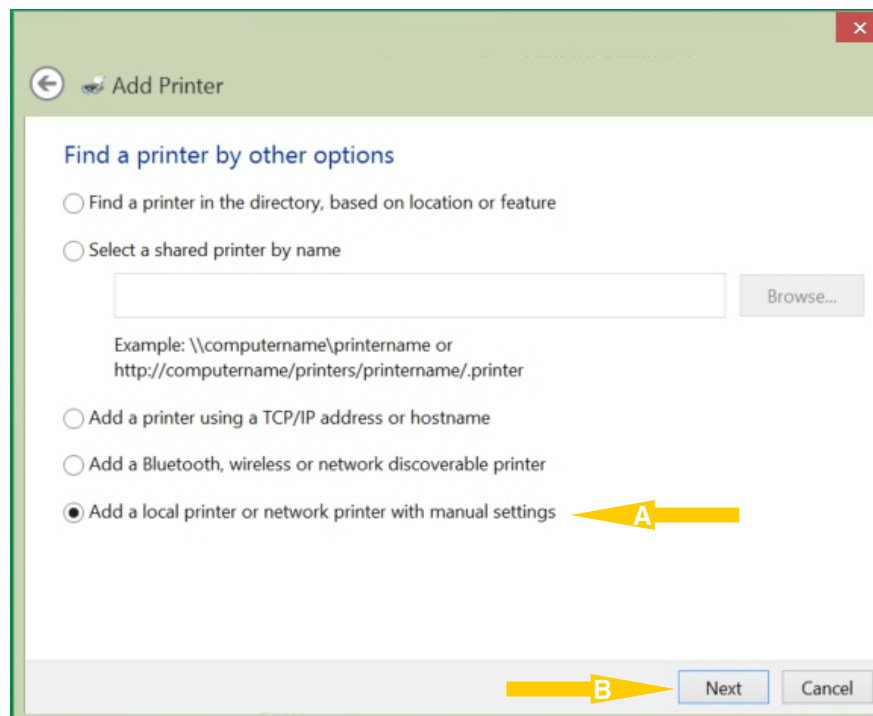
## Step 9

Select USB001 (Virtual printer port for USB). Then Next.



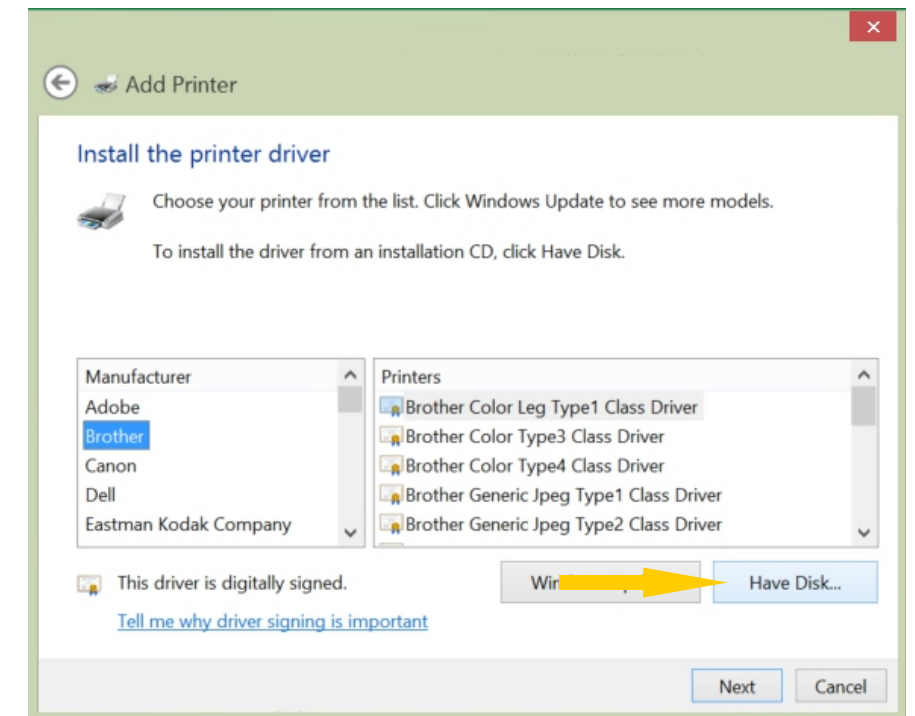
## Step 8

Select Add a local printer or network printer with manual settings. Then Next.



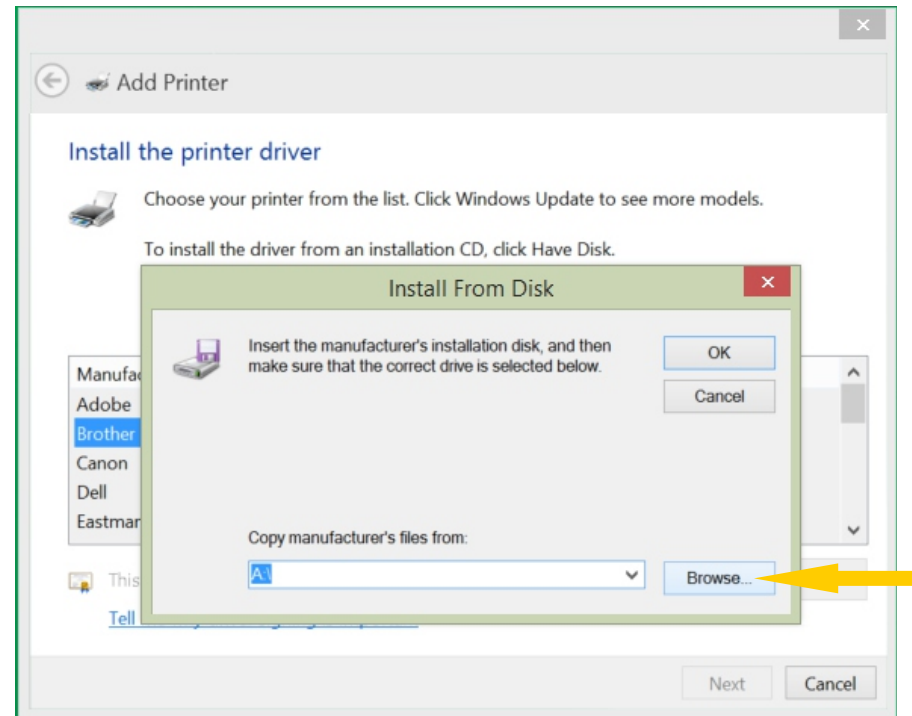
## Step 10

Select Have Disk...



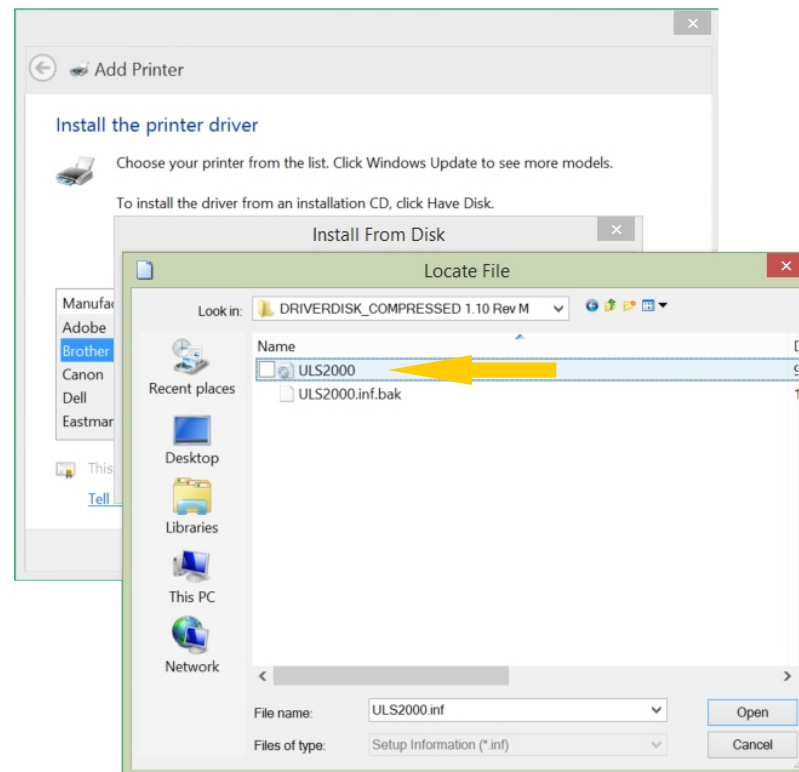
## Step 11

An **Install From Disk** window opens, click on the **Browse** button.



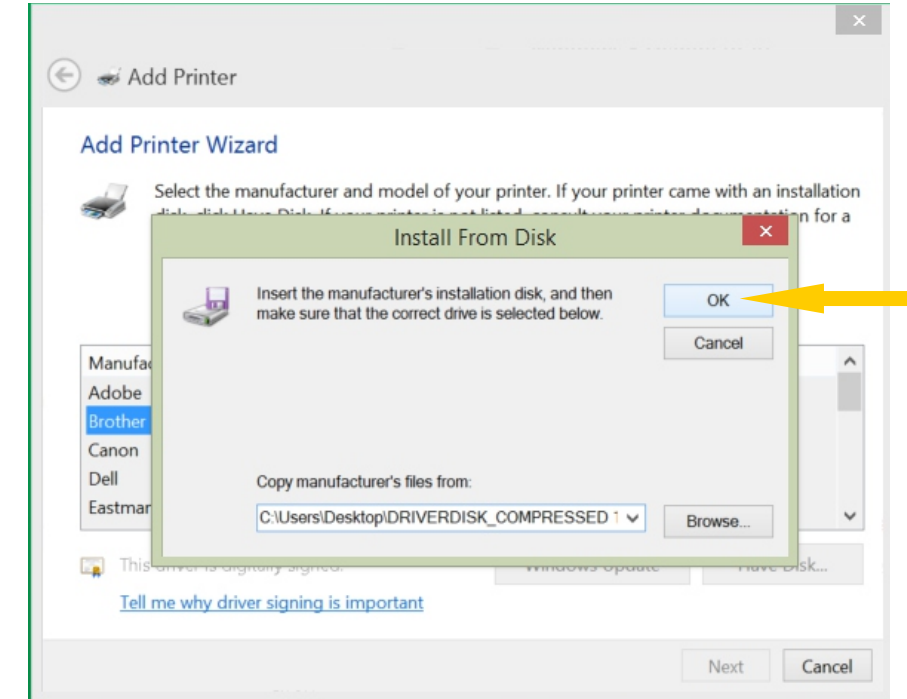
## Step 12

The **Locate File** window opens. Use this window to navigate to the driver folder that you previously unzipped. Inside that folder, you will see a file named **ULS2000.inf**. The .inf extension may be hidden but this is not a problem. **Double-Click** on the **ULS2000.inf** file.



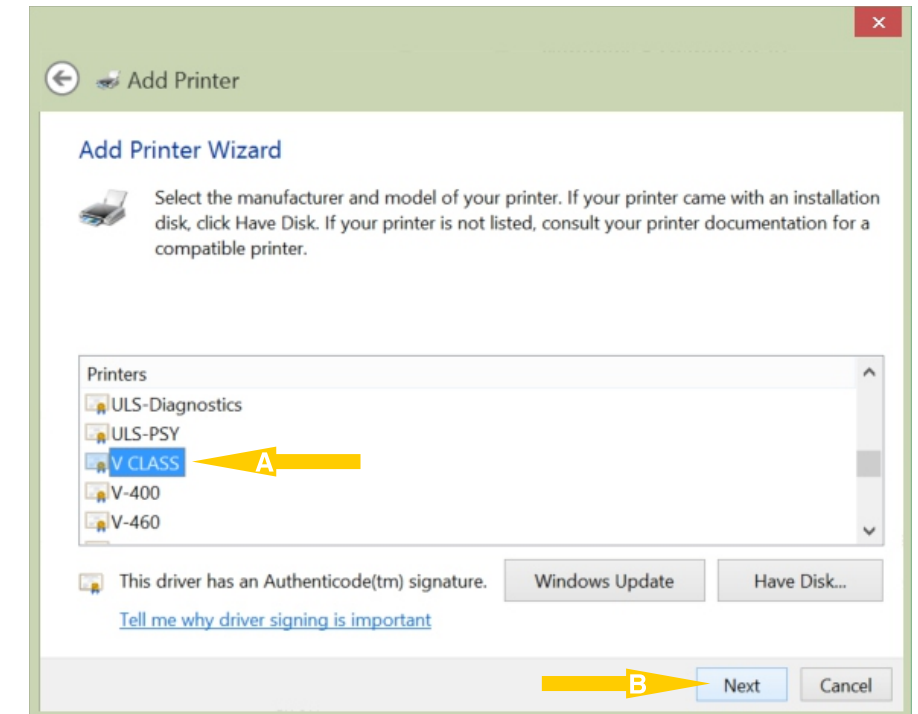
## Step 13

After the ULS2000.inf file is clicked on, the **Locate File** window will disappear leaving only the **Install From Disk** window and the **Add Printer Wizard** window. On the **Install From Disk** window, click **OK** and the “Install From Disk” window will close leaving only the “Add Printer Wizard” window.



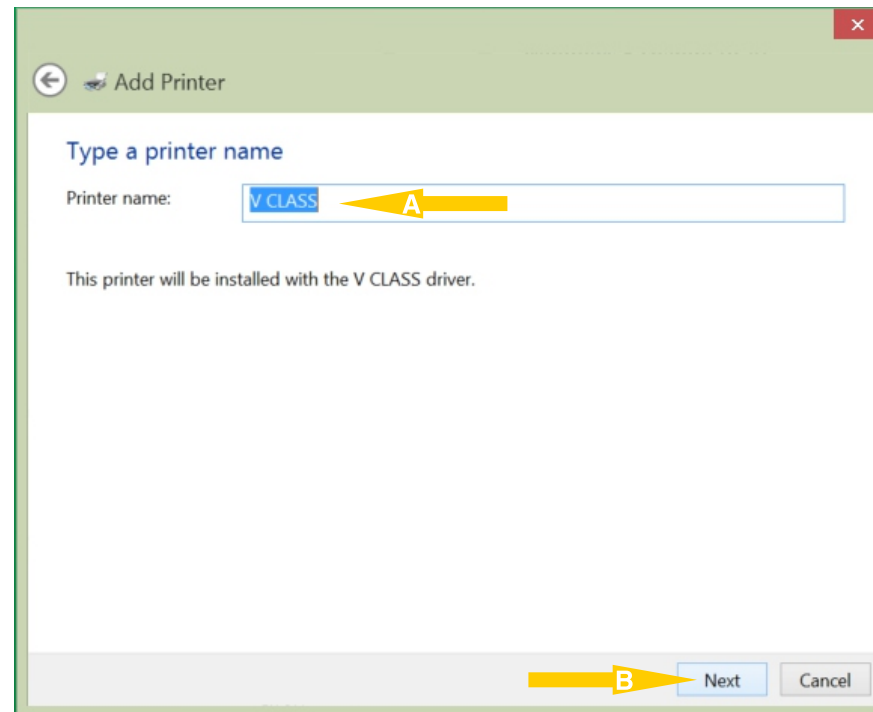
## Step 14

On the **Add Printer Wizard** window, scroll through the available list to select the driver you wish to install. **A** In this example, I have selected **V CLASS**. At this time, make sure you select the correct model driver for your system! After selecting your driver model, **B** click **Next**.



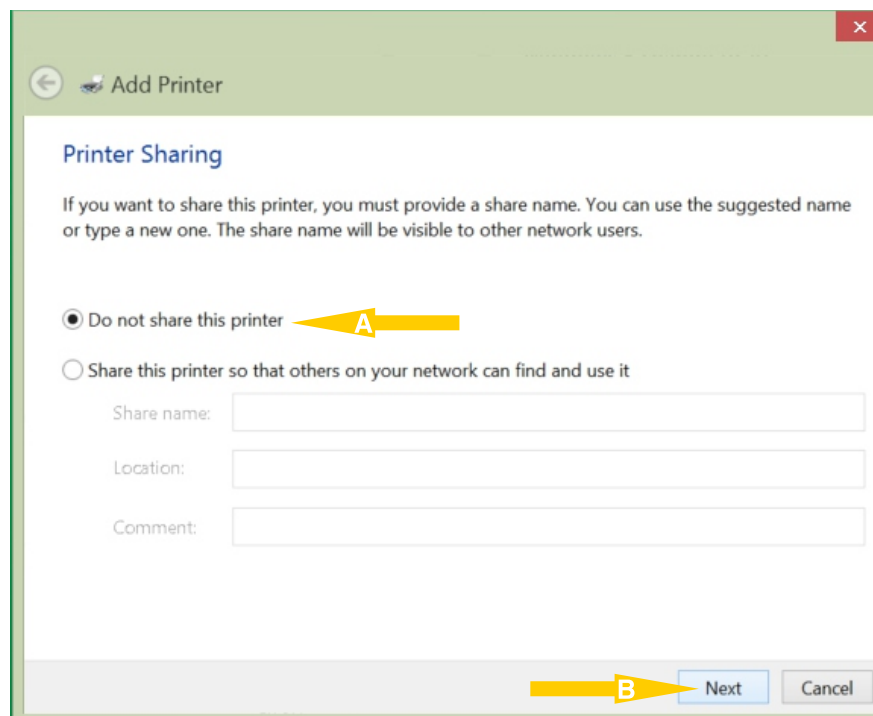
## Step 15

**A** Ensure that the printer name reads the same as the model you select and then **B** click **Next**. It is not necessary to choose the default setting at this point as that can be changed at any time after driver is installed.



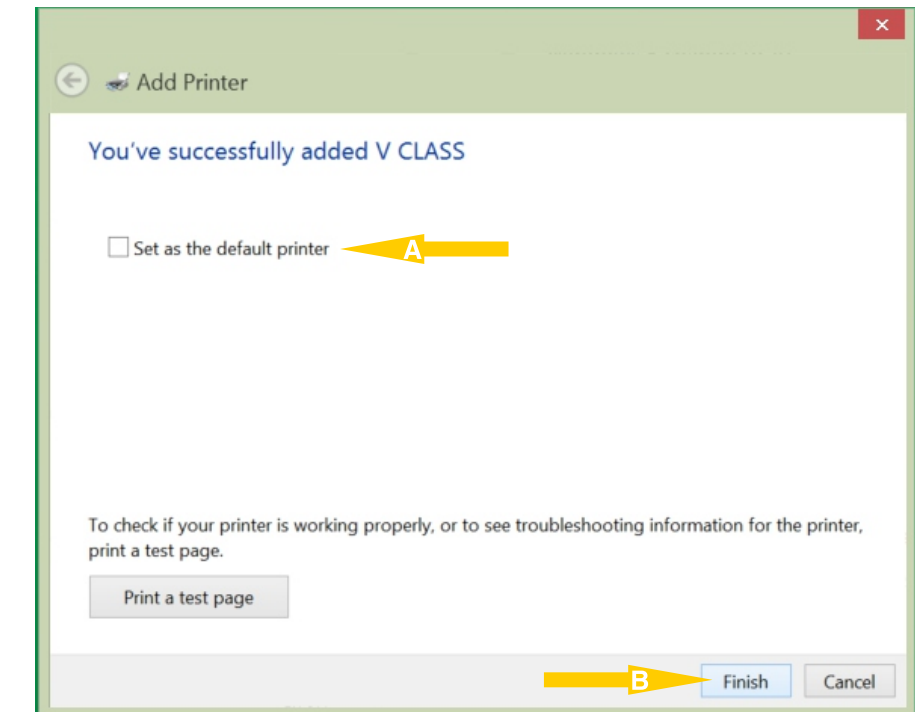
## Step 16

**A** Ensure that **Do not share this printer** is selected and then **B** click **Next**. If you want share the with other systems you can refer to the Printer Sharing and Networking procedure.



## Step 17

You can set the printer at this point to be the **A Default Printer**. This can be changed at any time later by selecting the default printer in the Devices & Printers folder. **B** Click **Finish** to complete the install.



## Step 18

**Done!** The **Devices & Printers** folder will now show the **V Class** as an available printer.

