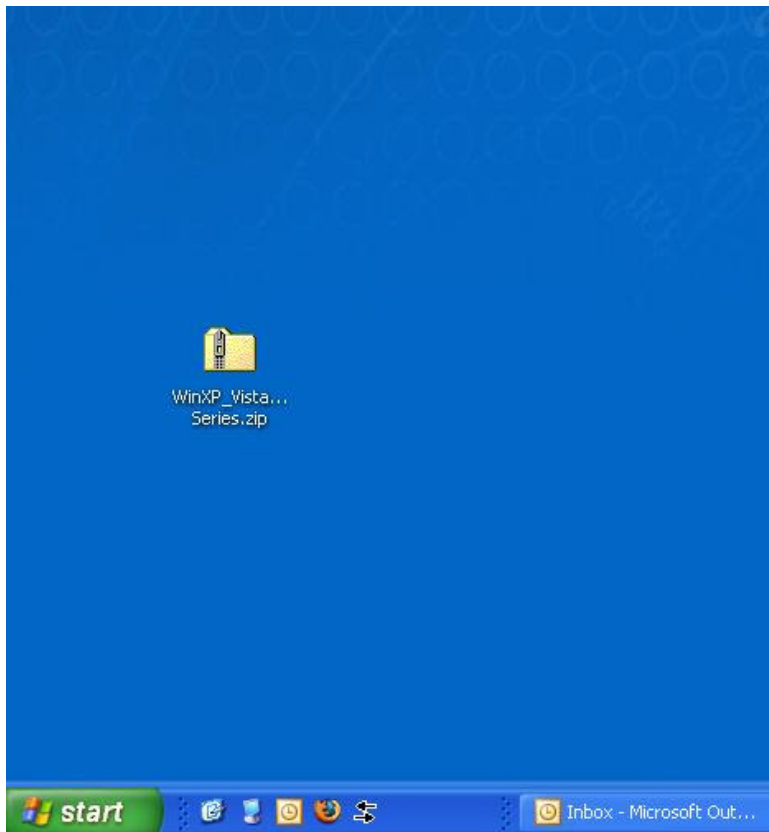


Universal Laser Systems Printer Driver Installation Guide

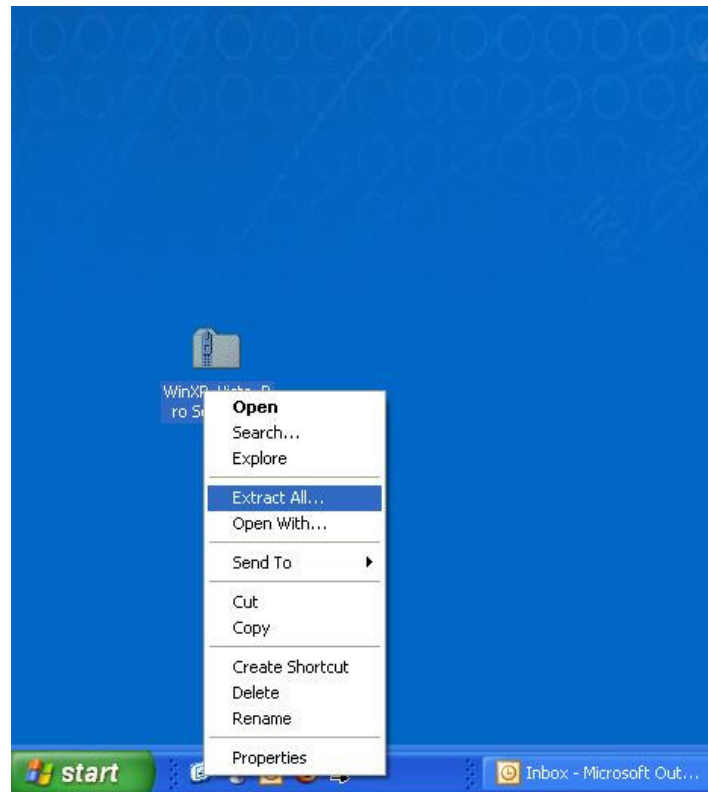
This quick install guide will show, step by step, how to install the printer drivers that have been downloaded from the Universal Laser Systems FTP site.

This procedure is used only as an example. The ZIP file you download will probably have a different name as well as the ULS engraver you are using. **For this example only**, the engraver model is the **V-460** and the ZIP file downloaded is called **WinXP_Vista_Pro_Series.zip**.

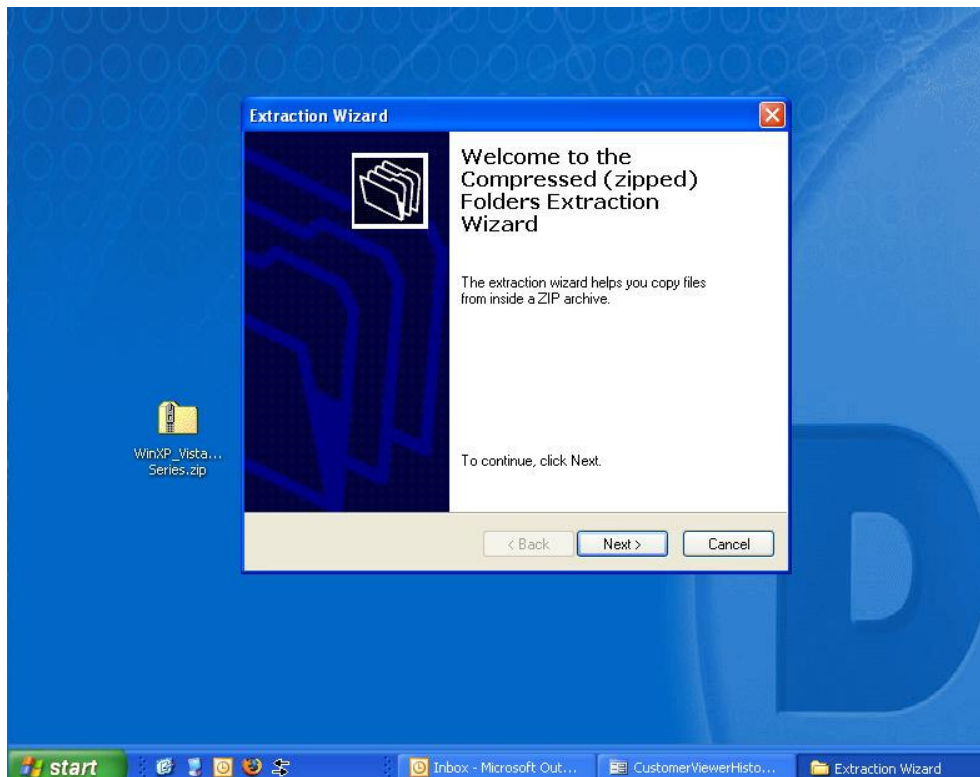
Step 1 – The ZIP file downloaded from the Universal Laser Systems FTP site appears on your desktop. In this example, the downloaded file is called **WinXP_Vista_Pro Series.zip**. The file you download will probably have a different name but the install procedure is the same, regardless of ZIP file name.



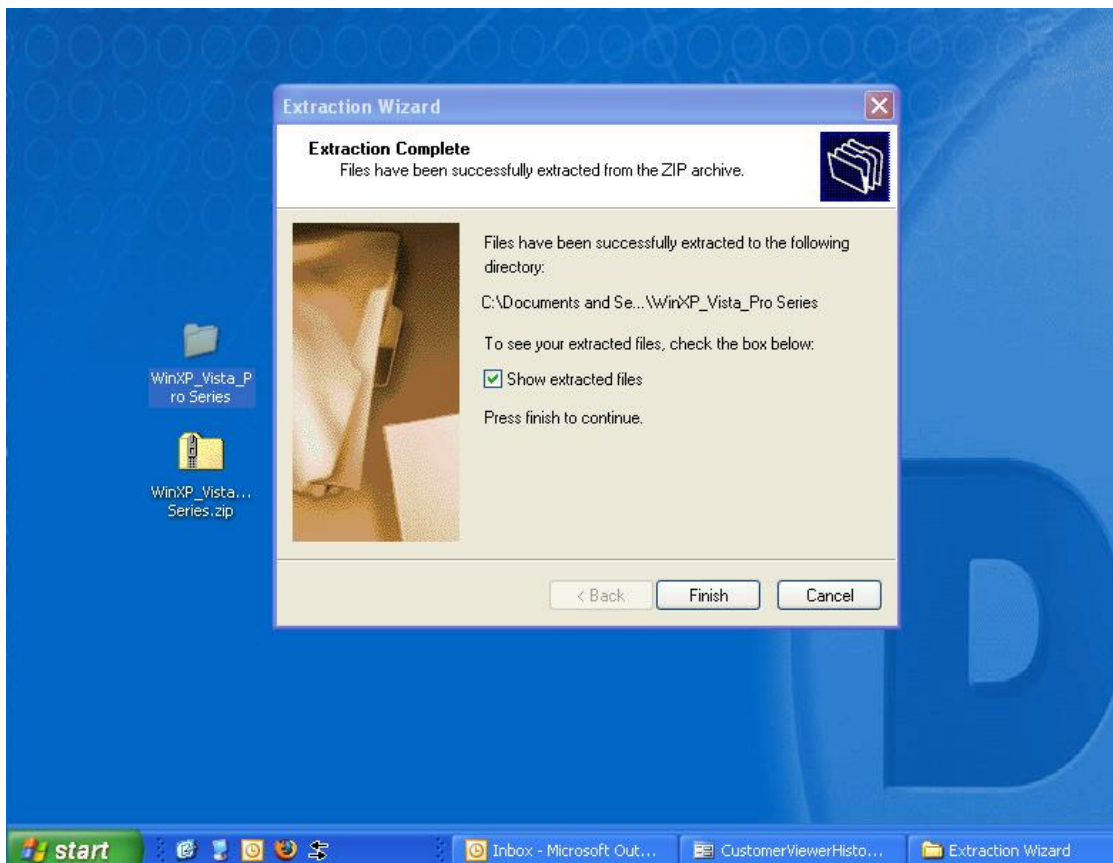
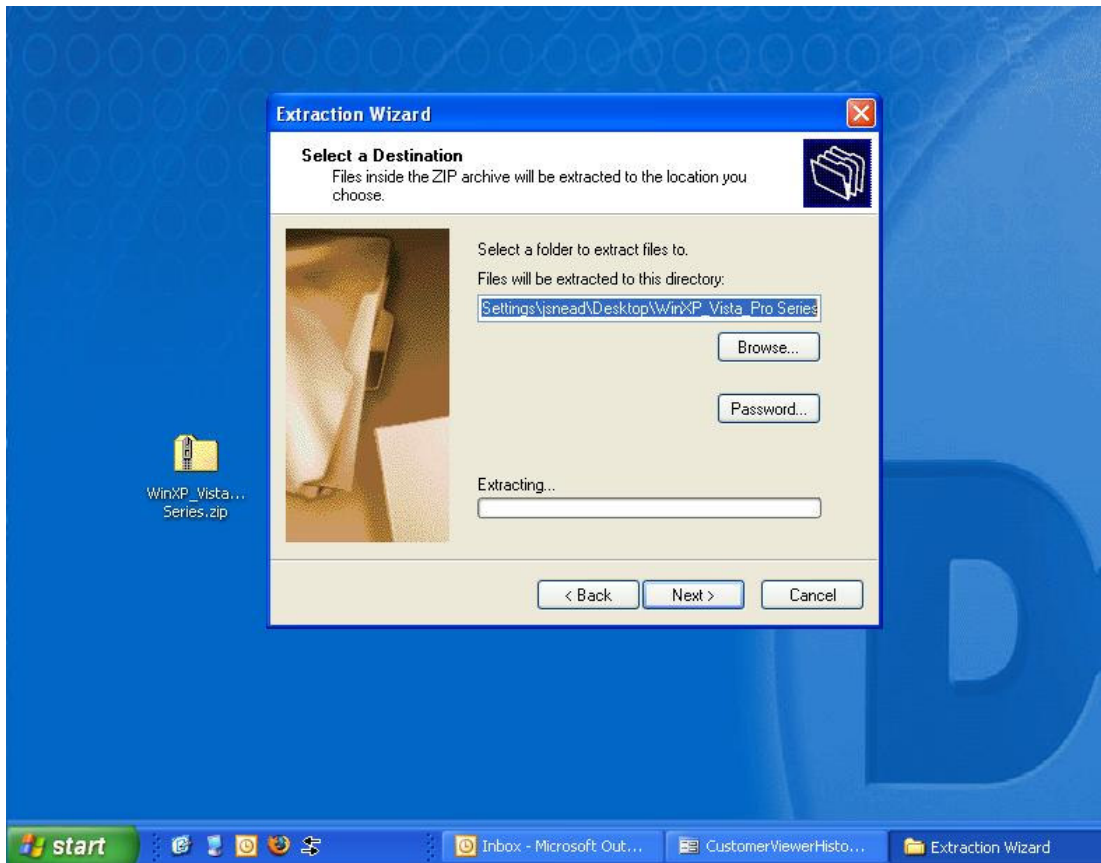
Step 2 – Extract the contents of the folder by right clicking on the .zip file and selecting **Extract All...**:



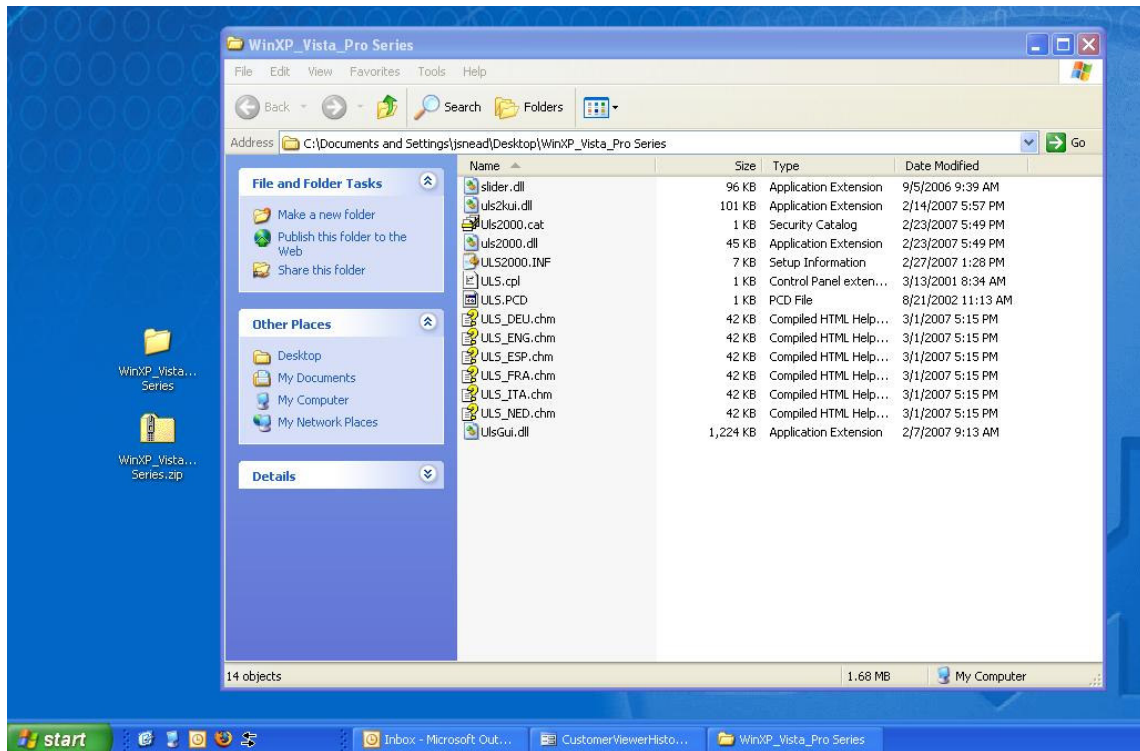
Step 3 – Use the wizard to extract the driver folder:



Step 4 – Continue with the wizard to finish extracting the driver folder to your desktop:



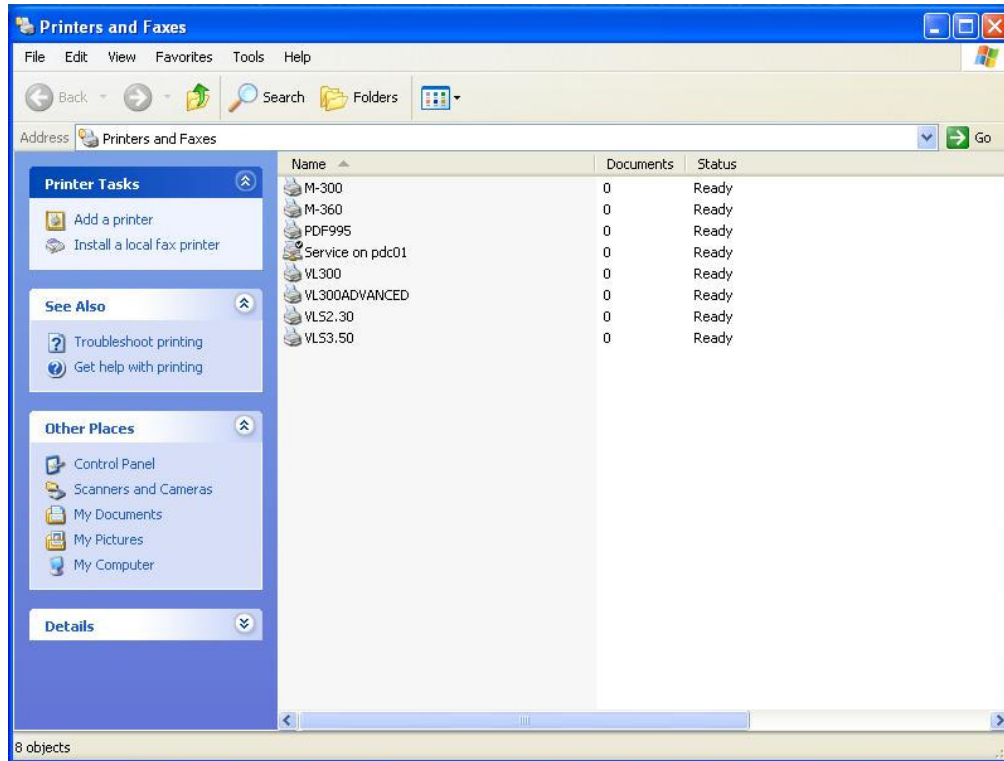
Step 5 – After the extraction wizard closes, the extracted folder - **WinXP_Vista_Pro Series** - appears on your desktop. This is the folder that you will shortly be navigating to for the driver installation file.



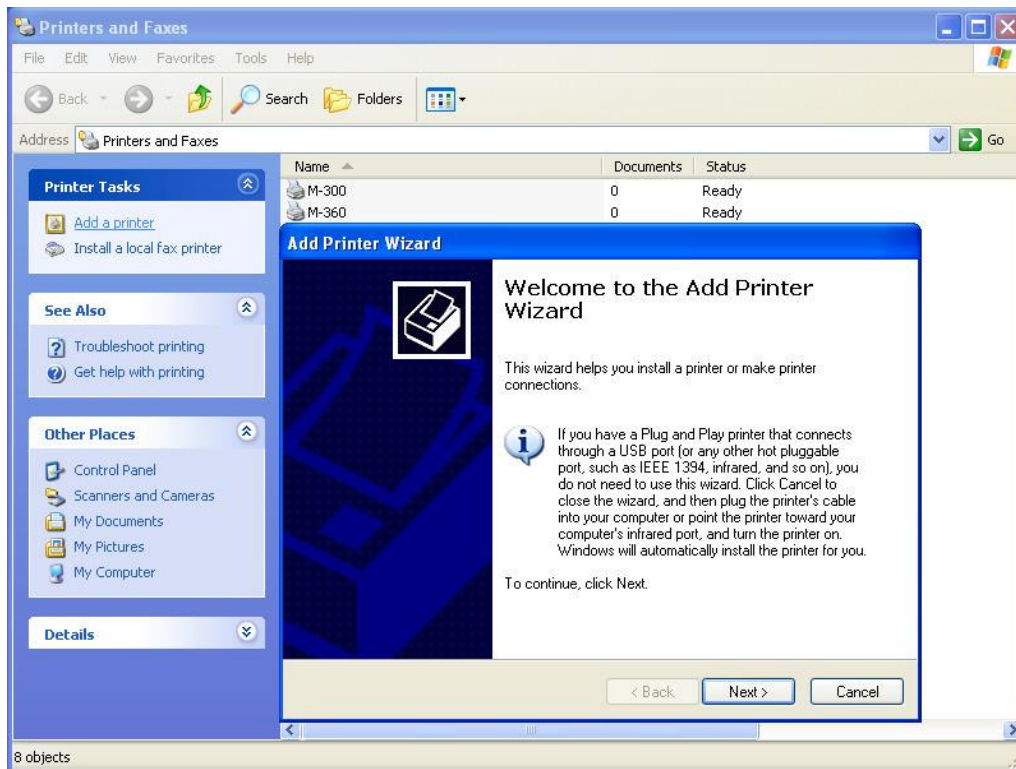
Step 6 – Open your printers folder:



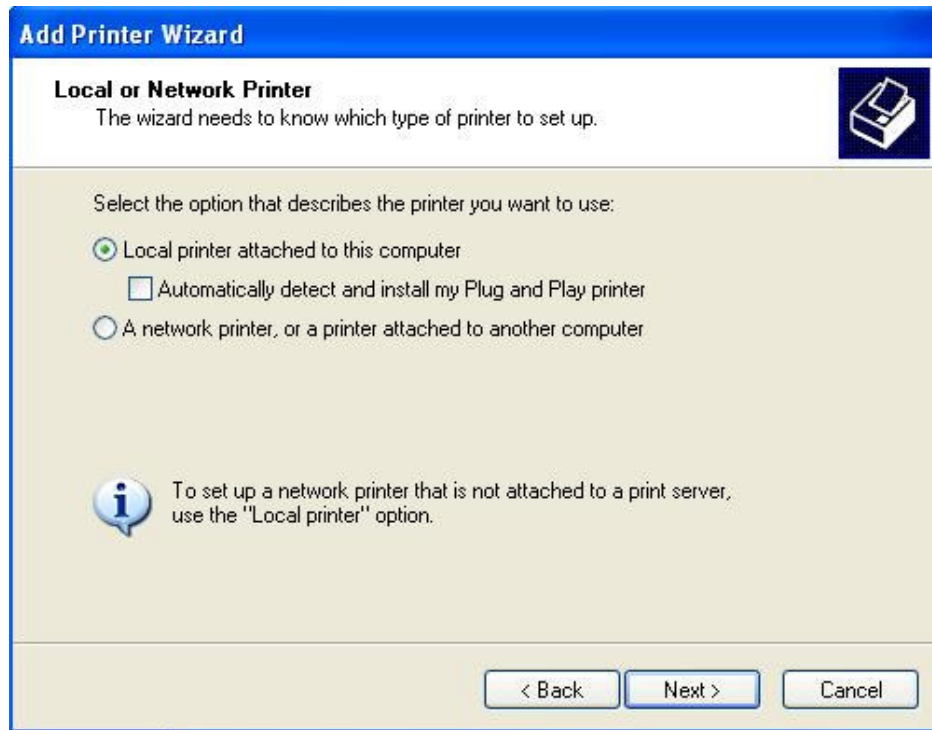
Step 7 – The printers folder opens:



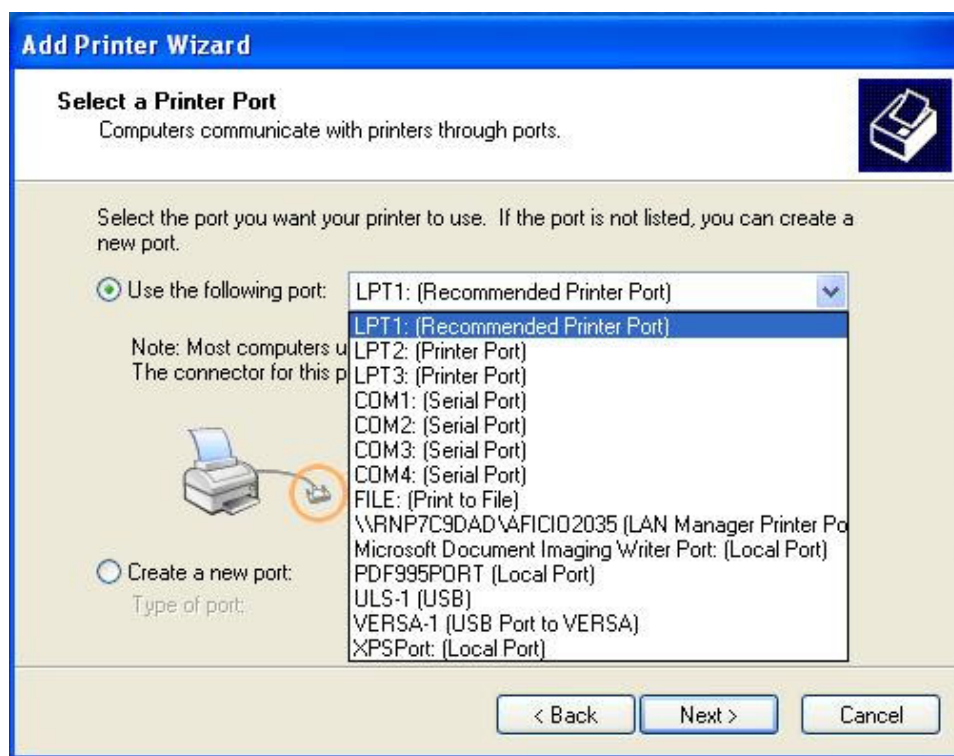
Step 8 – Start the Add Printer Wizard by clicking on the **Add a Printer** link to the left and click **Next**:



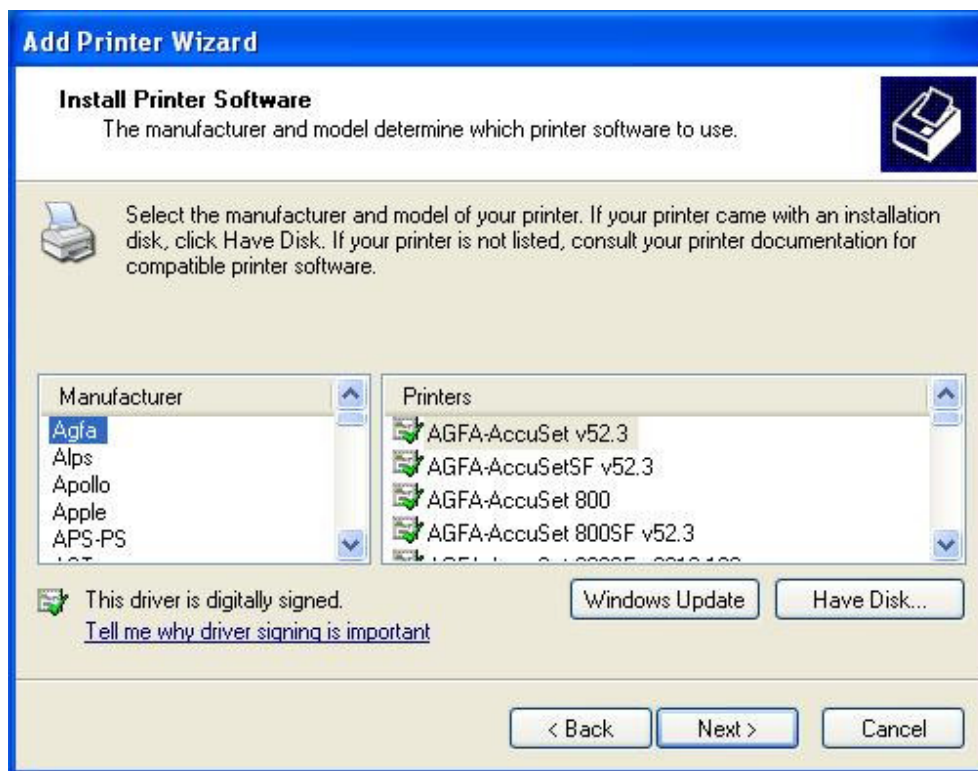
Step 9 – Follow the steps of the printer wizard. Select **Local printer attached to this computer** and make sure that **Automatically detect and install my Plug and Play printer** is unchecked and click **Next**:



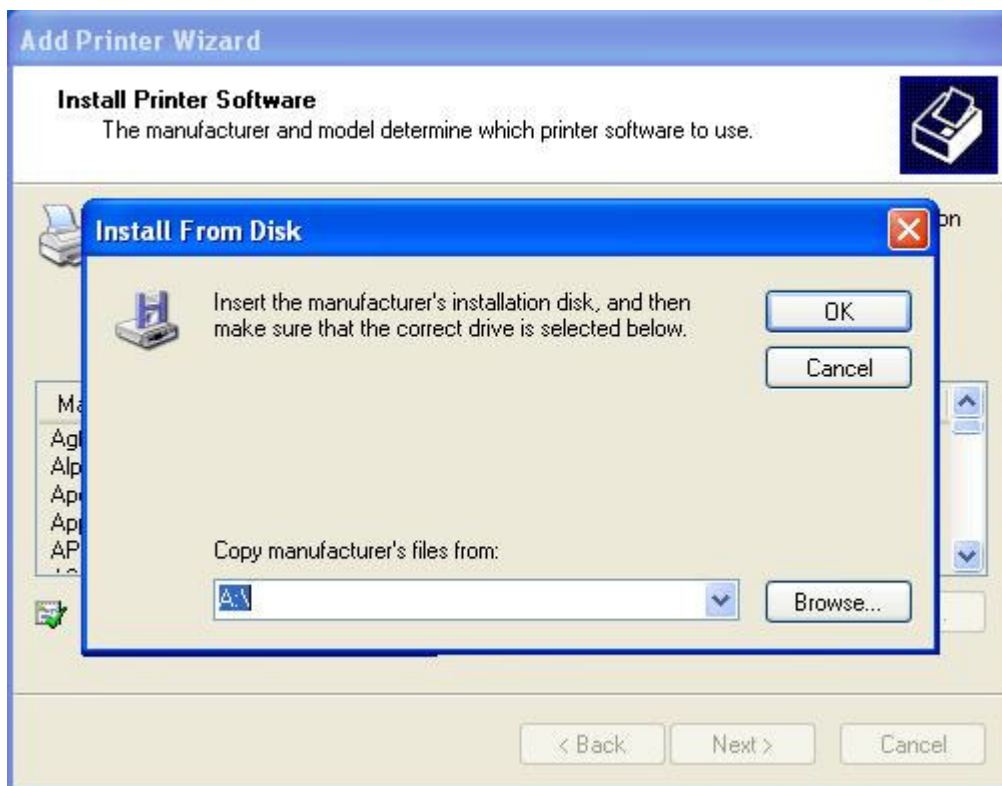
Step 10 – Select Use the following port and select the correct port for your installation. If you are using a USB cable out of the back of your computer to your engraver, then select **ULS-1 (USB)** or other applicable USB port. Select USB even if you are using a USB (computer side) to Parallel (engraver side) conversion cable. If you are connecting to the engraver by a parallel to parallel cable then select **LPT1** and click **Next**:

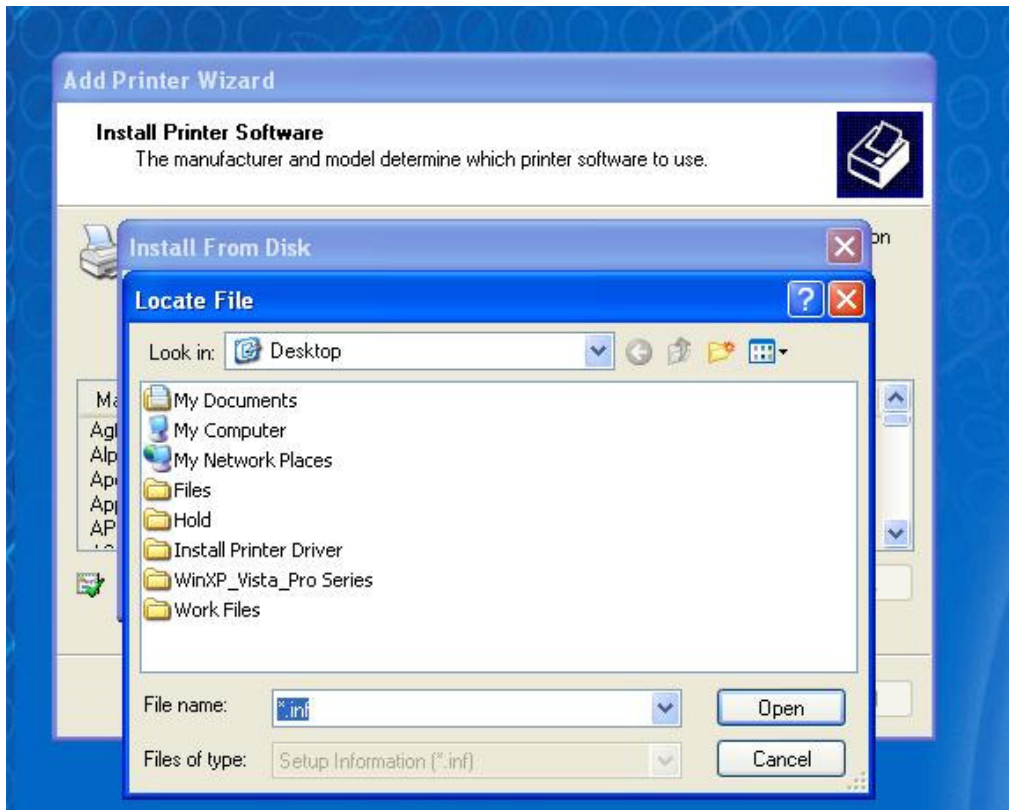


Step 11 – The **Install Printer Software** dialog box opens. Select the **Have Disk...** button:

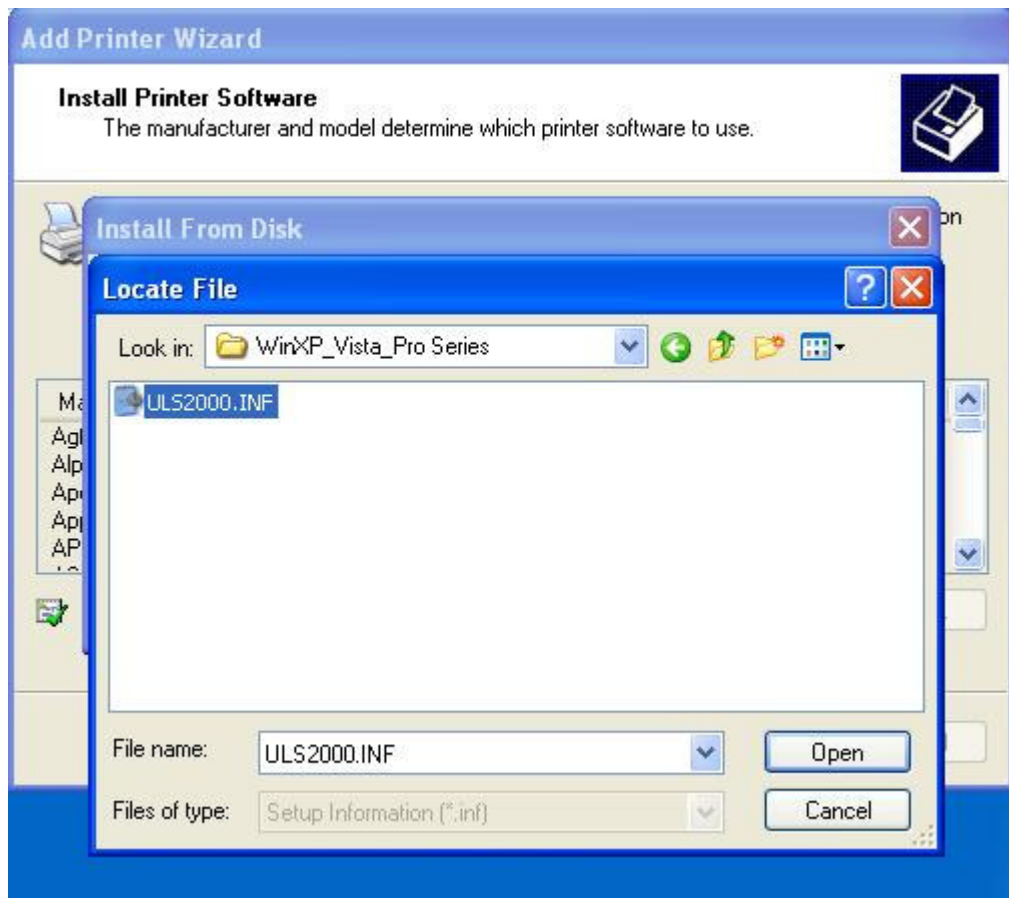


Step 12 – The **Install From Disk** window opens. Click the **Browse** button and navigate to the **WinXP_Vista_Pro Series** folder on your desktop:

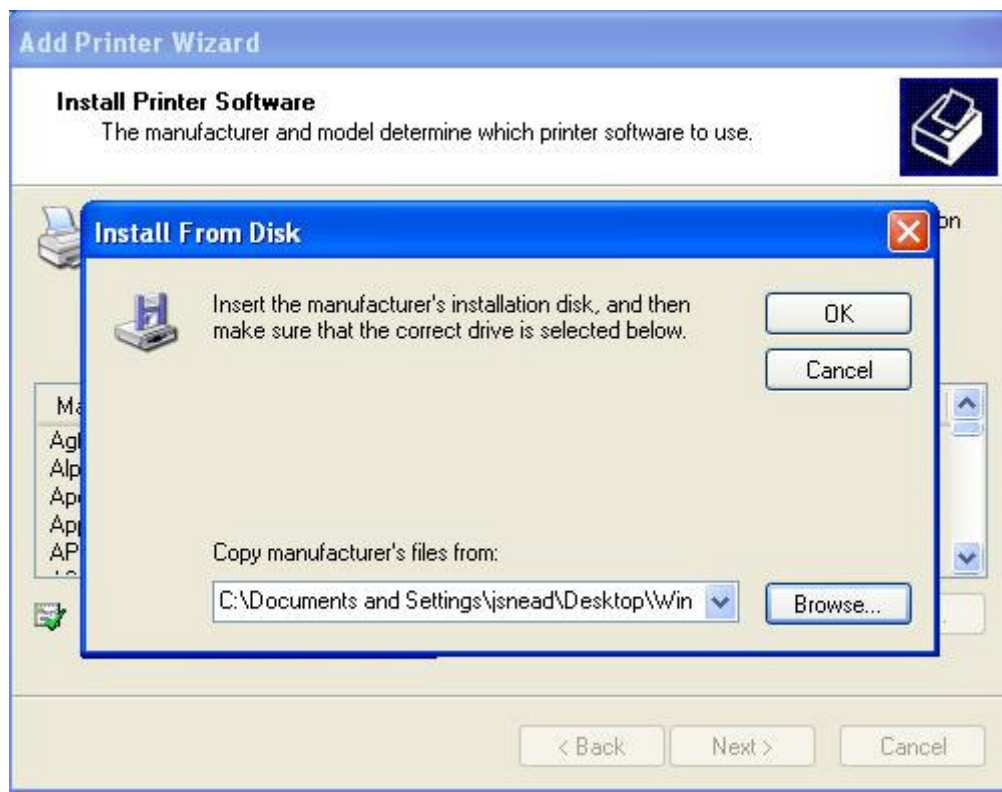




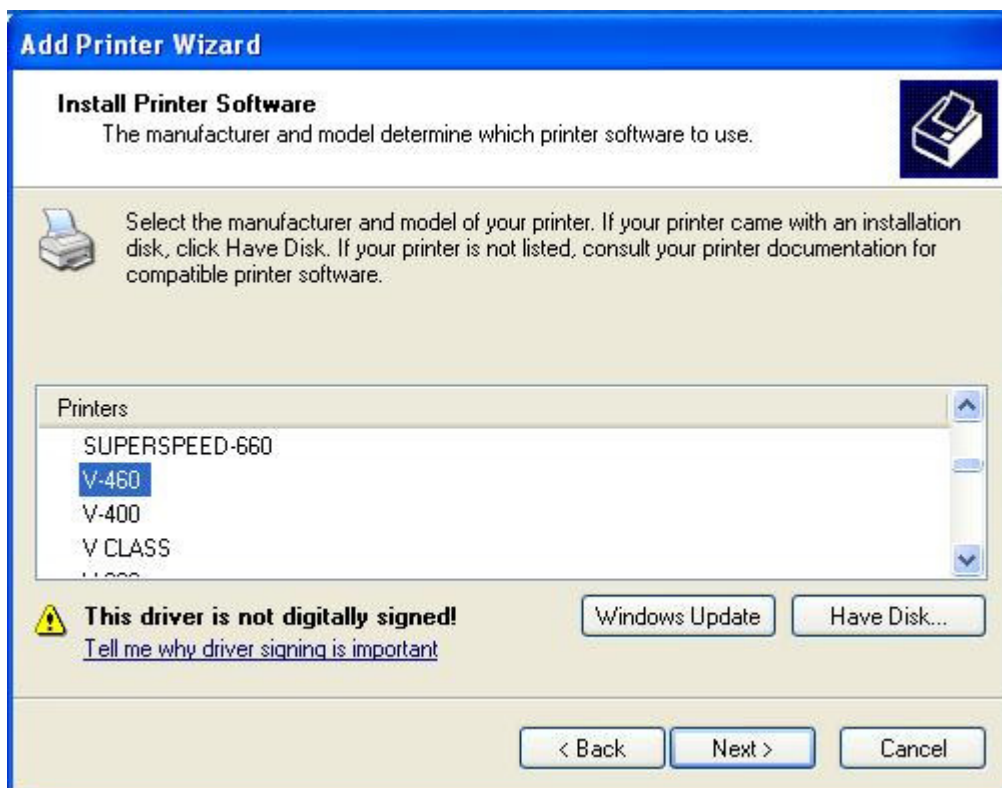
Step 13 – Once inside the **WinXP_Vista_Pro Series** folder, select the **ULS2000.INF** file and click **Open**.



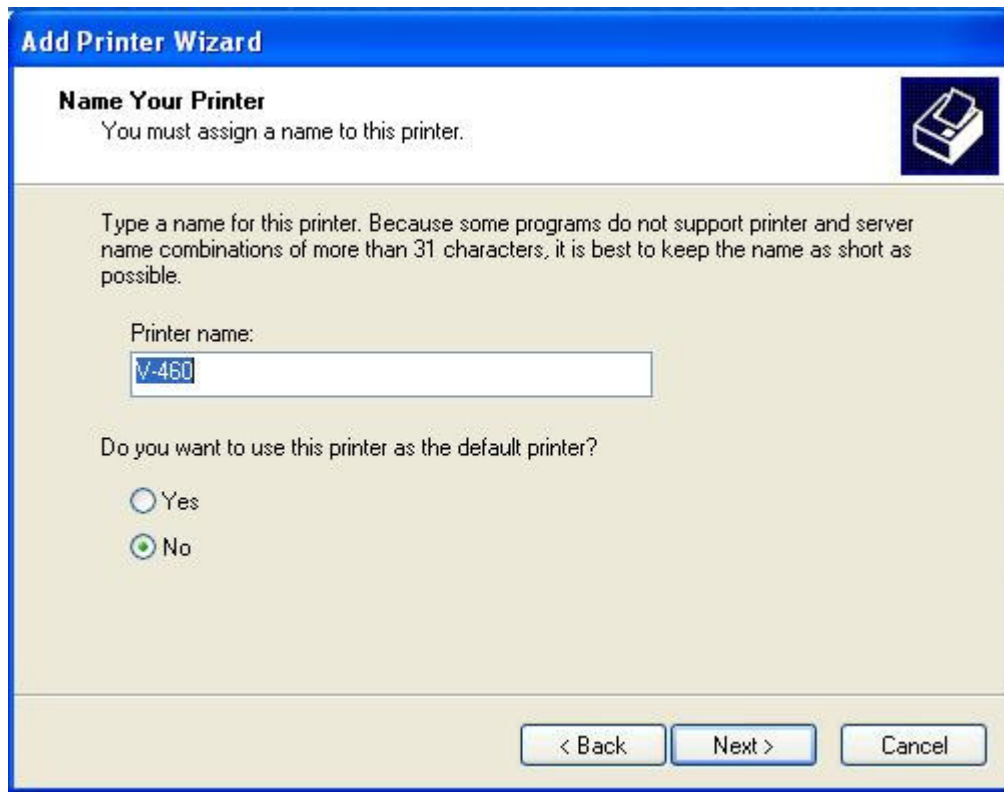
Step 14 – Click Ok on the **Install From Disk** dialog box:



Step 15 – Select the model engraver that you wish to install a driver for; in this case, I have selected the **V-460** driver to be installed. Click the **Next** button to continue:

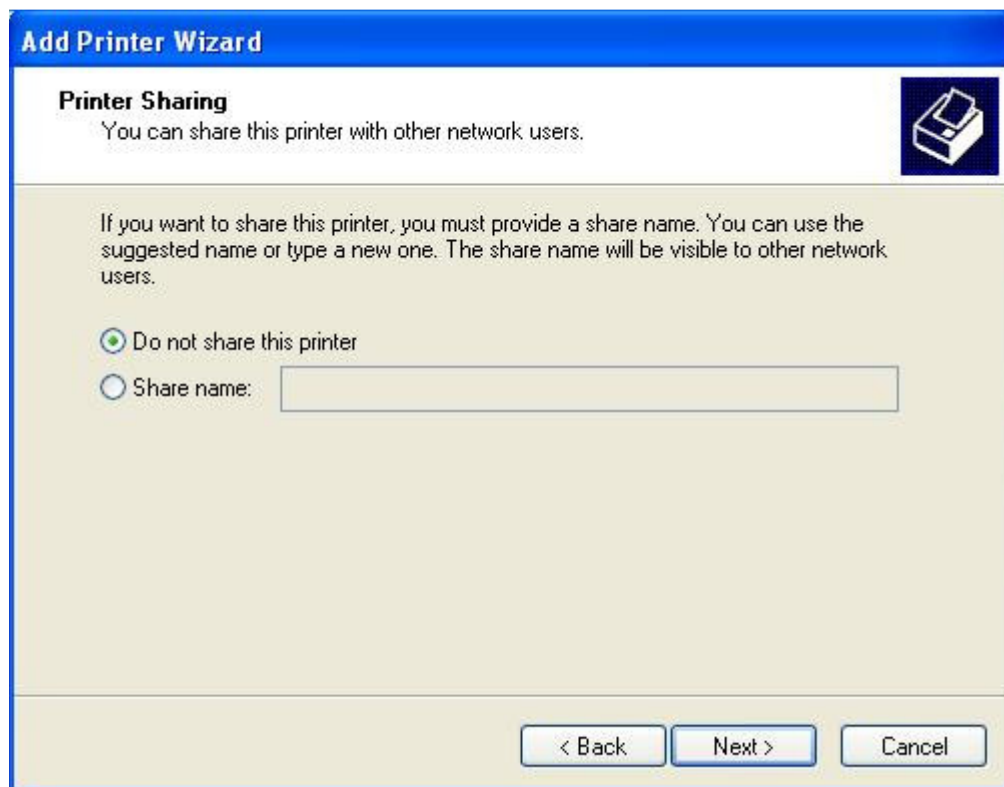


Step 16 – The following window appears. Verify that the printer name is the model of engraver that you selected in the last step. If you want this as the default printer then click **Yes**; otherwise click **No**. Click **Next** to continue the installation:



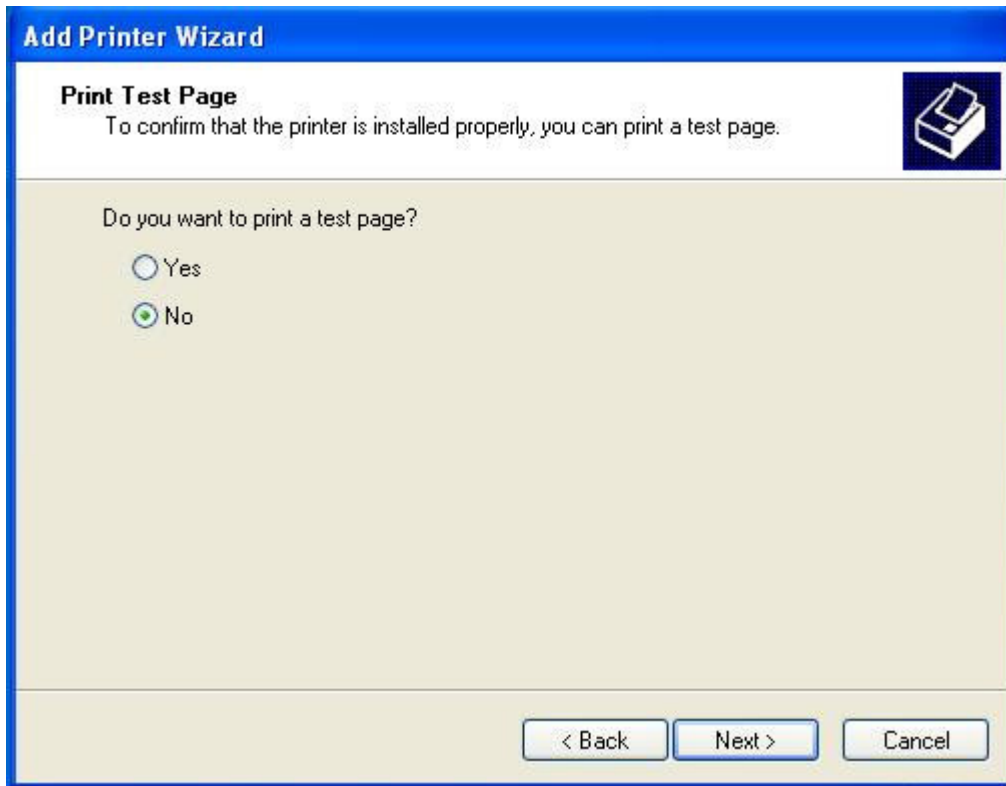
The screenshot shows the 'Add Printer Wizard' window with the title 'Add Printer Wizard'. The main heading is 'Name Your Printer' with a sub-heading 'You must assign a name to this printer.' and a printer icon. The text below reads: 'Type a name for this printer. Because some programs do not support printer and server name combinations of more than 31 characters, it is best to keep the name as short as possible.' There is a text box labeled 'Printer name:' containing the text 'V-460'. Below this is the question 'Do you want to use this printer as the default printer?' with two radio buttons: 'Yes' (unselected) and 'No' (selected). At the bottom are three buttons: '< Back', 'Next >', and 'Cancel'.

Step 17 – The following window appears. Click **Do not share this printer** and click **Next** to continue the installation:

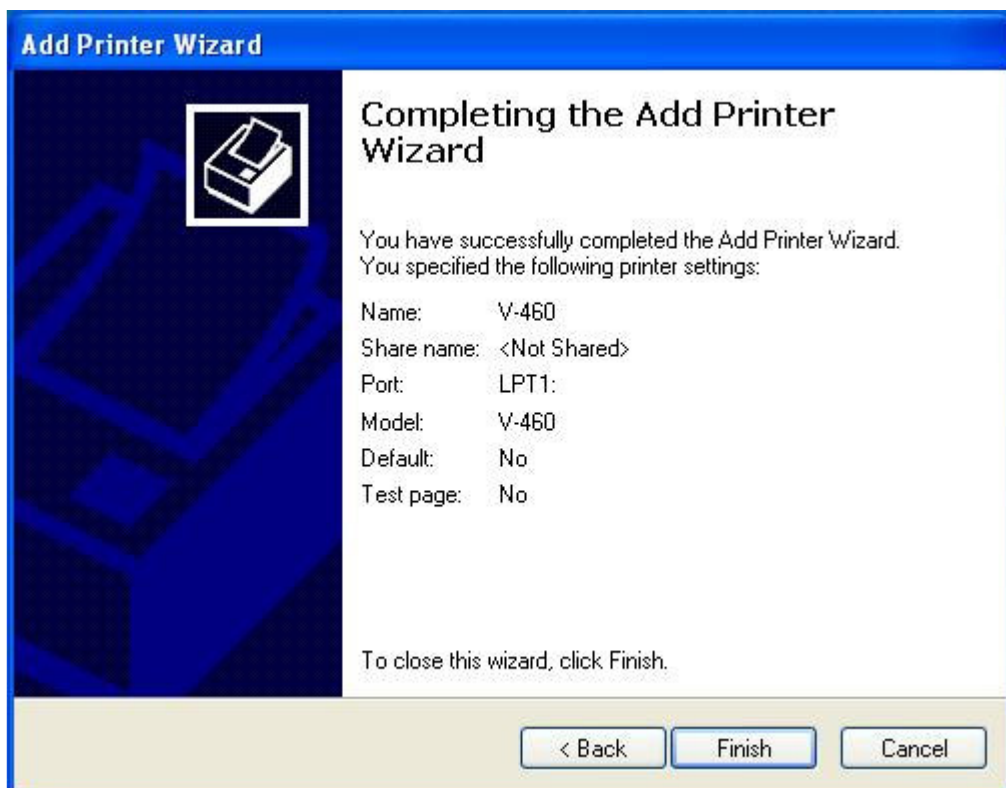


The screenshot shows the 'Add Printer Wizard' window with the title 'Add Printer Wizard'. The main heading is 'Printer Sharing' with a sub-heading 'You can share this printer with other network users.' and a printer icon. The text below reads: 'If you want to share this printer, you must provide a share name. You can use the suggested name or type a new one. The share name will be visible to other network users.' There are two radio buttons: 'Do not share this printer' (selected) and 'Share name:' (unselected) followed by an empty text box. At the bottom are three buttons: '< Back', 'Next >', and 'Cancel'.

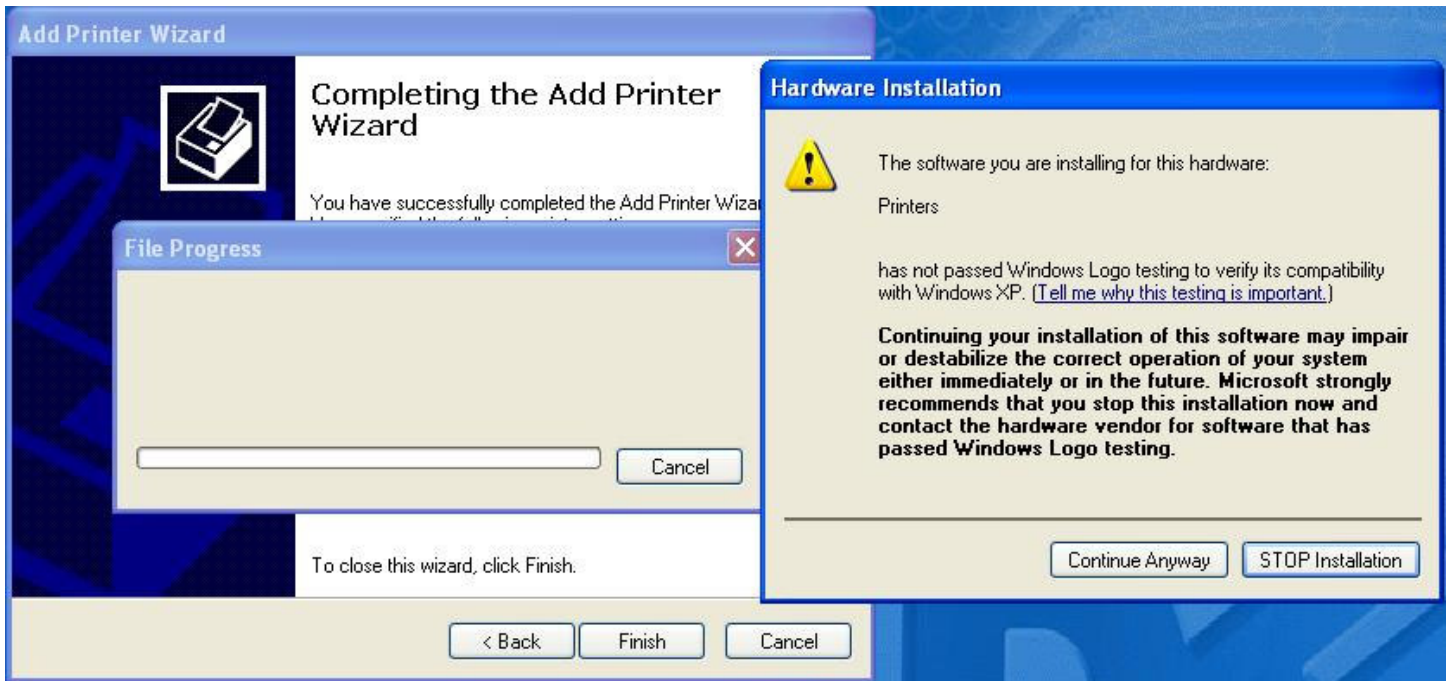
Step 18 – The following window appears. Click **No** for **Do you want to print a test page** and click **Next** to continue the installation:



Step 19 – The following window appears. Click **Finish** to complete the installation:



Step 20 – The following appears. The File Progress boxes will close on their own after file transfers are complete; usually in less than a minute. The Hardware Installation dialog box appears as well stating that this software has not passed Windows Logo testing. Click **Continue Anyway** and the installation will be complete; all open dialog boxes on the desktop will now close by themselves:



Step 21 – Open the printers and faxes folder to verify that the new printer driver has been successfully installed. The installation is now complete:

