

Purpose: These instructions will show how to configure any Networked Computer to be able to send files to the Host Computer (the computer that is connected to the actual system). The Networked Computer will not be able to start the system, only the Host Computer will be able to start and run files.

NOTICE

1) These instructions assume that the UCP Software has been installed on both Host Computer and any computers that will be networked to the Host Computer. If not, please follow UCP Software installation instructions in your User Manual that came with the system. If you do not have a copy of the UCP Software, then it is available for free online at the link below*. These instructions also assume that you do have a general understanding of the UCP Software. Do not attempt to network multiple systems without the basic understanding of the UCP Software first to avoid any confusion.

2) It is a good idea to test the Networked Computer(s) with the Host System after loading the UCP Software by directly connecting to it. This will ensure that the Graphic and UCP Software was correctly loaded and functional.

3) These instructions are written for Windows Software 8 and above. Since all networks are configured differently, you may need to contact your IT department to assist you in this procedure.

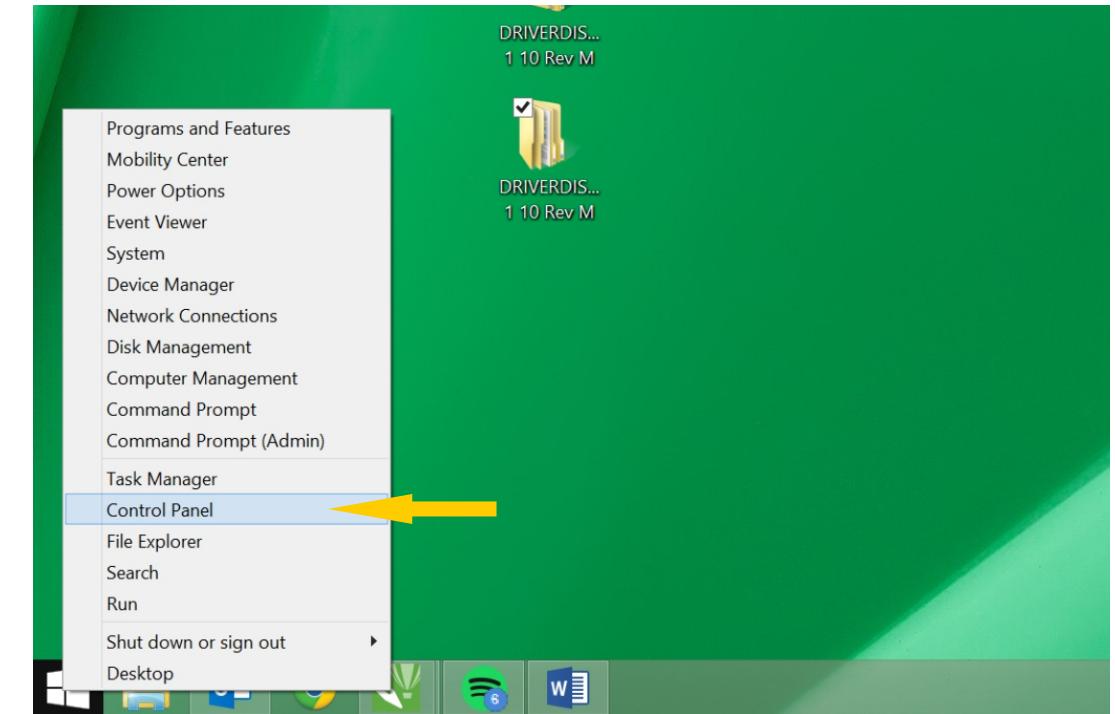
4) The model **VLS3.60** will be used in these instructions as an example to set up both the Host and Networking Computer. If another model system is owned just replace the VLS3.60 model in the instruction with the applicable model.

5) We are using CorelDraw X7 for our examples. You can use any Vector based Graphics Program. All Graphics Software should be pre-setup correctly for outputting to the laser systems. If you are unsure if your Graphic Software is setup correctly please visit the link below† or call your ULS Support Team @ 480-609-0297 for assistance.

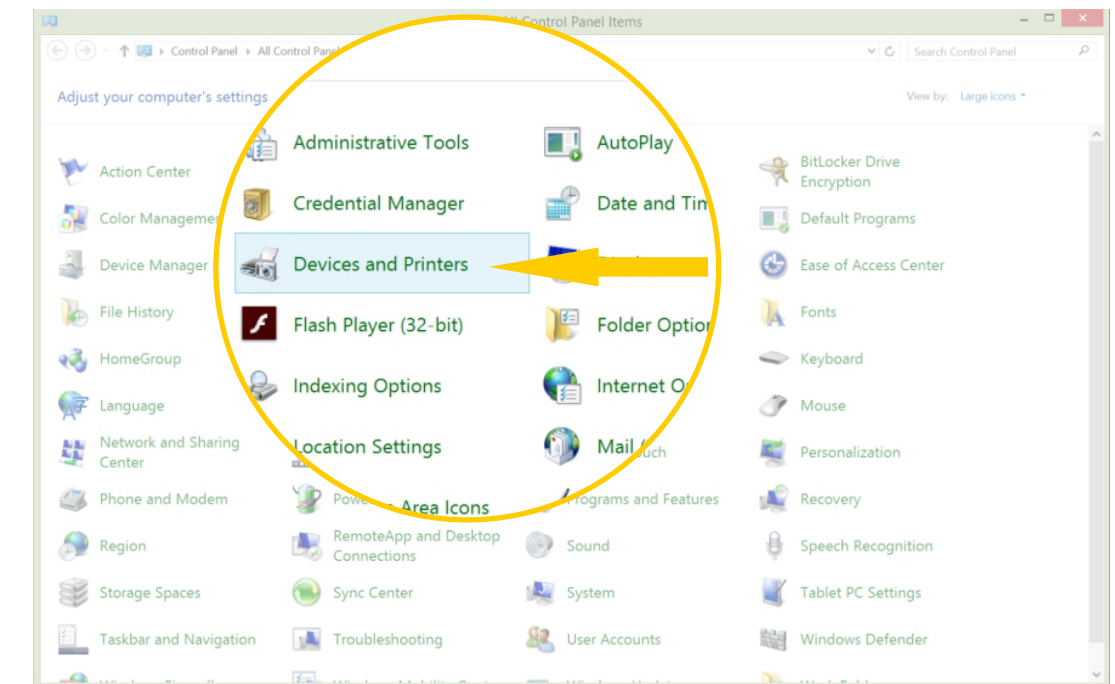
*ULS Website Drivers Link - <http://www.ulsinc.com/downloads/>

†ULS FTP Link - [http://63.253.136.155/support/Graphic%20Software%20Files%20\(Corel,%20Illustrator,%20AutoCAD\)/](http://63.253.136.155/support/Graphic%20Software%20Files%20(Corel,%20Illustrator,%20AutoCAD)/)

Step 1
Right Click the Windows Icon in the lower left hand corner and Select **Control Panel**.

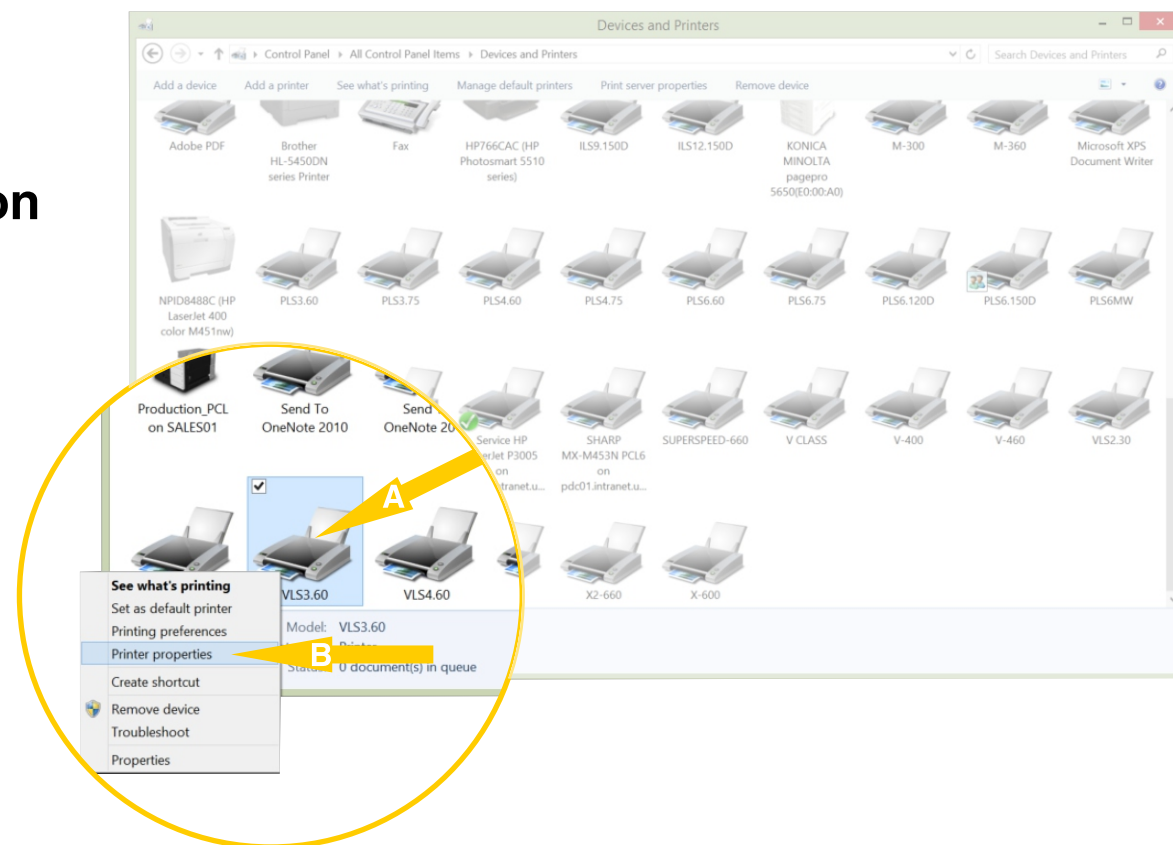


Step 2
Select Devices and Printers.



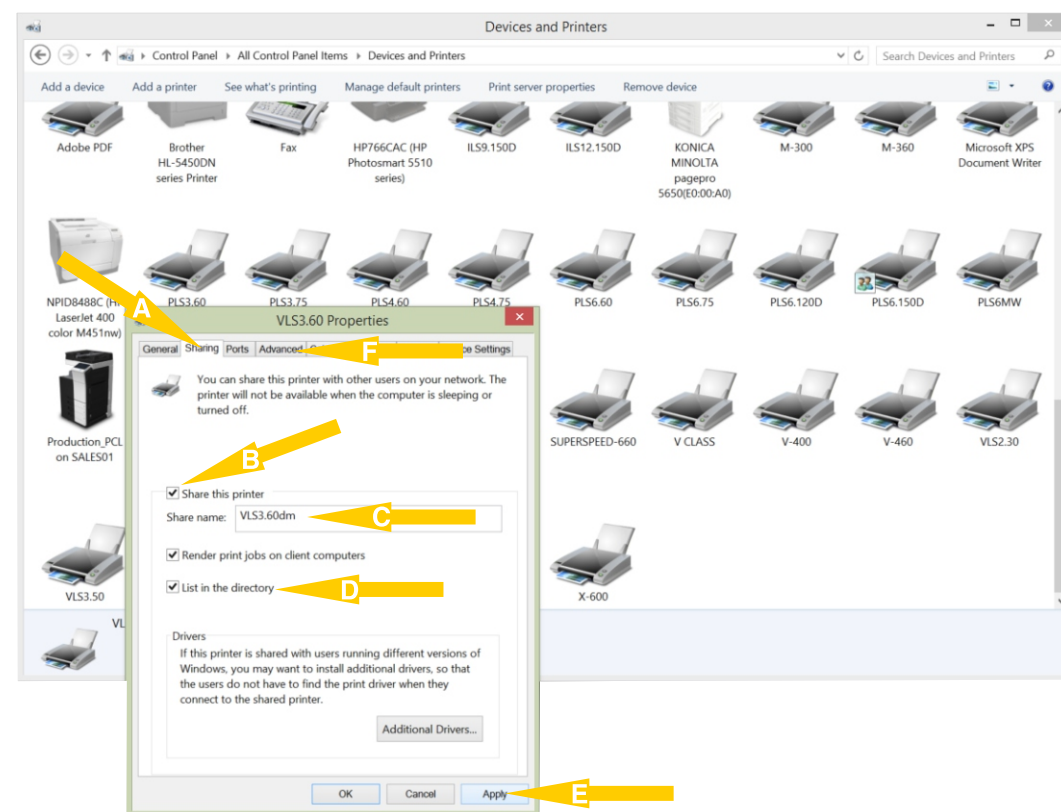
Step 3

A Right Click the **Appropriate Printer Icon** and **B** Select **Printer properties**.



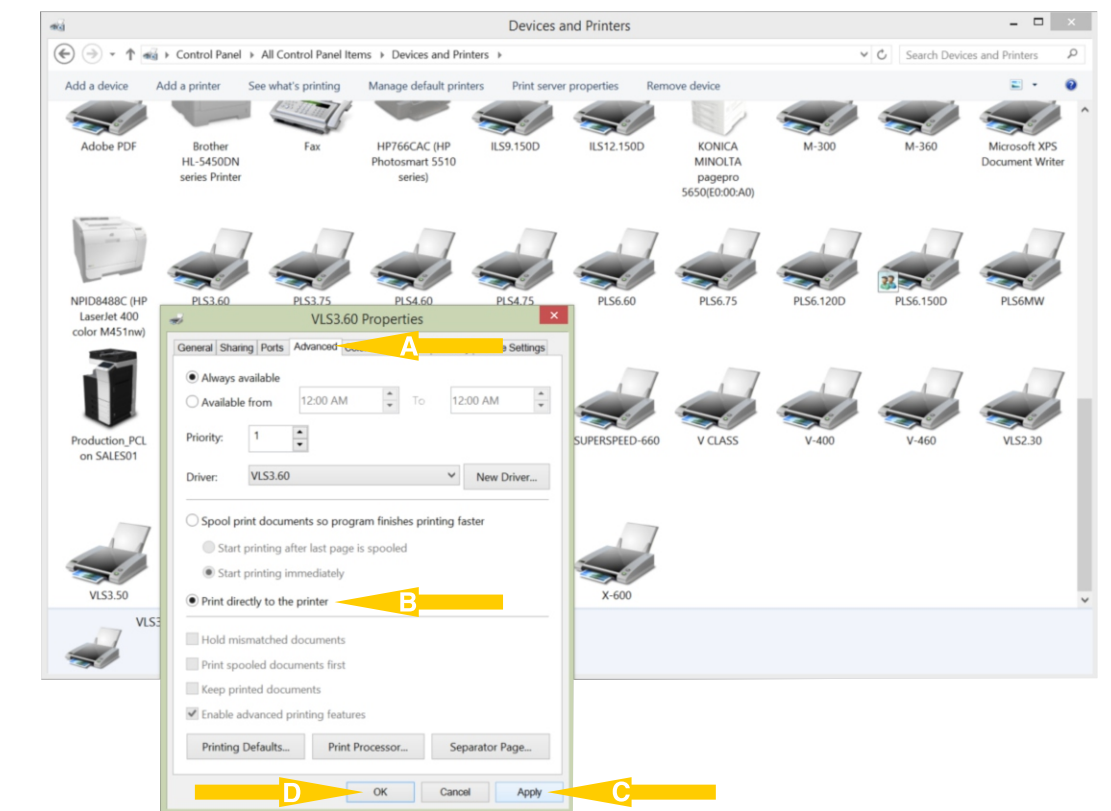
Step 4

The VLS3.60 Properties window will appear. Select the **A Sharing** tab. Check mark **B Share this printer** and adjust the **C Share name**. Check mark **D List in the directory**. Select **E Apply**. Select the **F Advanced** tab.



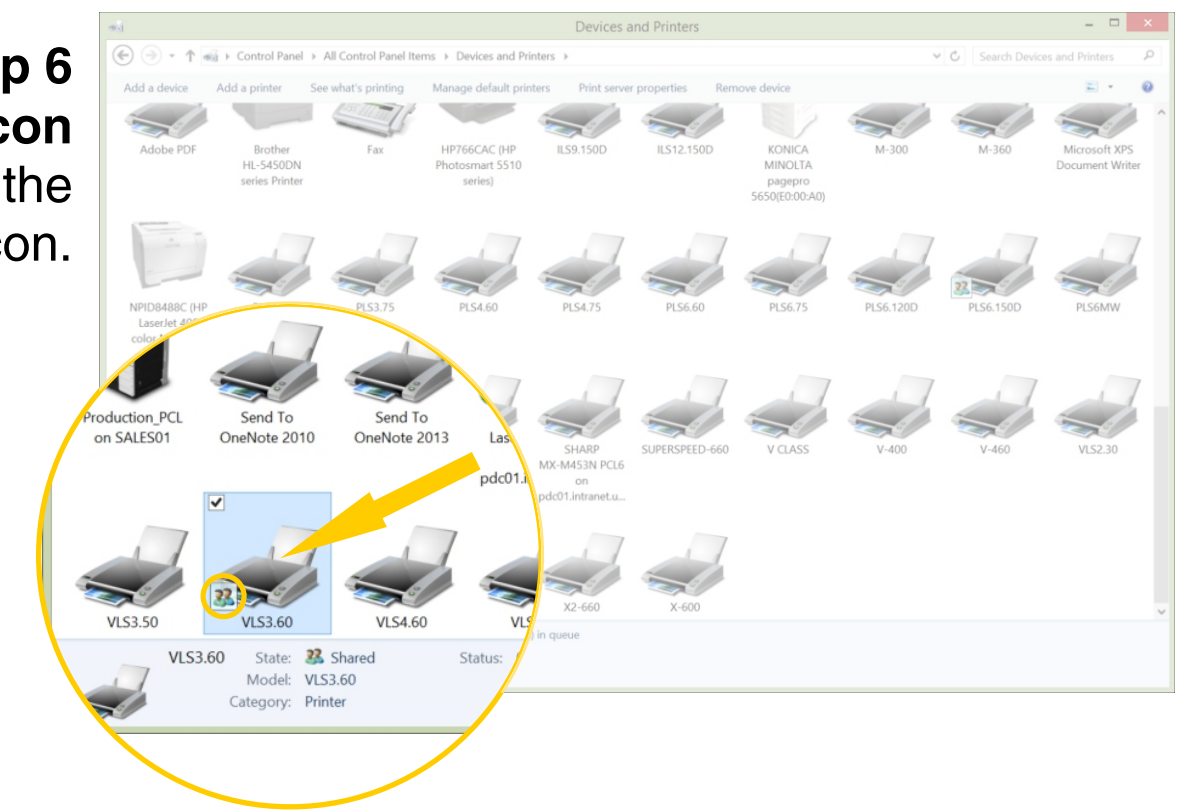
Step 5

When in the **A Advanced** tab has appeared Select **B Print directly to the printer**. Select **C Apply** and then **D Ok**.

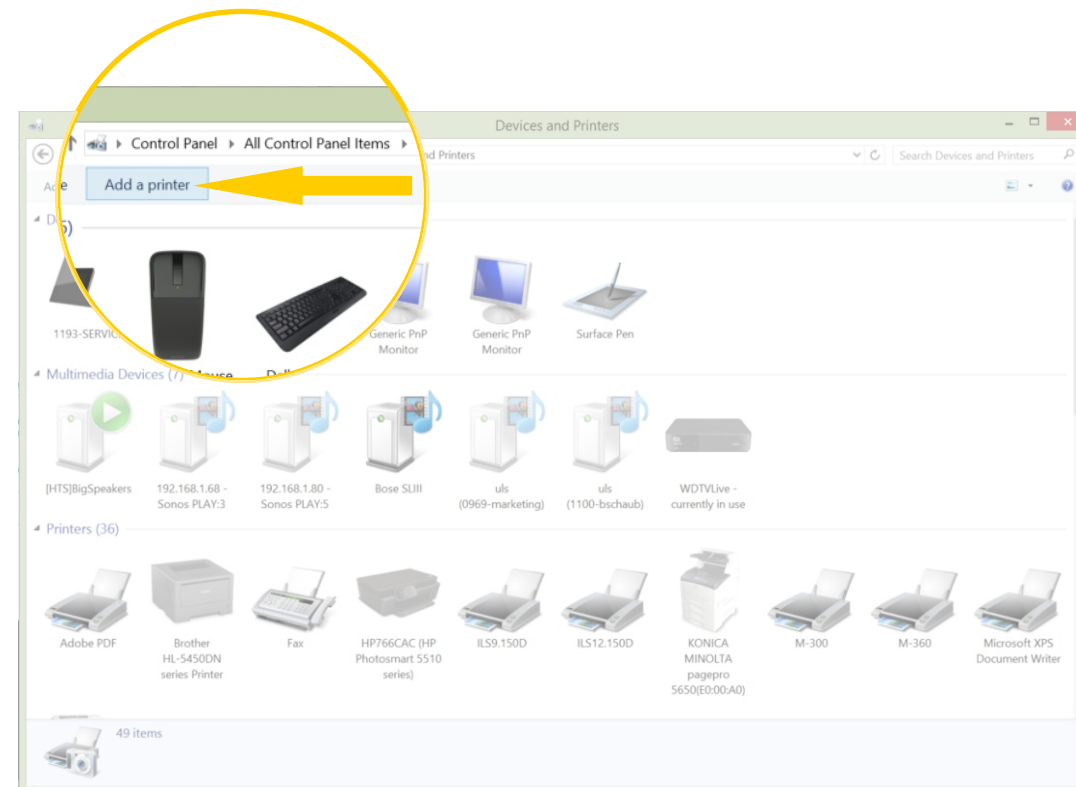


Step 6

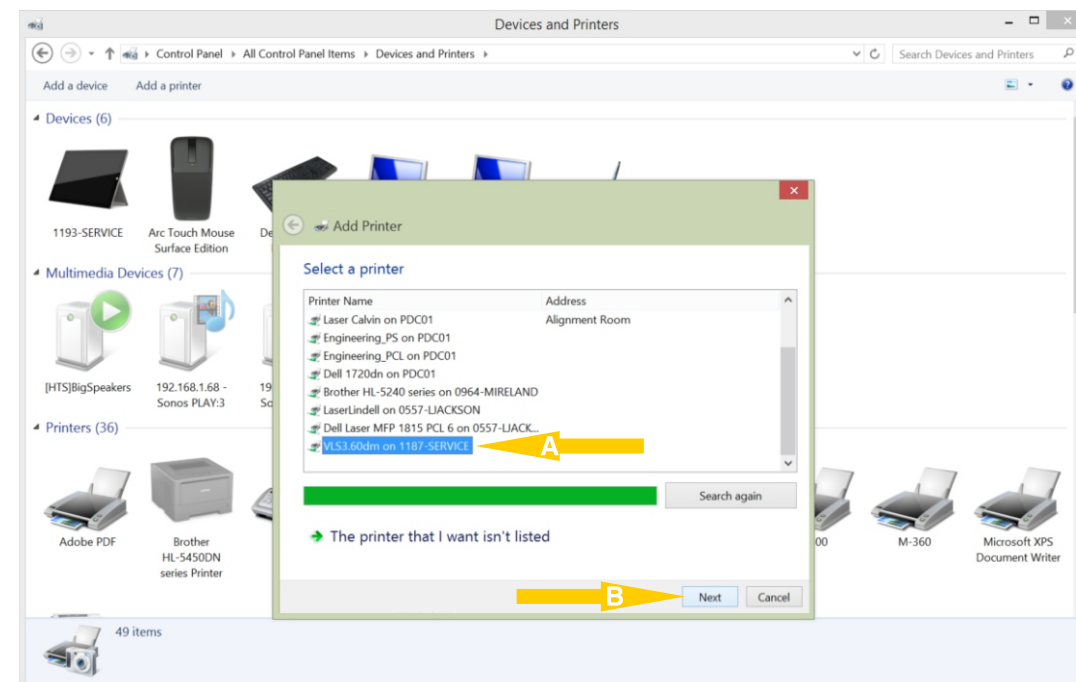
Make sure the **Shared Icon** is attached to the appropriate Printer Icon.



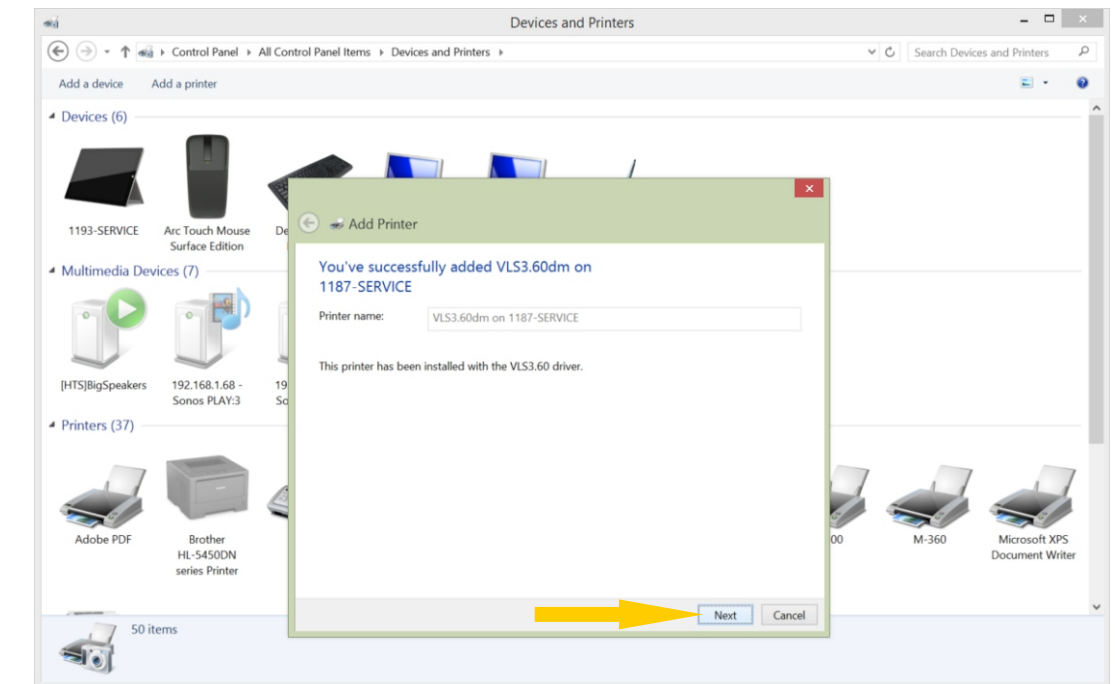
Step 1
Follow **Steps 1&2** of the **Host Computer Instructions**. Select **Add a printer**.



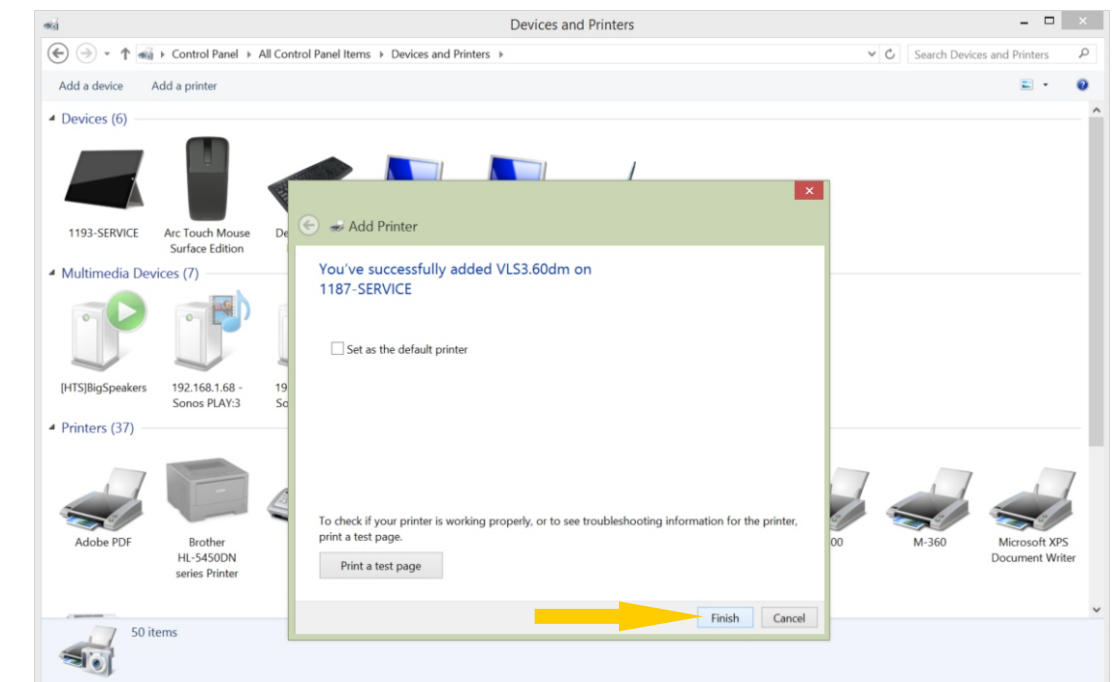
Step 2
Select the **A Networked Printer** in this case the **VLS3.60dm** and then **B Next**. If it does not show up on the list then go back through and double check all the settings of the Host Computer.



Step 3
You will be prompted with a successfully added screen. Select **Next**.

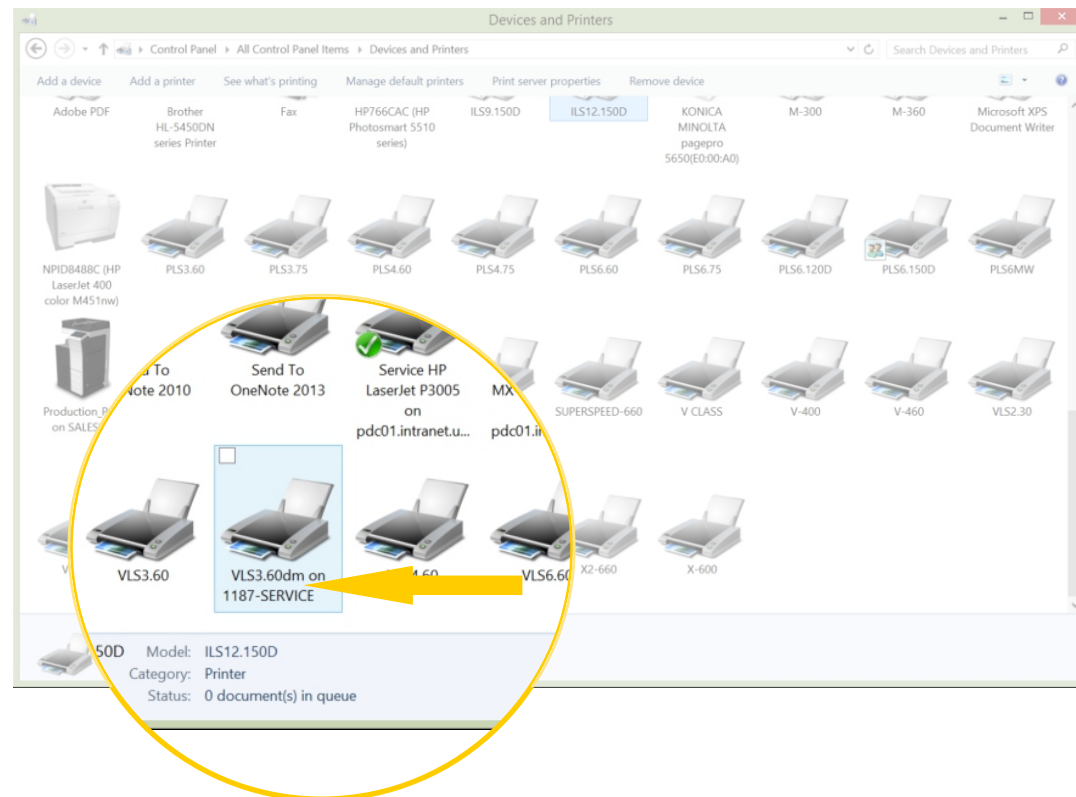


Step 4
Select **Finish**.



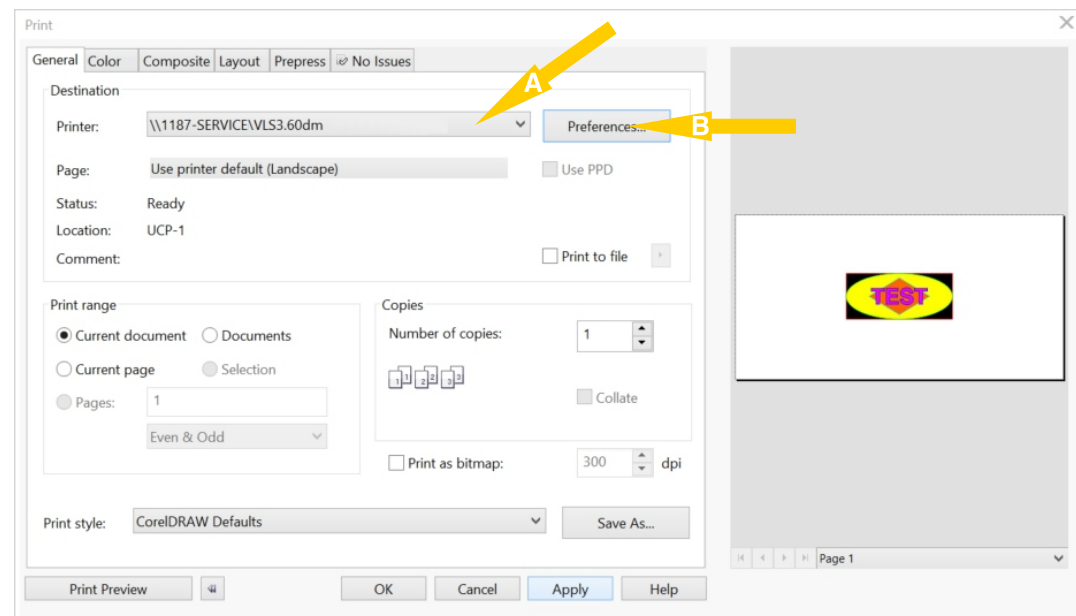
Step 5

Ensure that **Networked Printer Icon** is shown in **Devices and Printers**. If it isn't you may need to either close the window and reopen or reboot the computer.



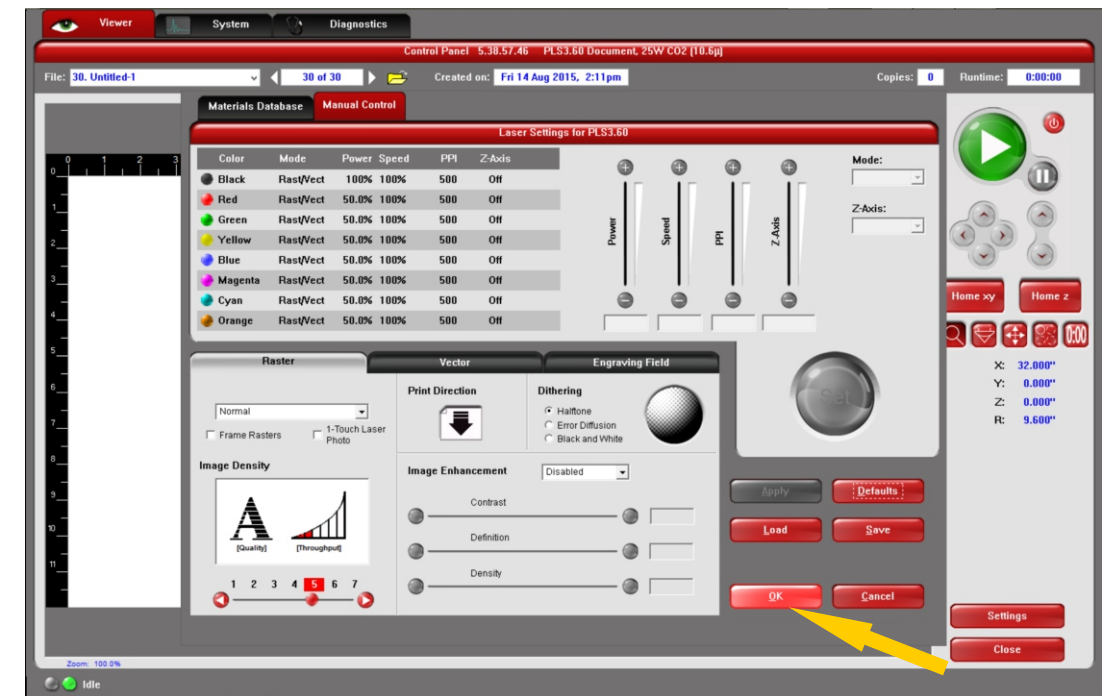
Step 6

You are now ready to send files to the Host Computer using your **Graphic Software** from your **Networked Computer**. After your design is created and ready for outputting to UCP. Go to **Print** in the **Graphic Software**. Select the **A Printer of the Host Computer** and Select **B Preferences**.



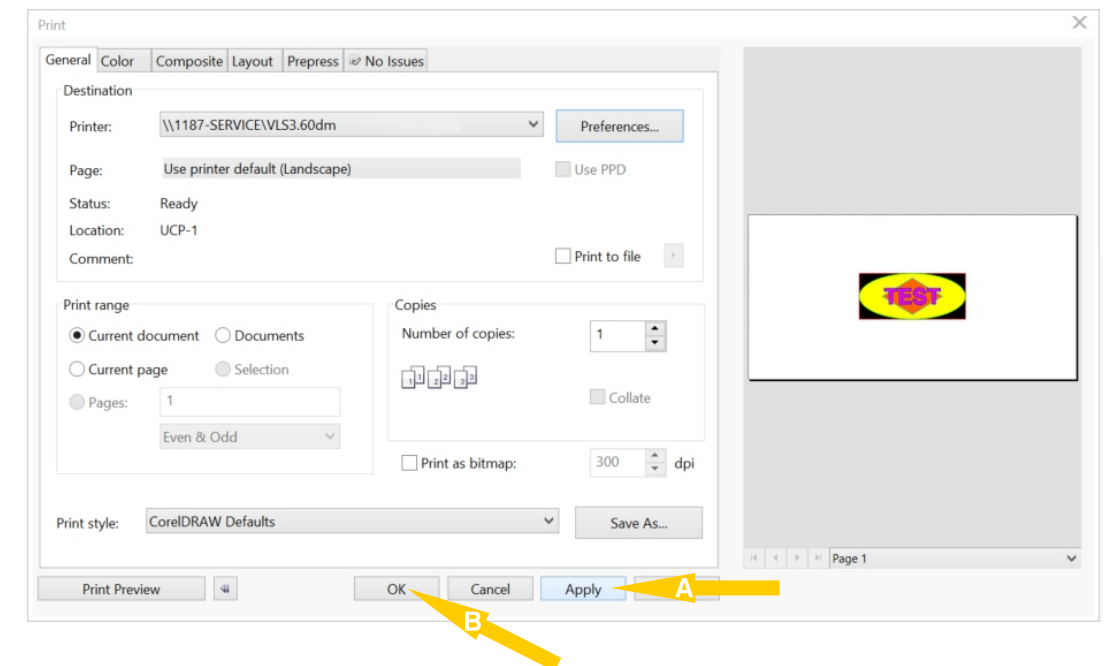
Step 7

Go to the **Manual Control** tab. If you want to use only the **Manual Settings** then do so at this time and Select **Ok**. If you plan on using the **Materials Database** it is best if changes are made from the Host Computer. The database settings will be corrupted on the Host System if you output those settings from the Networked Computer.



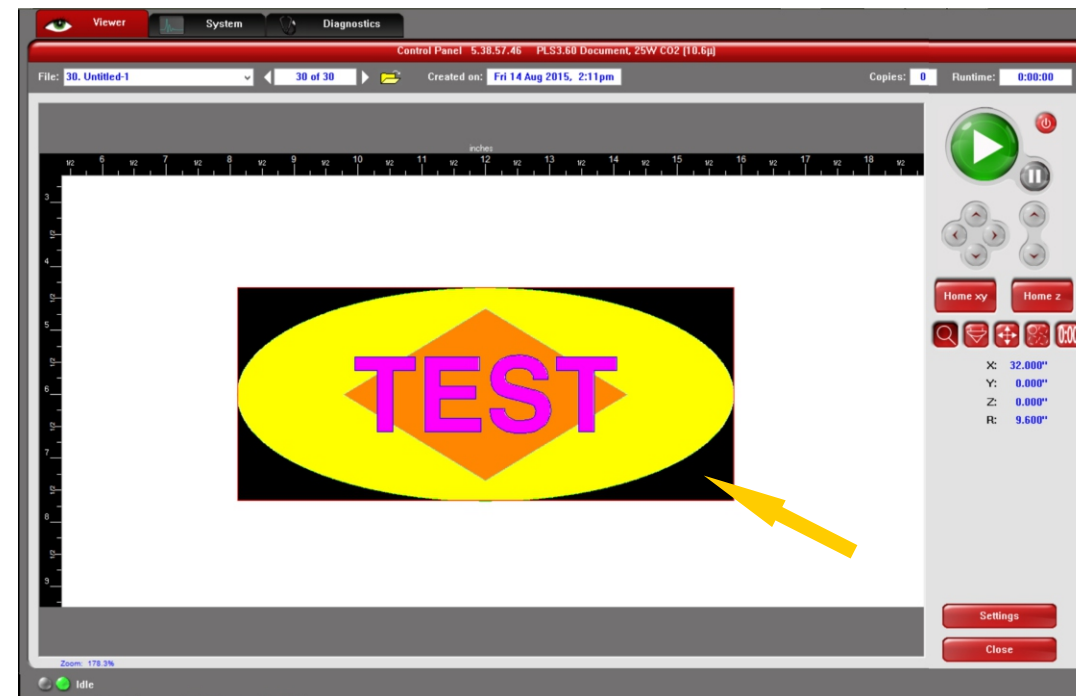
Step 9

Select **A Apply** and **B Ok**. Go to **Host Computer**.



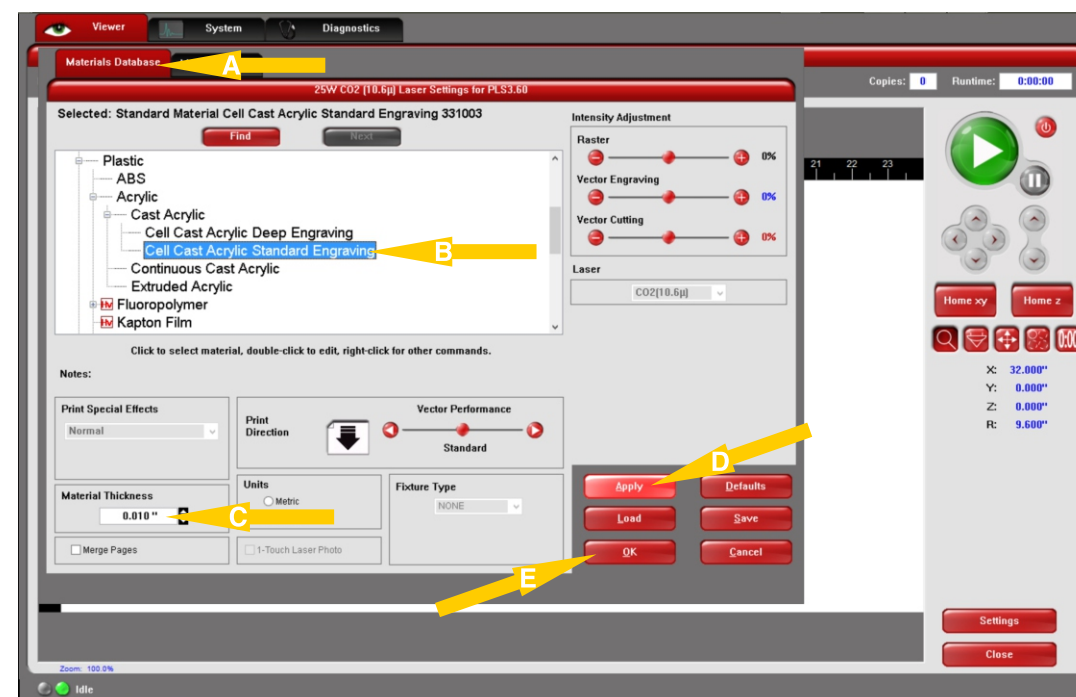
Step 1

Ensure that all applicable colors show up on the **Host Computer's UCP Viewer**. If they do not then you will need to go through previous steps to ensure that the Graphic Software and Material Settings were performed correctly.



Step 2

Using the **A Materials Database**. Select the **B Appropriate Material** and **C Thickness**. Select **D Apply** and **E Ok**. Note that some features may be disabled and are only available when outputting from Networked Computer.



Step 3

Make sure that the material is placed in the laser system and that the focus has been adjusted appropriately. Select the **Start** button on the laser system or the UCP. You have now successfully printed from a Networked Computer!

