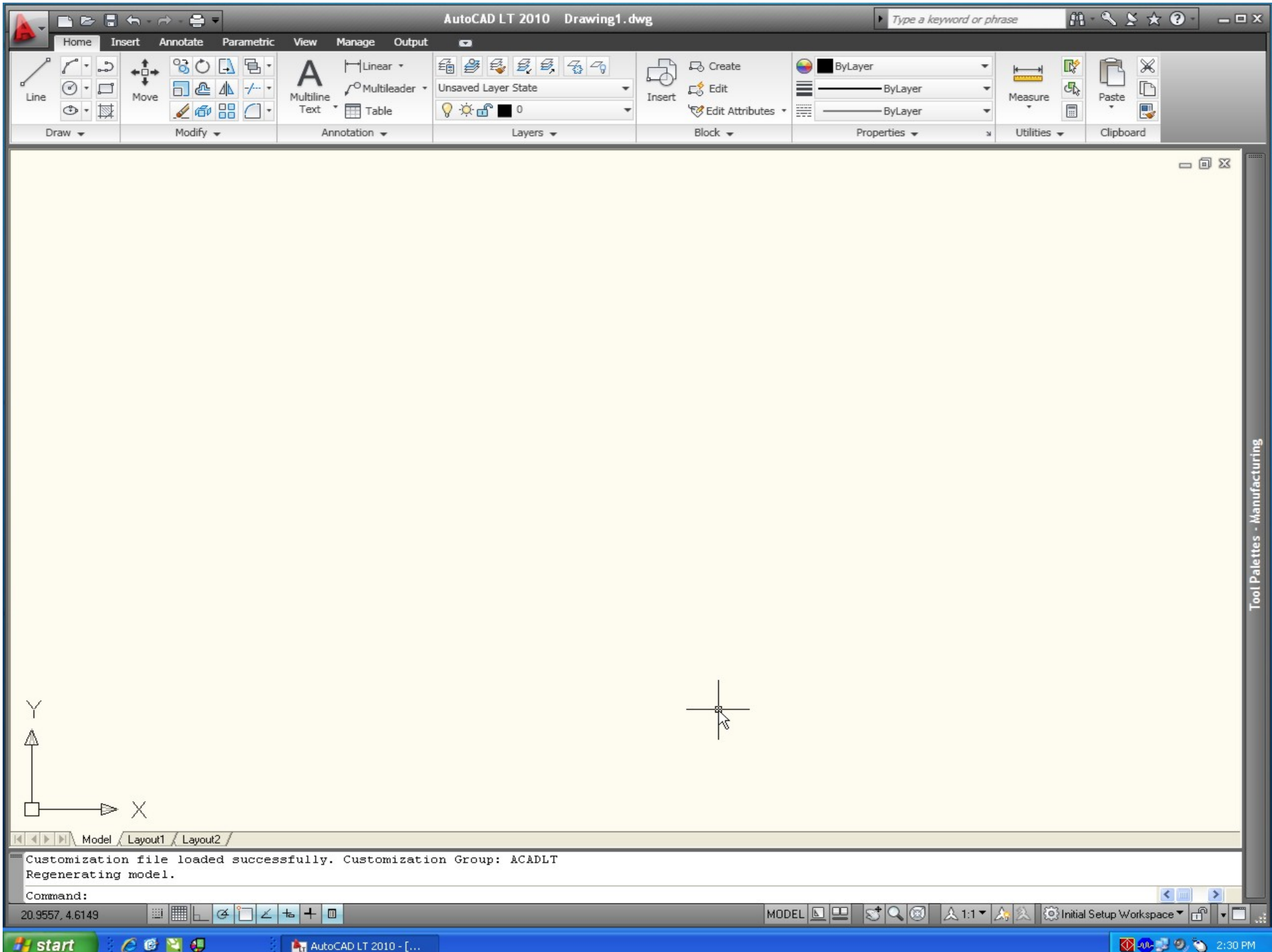


Setting Up AutoCAD

Open AutoCAD

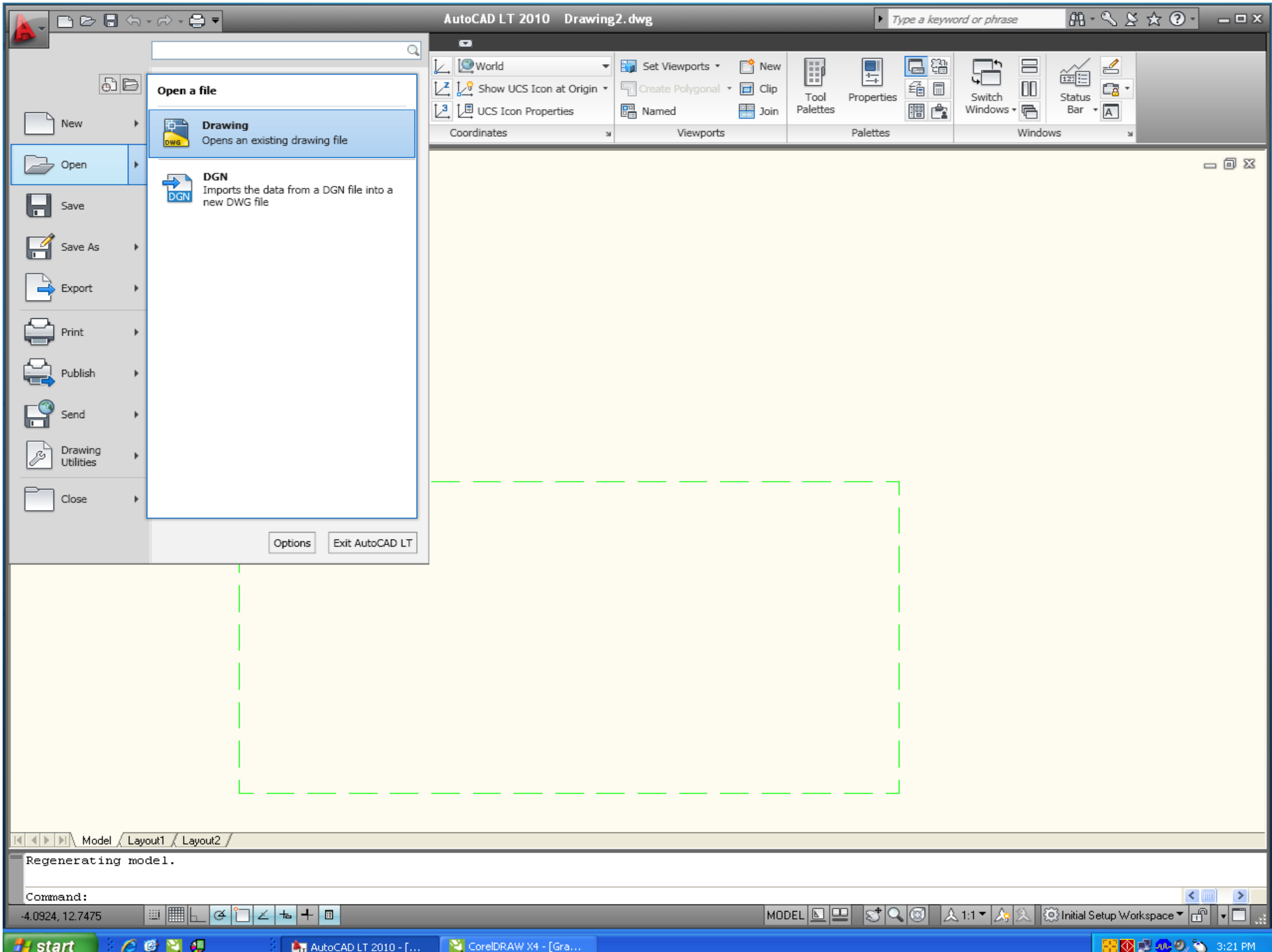
- My Documents
- laser tile light on laser tile...
- My Computer
- Larry Test Photo.bmp
- My Network Places
- UcpInst-5....
- Recycle Bin
- UCP
- Internet Explorer
- BoxMaker-PC v1.3.5
- AutoCAD 2008
- 1-Touch Laser Photo
- Graphics Files
- Focus Test Pattern.cdr
- ULS Drivers
- Autodesk Design Review
- CorelDRAW X4
- AutoCAD LT 2010
- ULS User Guide_120...
- Adobe Photosho...
- dreamstime...
- test.las
- laser tile light on laser til...

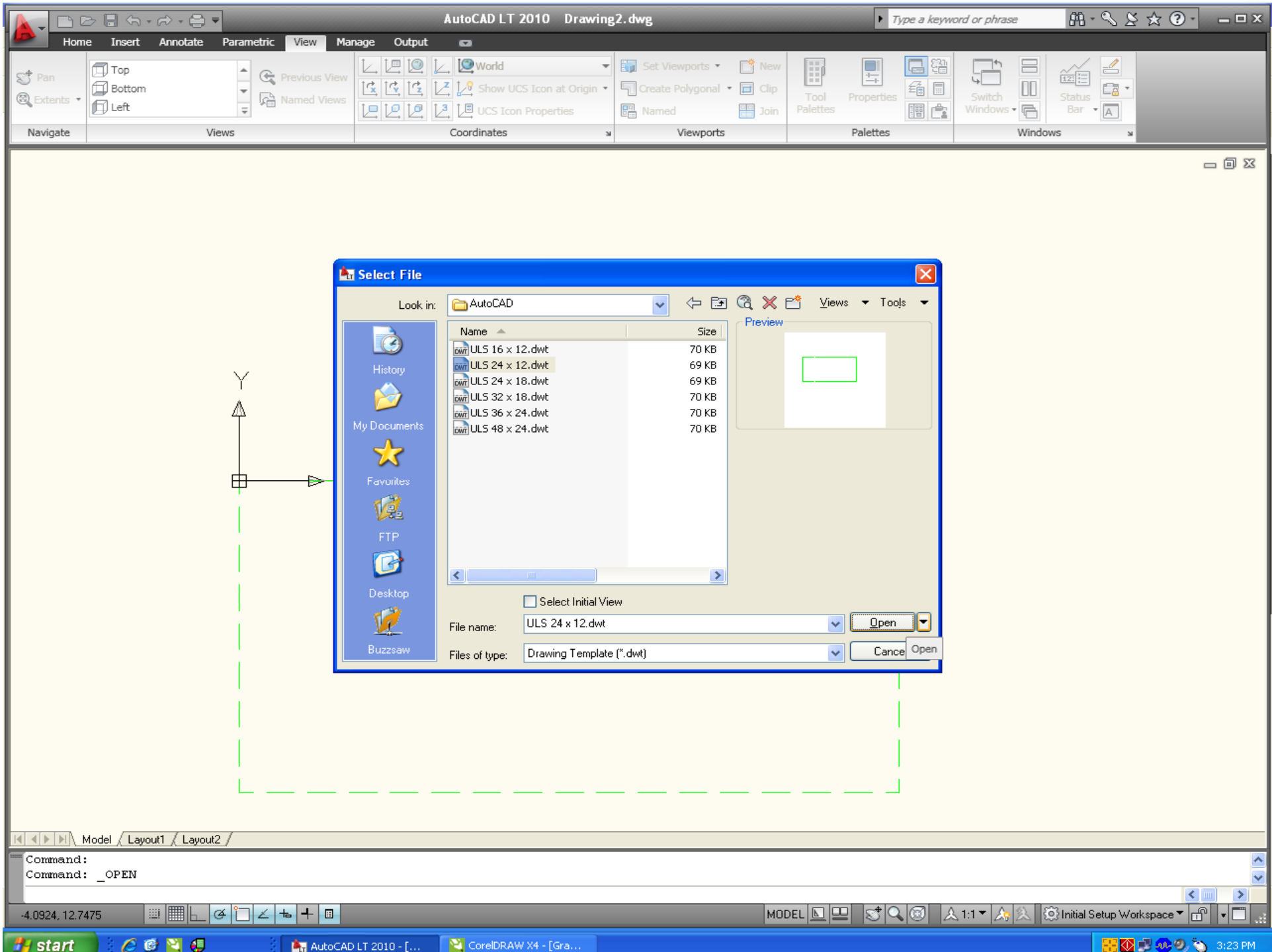


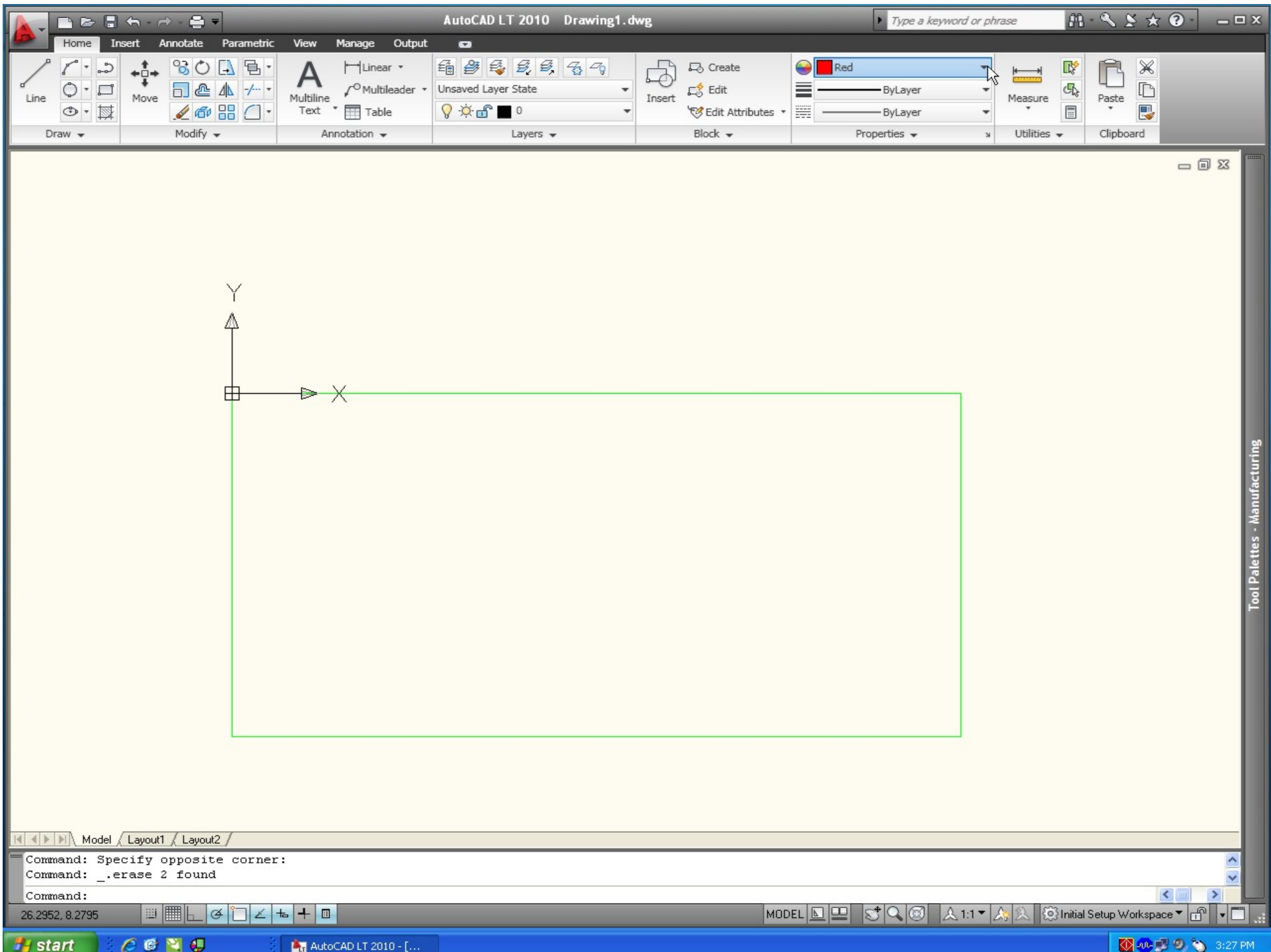


Open the pre-configured Template that matches the work area of the system you are using.

In the following slides, the 24" x 12" template is shown.



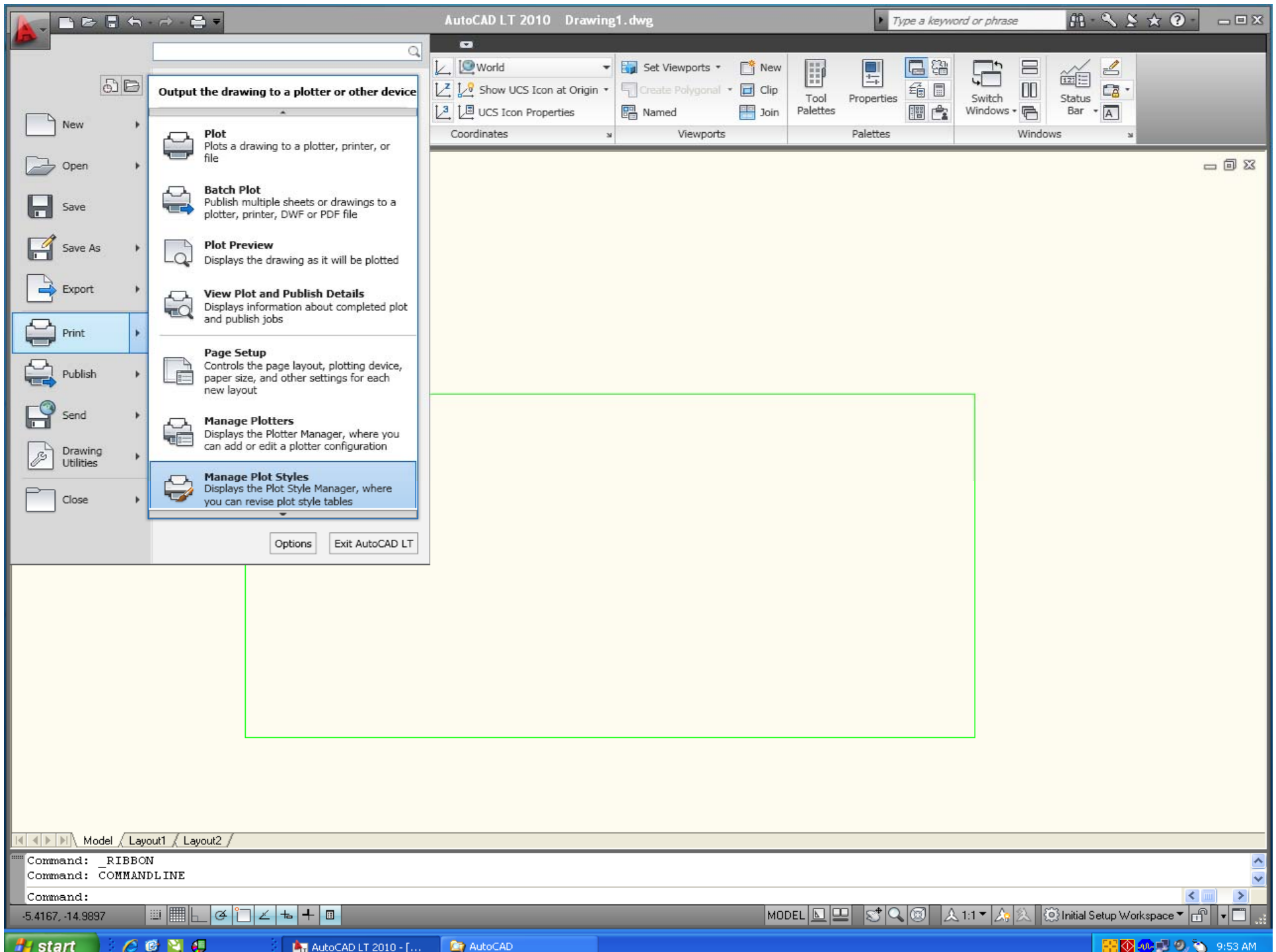


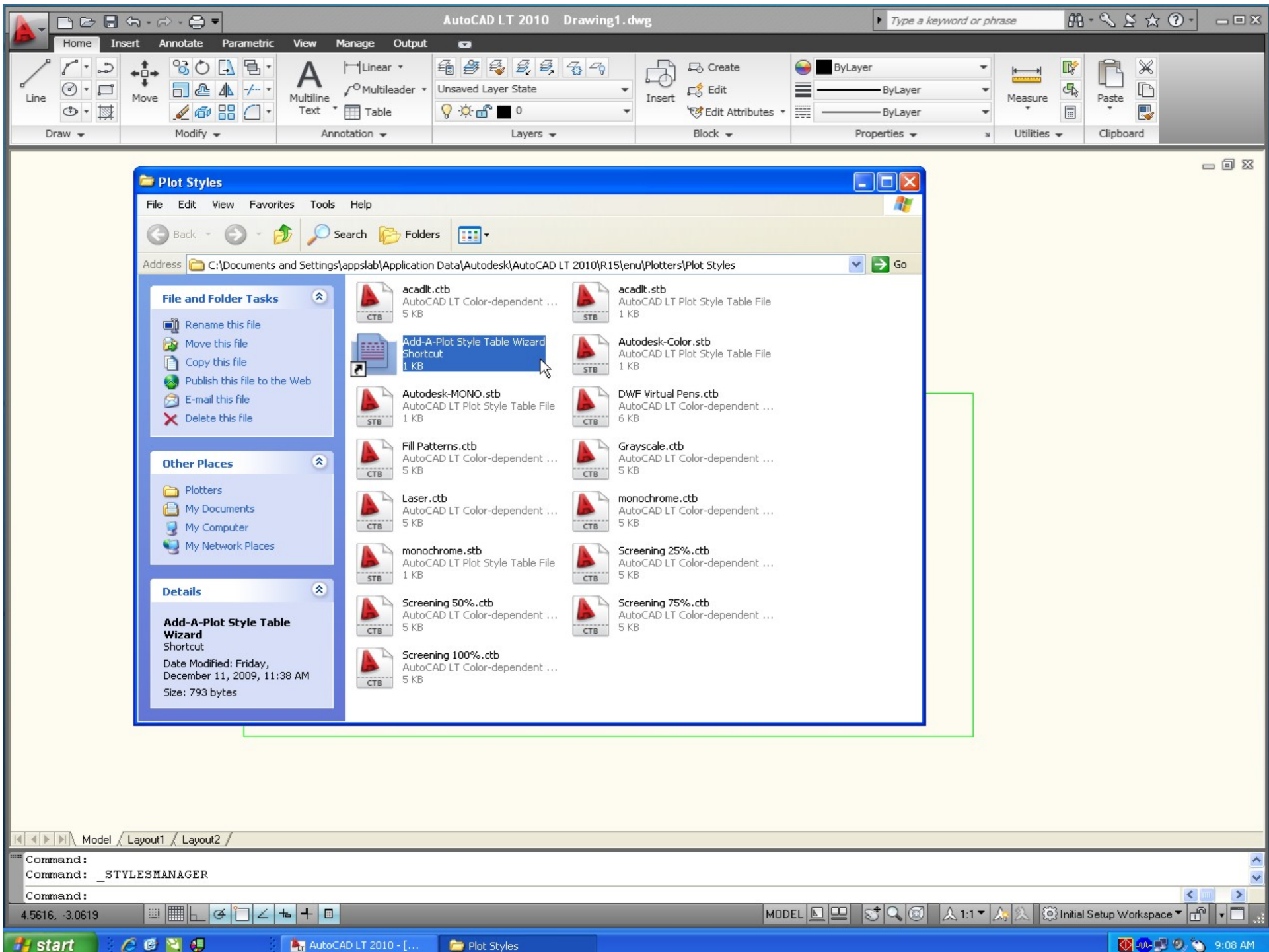


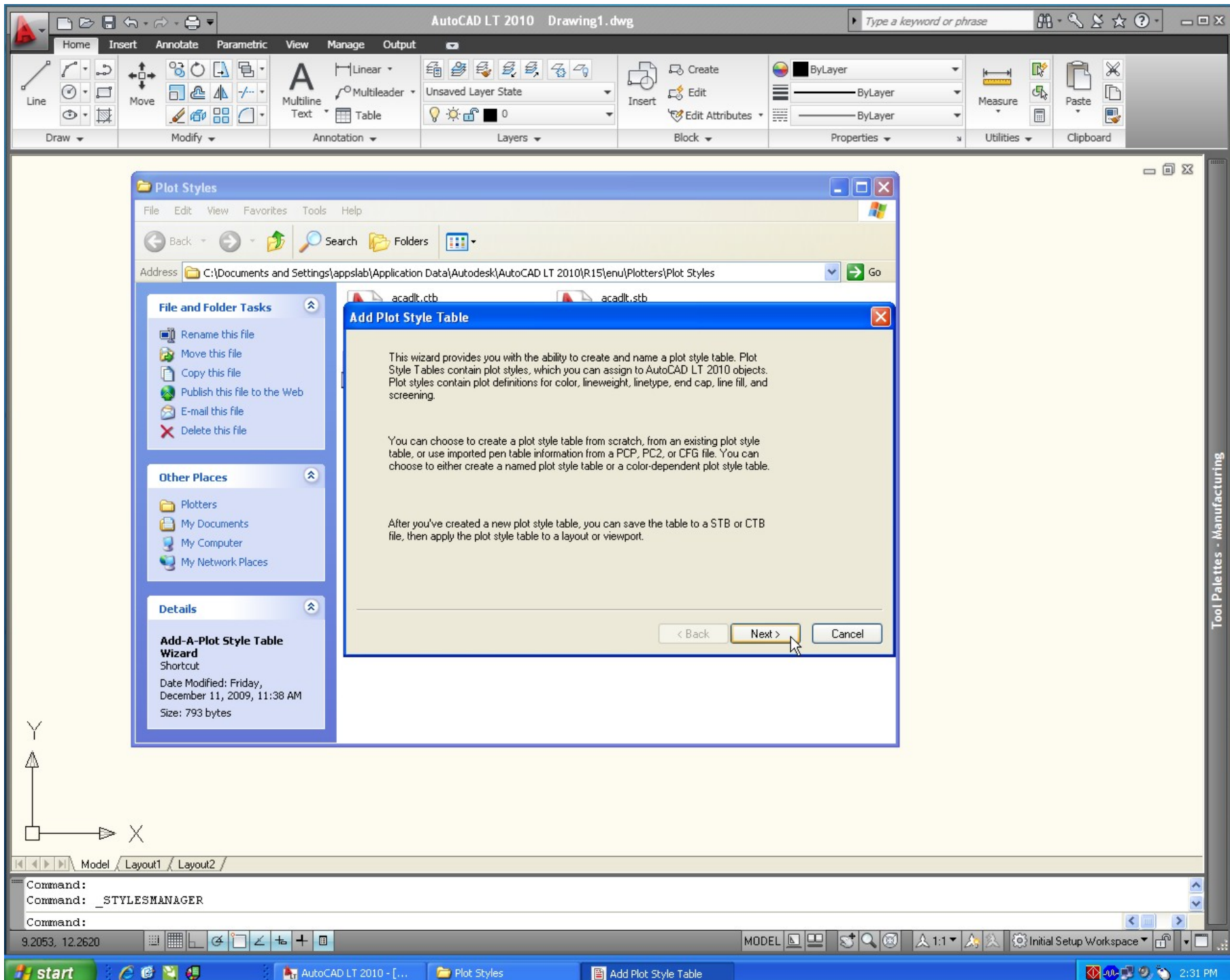
Tool Palettes - Manufacturing

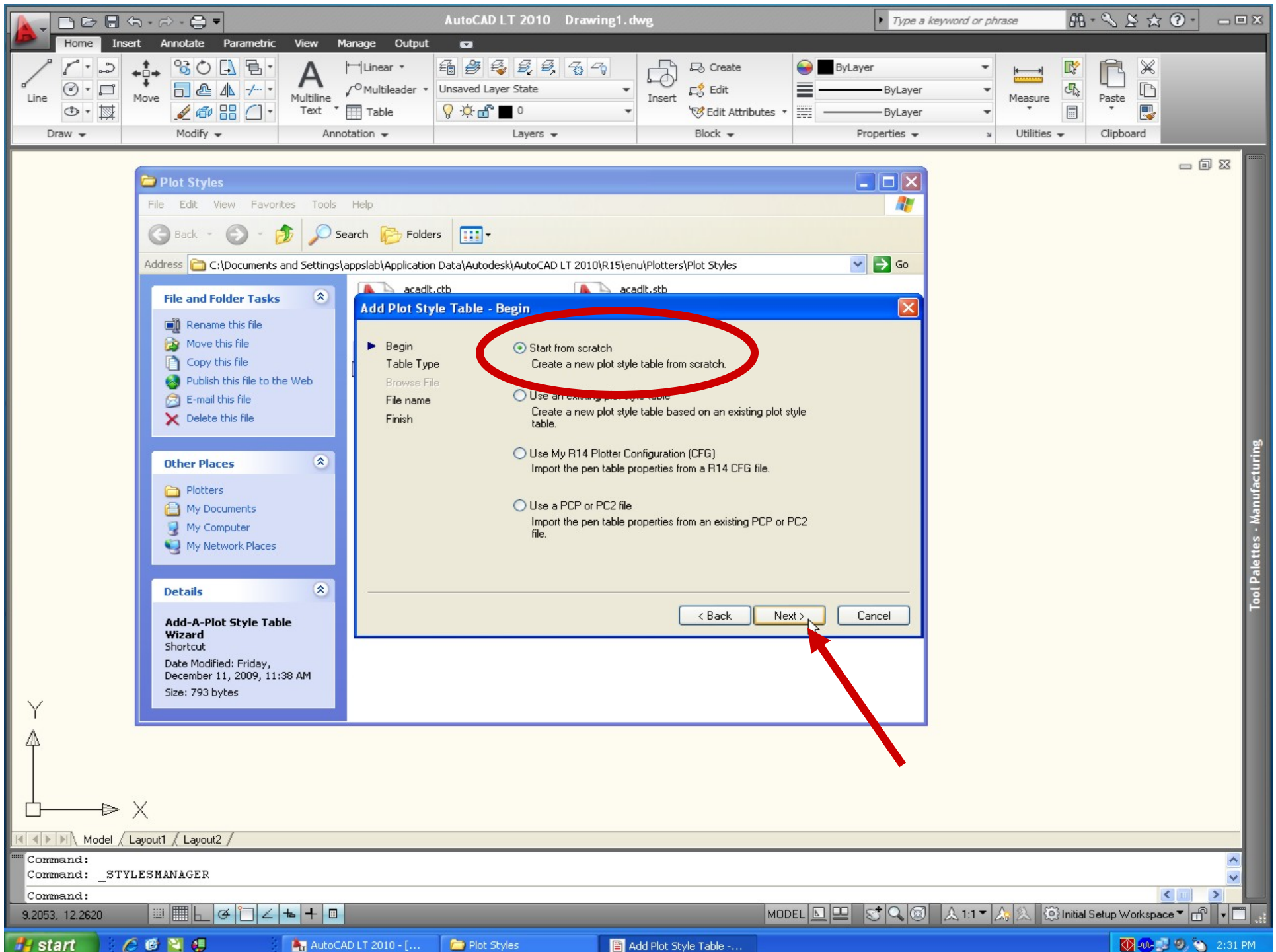
**Create a 'Plot Style Table'
to create default
line weights.**

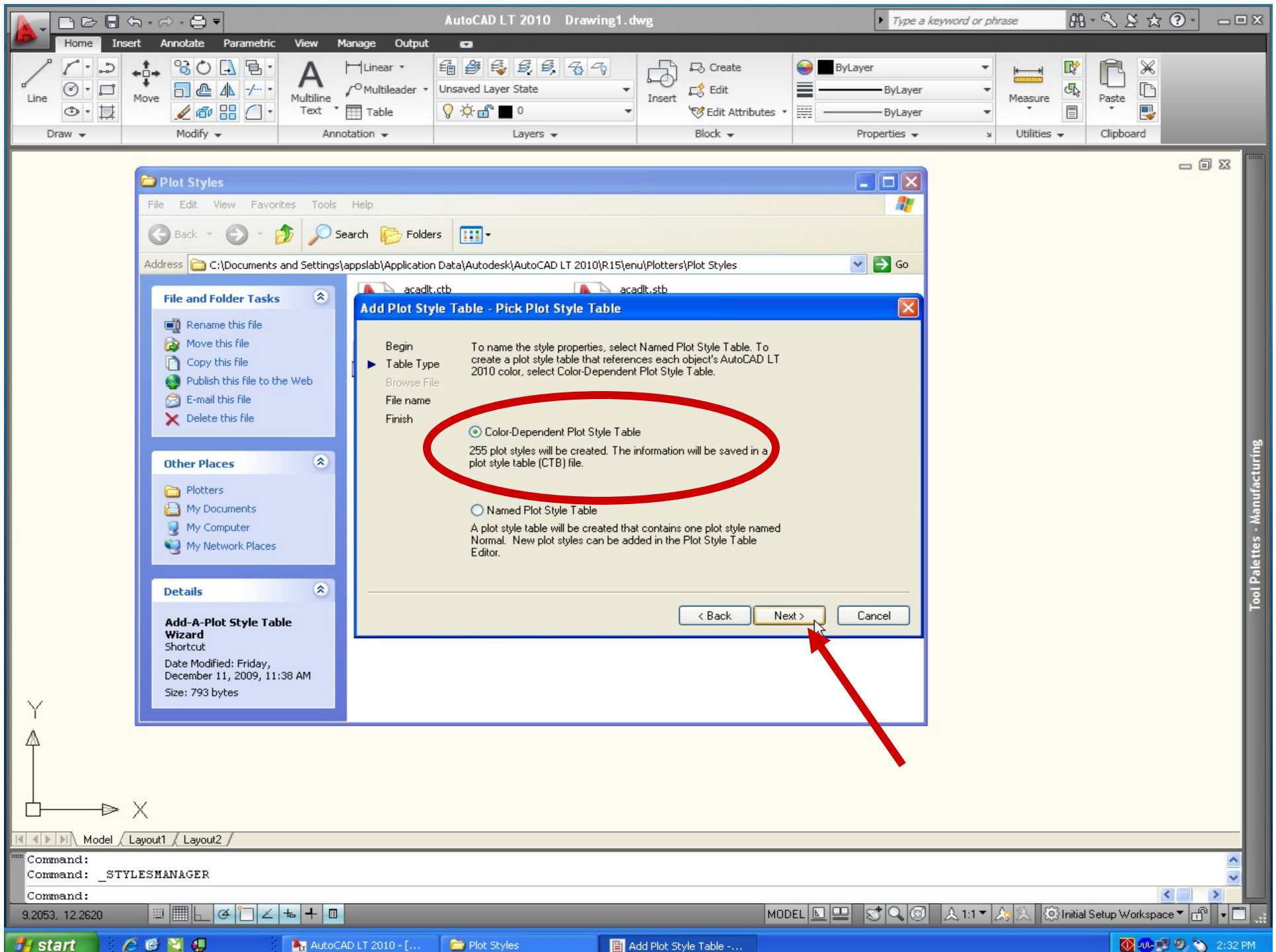
**Earlier versions of AutoCAD will be
slightly different but you still need to set a
'Plot Style Table'.**



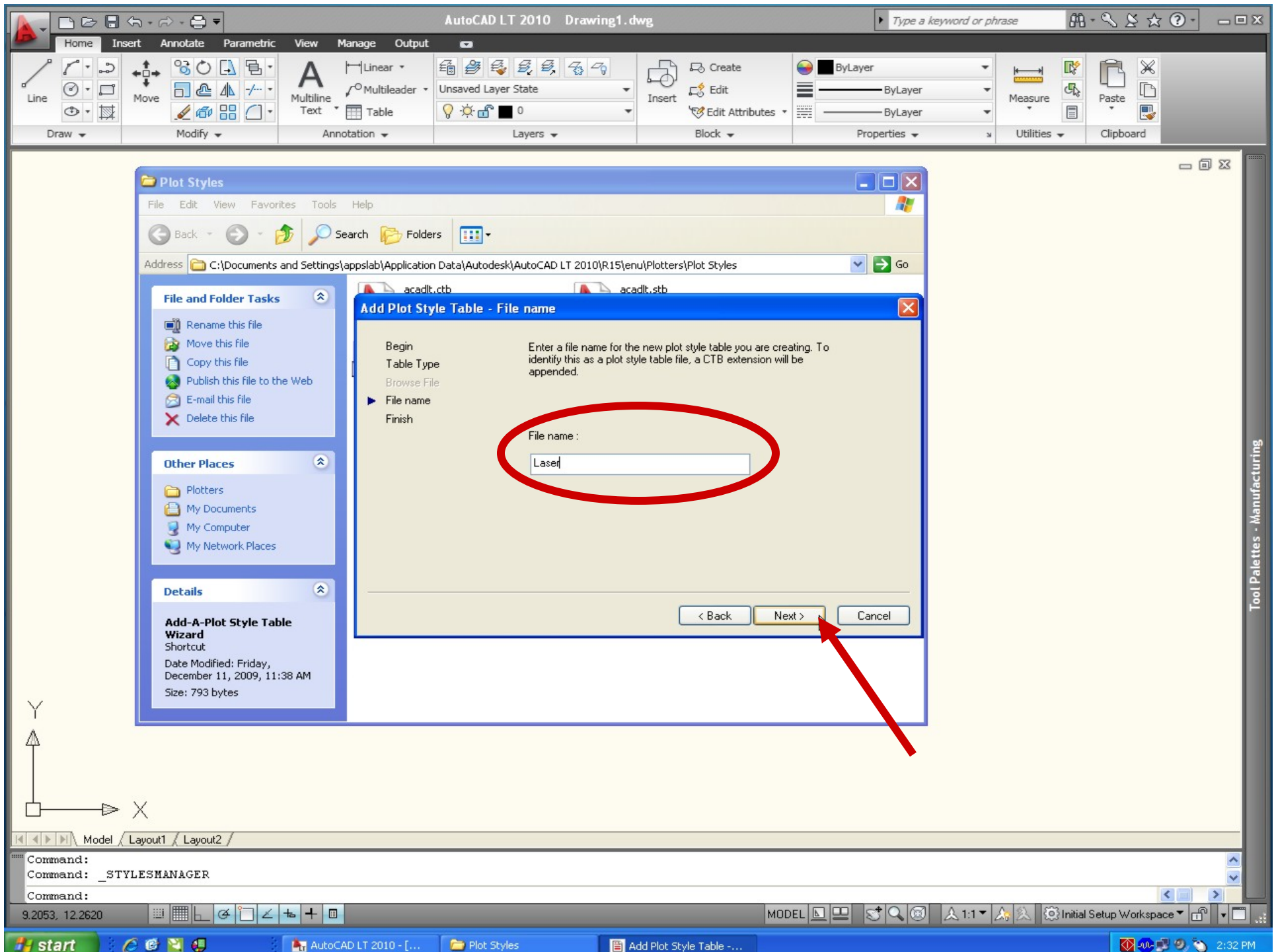




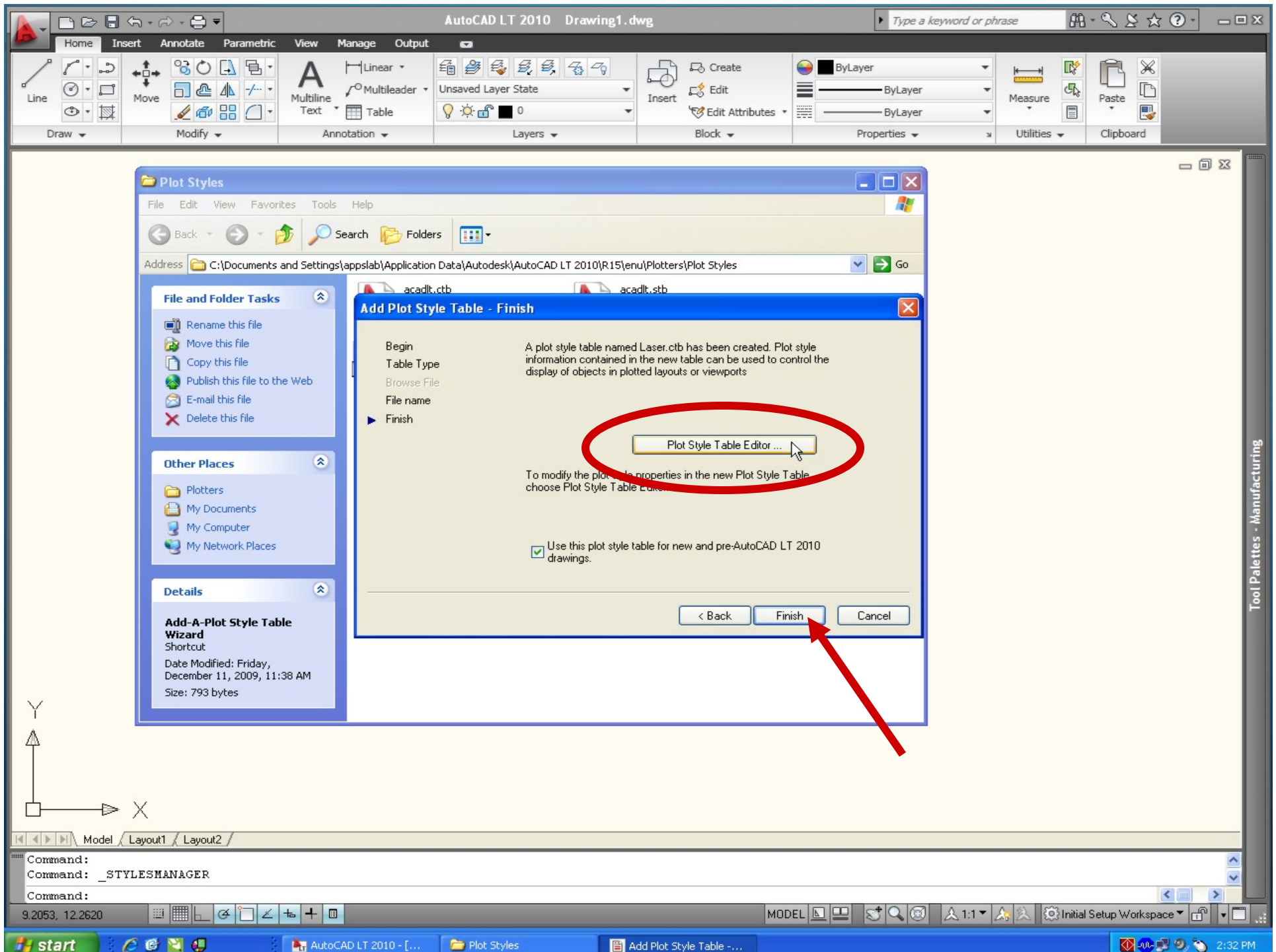




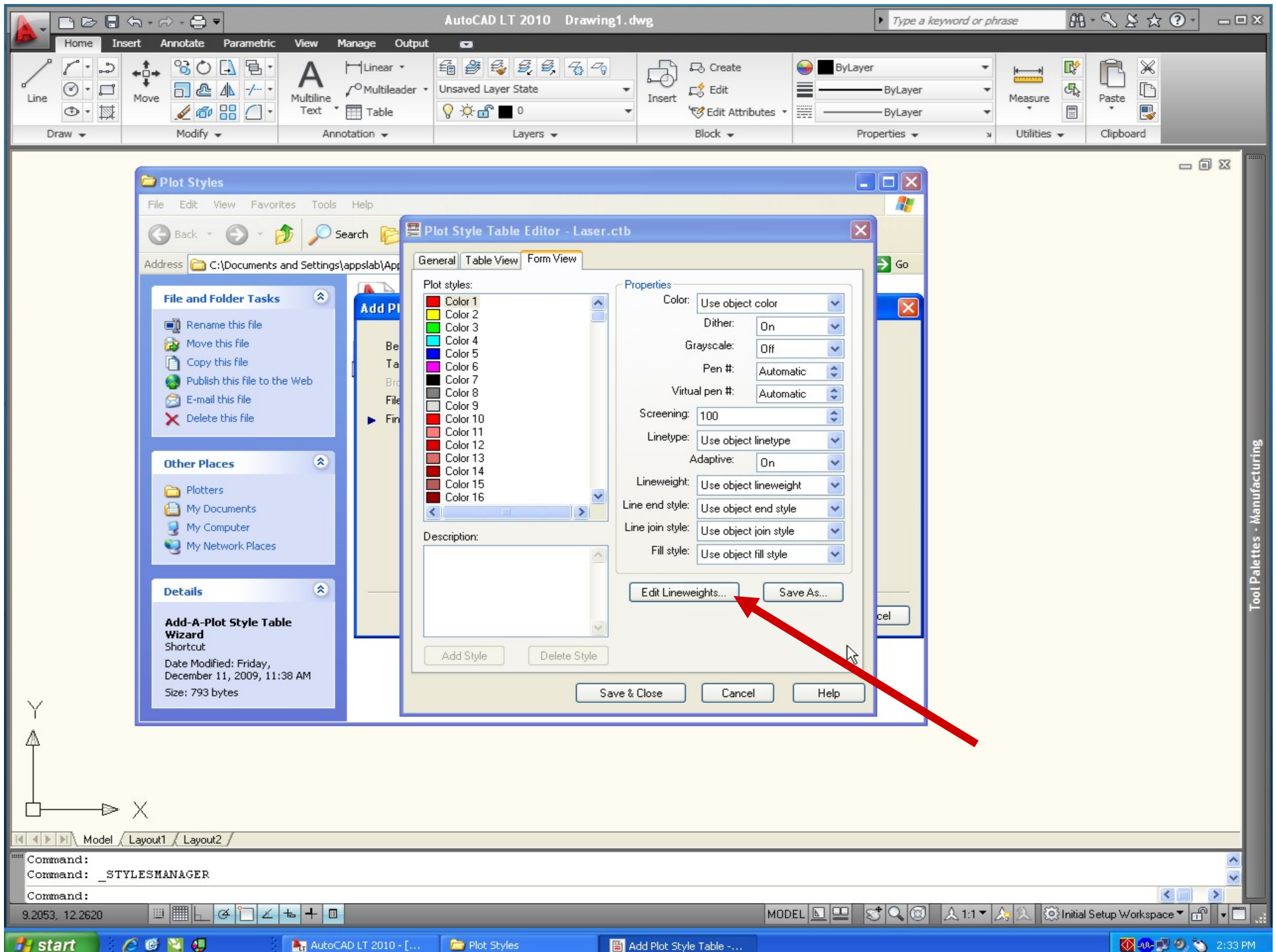
Name the Plot Style Table File as
'Laser'

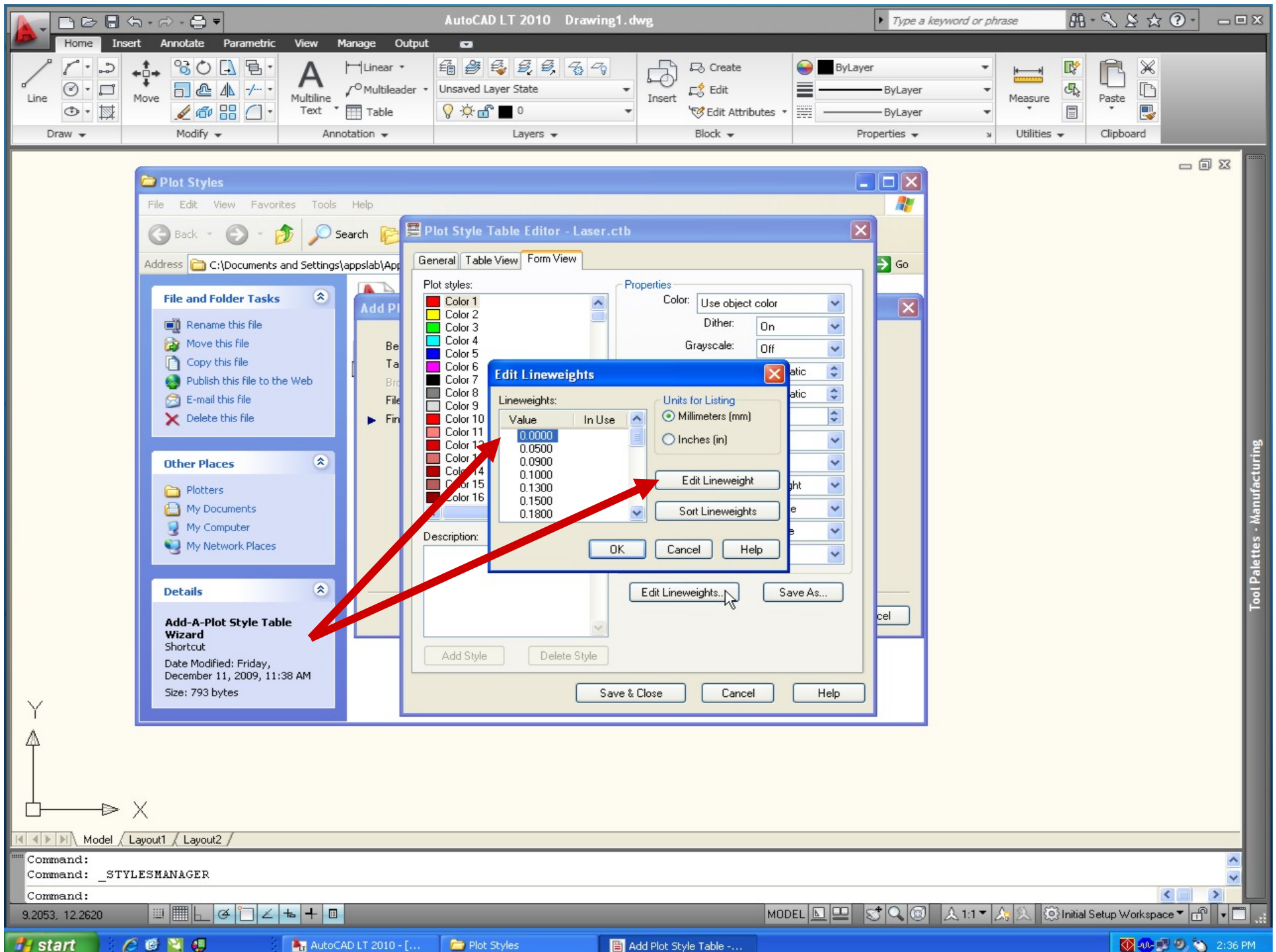


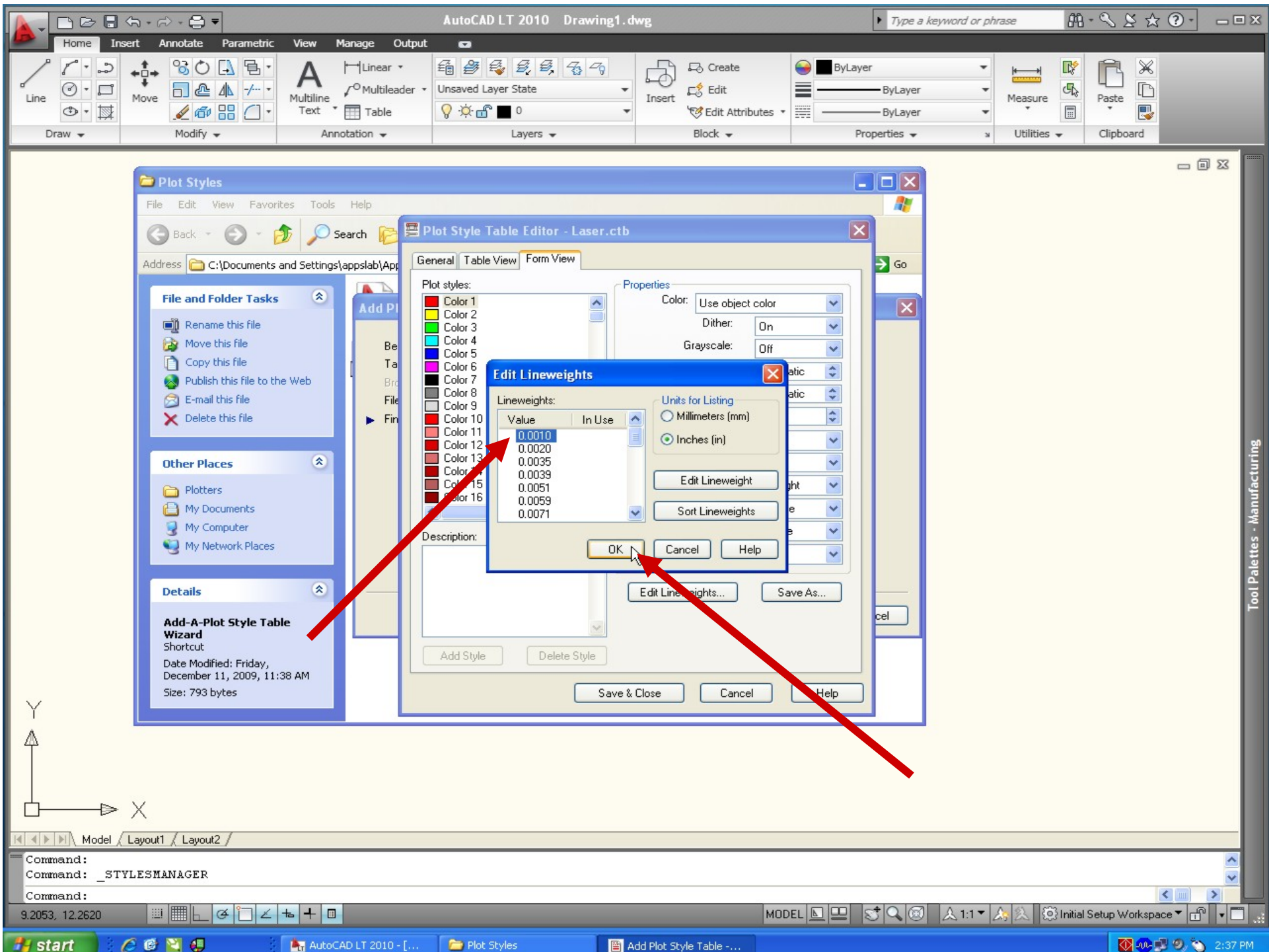
Edit the Plot Style Table File



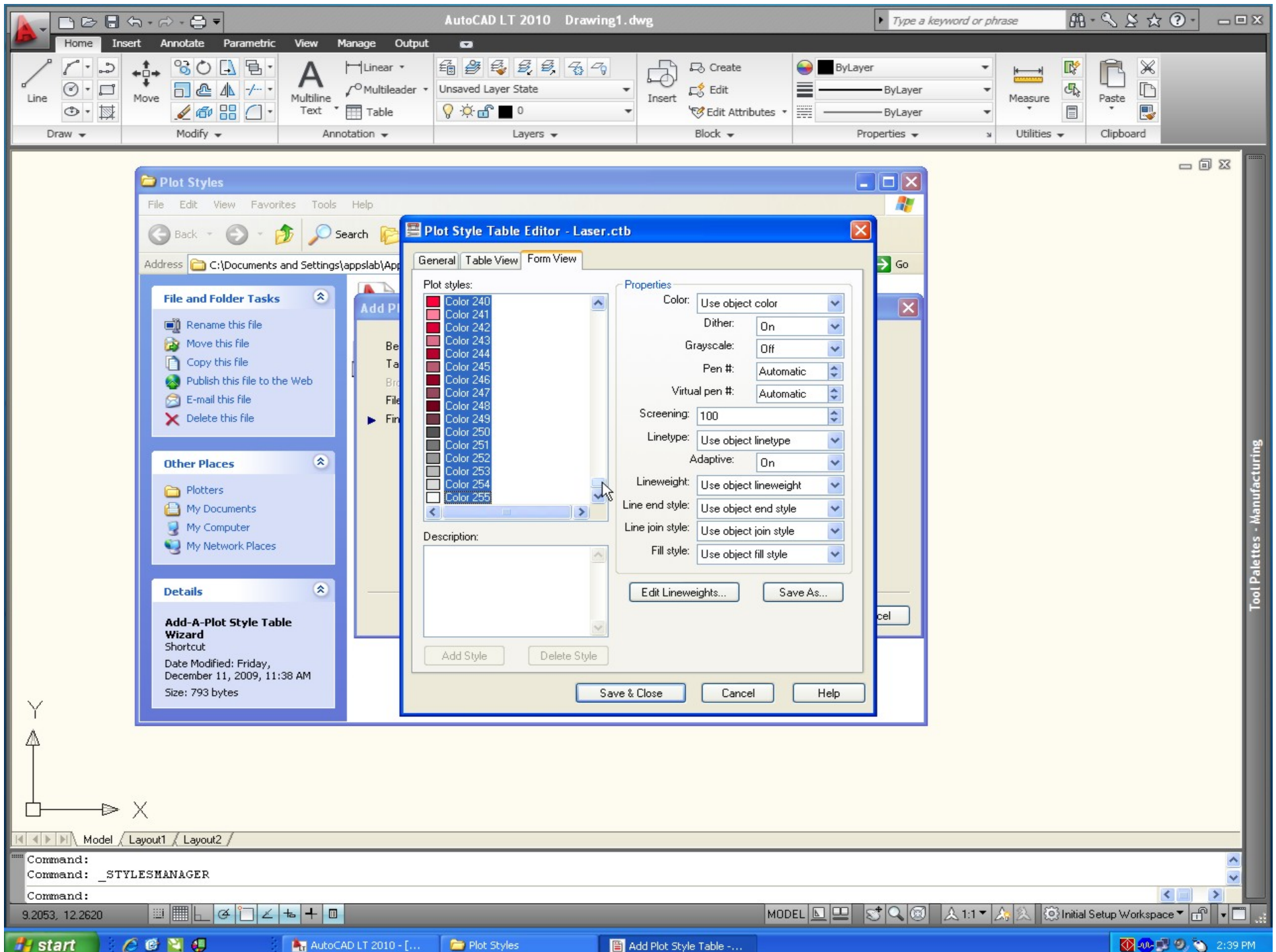
Edit the Plot Style Table for Lineweights to 0.001"

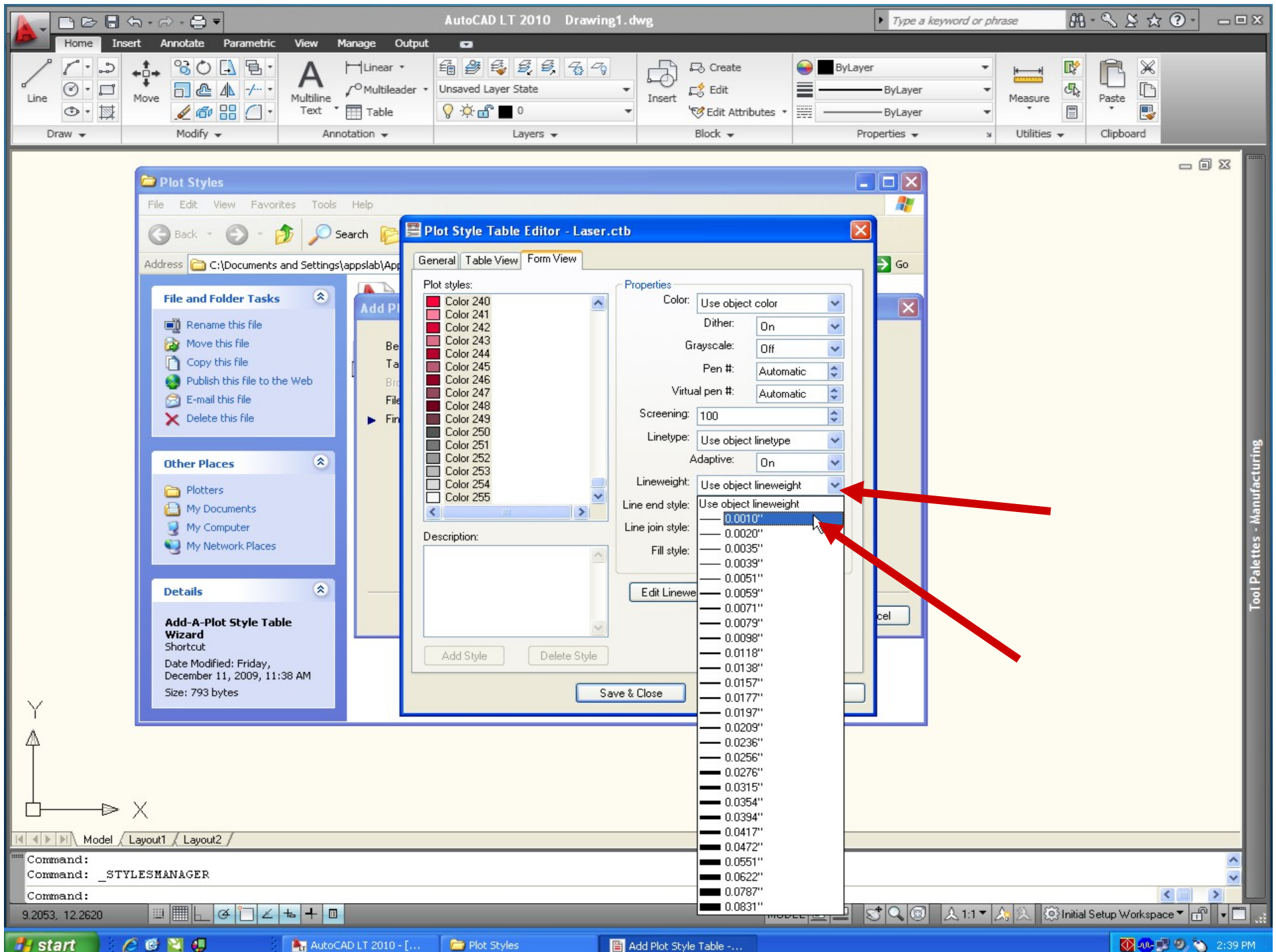




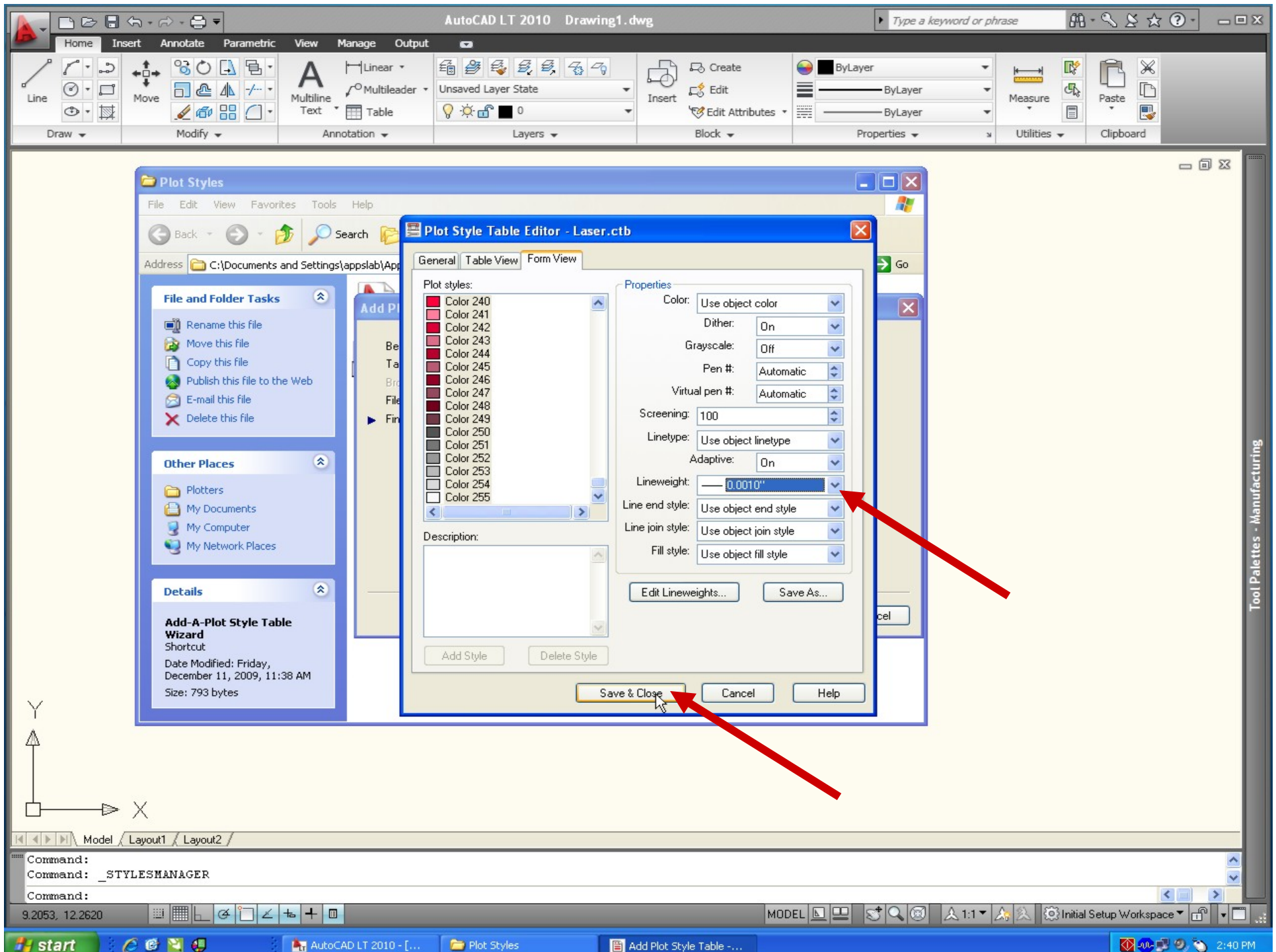


Select all colors and then apply
0.001" lineweight

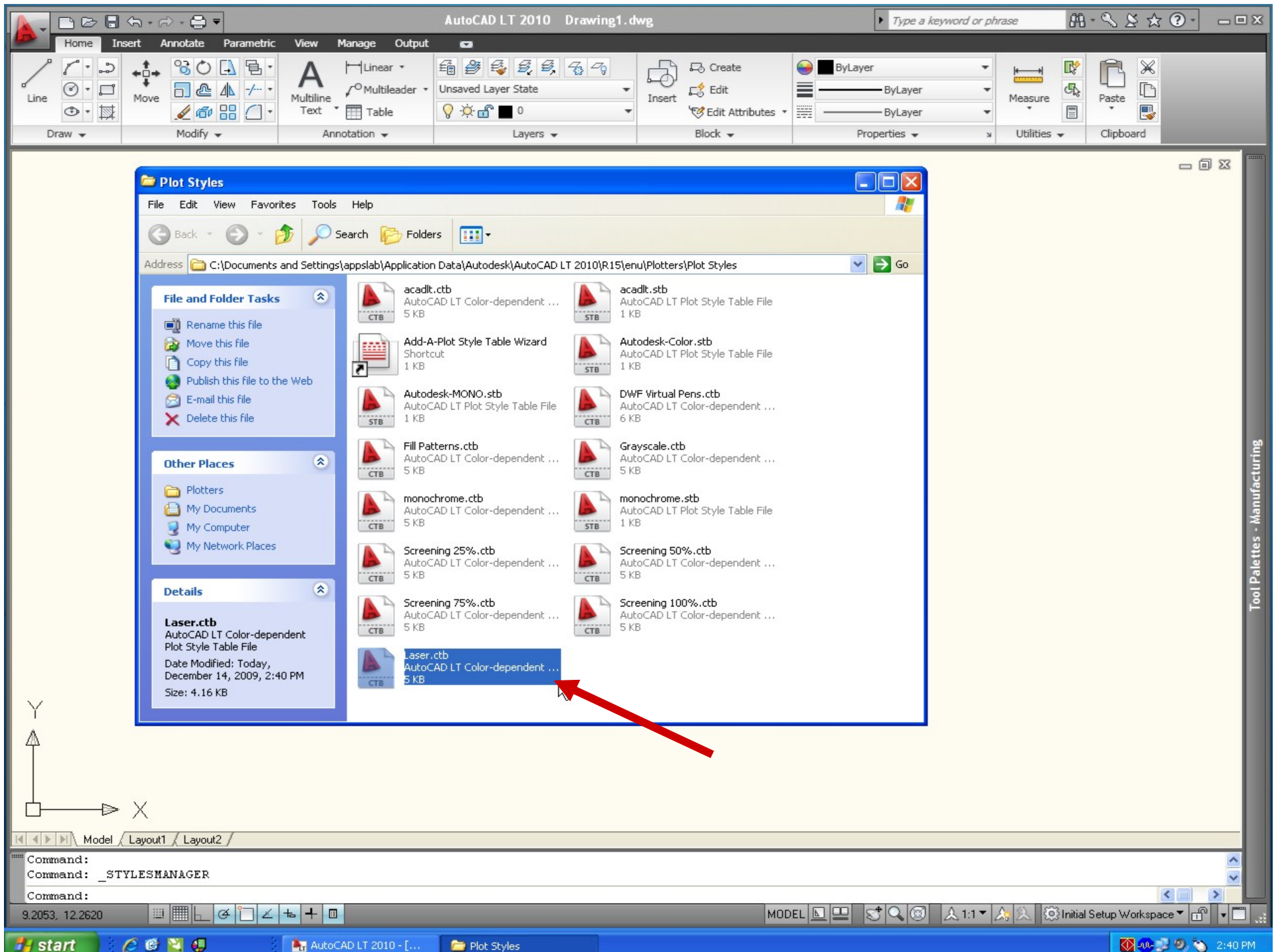




Save & Close



Plot Style Table now appears as
'Laser.ctb' for use by AutoCAD



AutoCAD Set-up Complete