

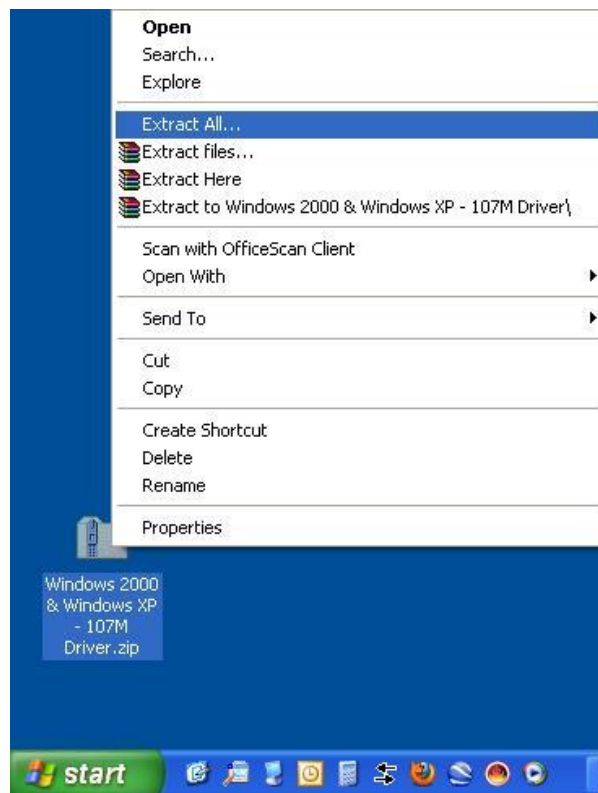
Windows XP - MVX Printer Driver Installation

READ FIRST!

This document assumes you have already downloaded the driver installer ZIP package from either the Universal Laser Systems website or Universal Laser Systems FTP site.

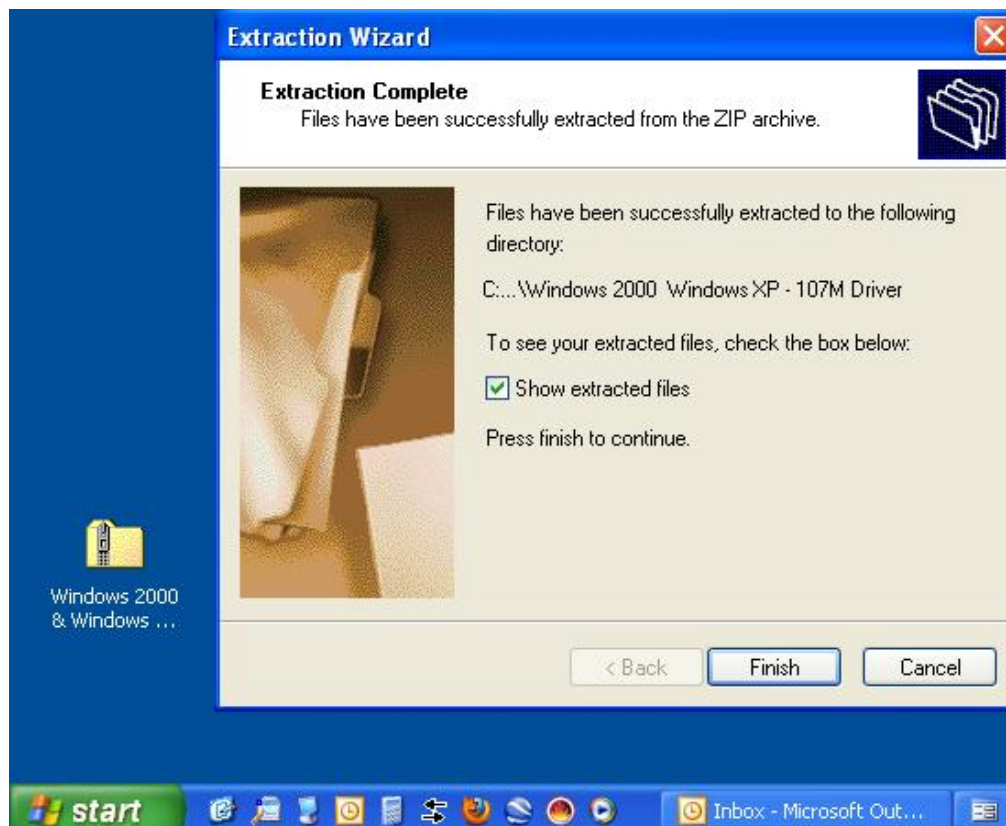
For ease of explanation, I have selected V Class as the engraver to install the driver onto a Windows XP computer. You will need to ensure that you select the same model in the driver as what the engraver displays when it boots up – failure to use the correct driver will result in a driver conflict error.

Step 1 – The ZIP file installer package should be on your desktop:

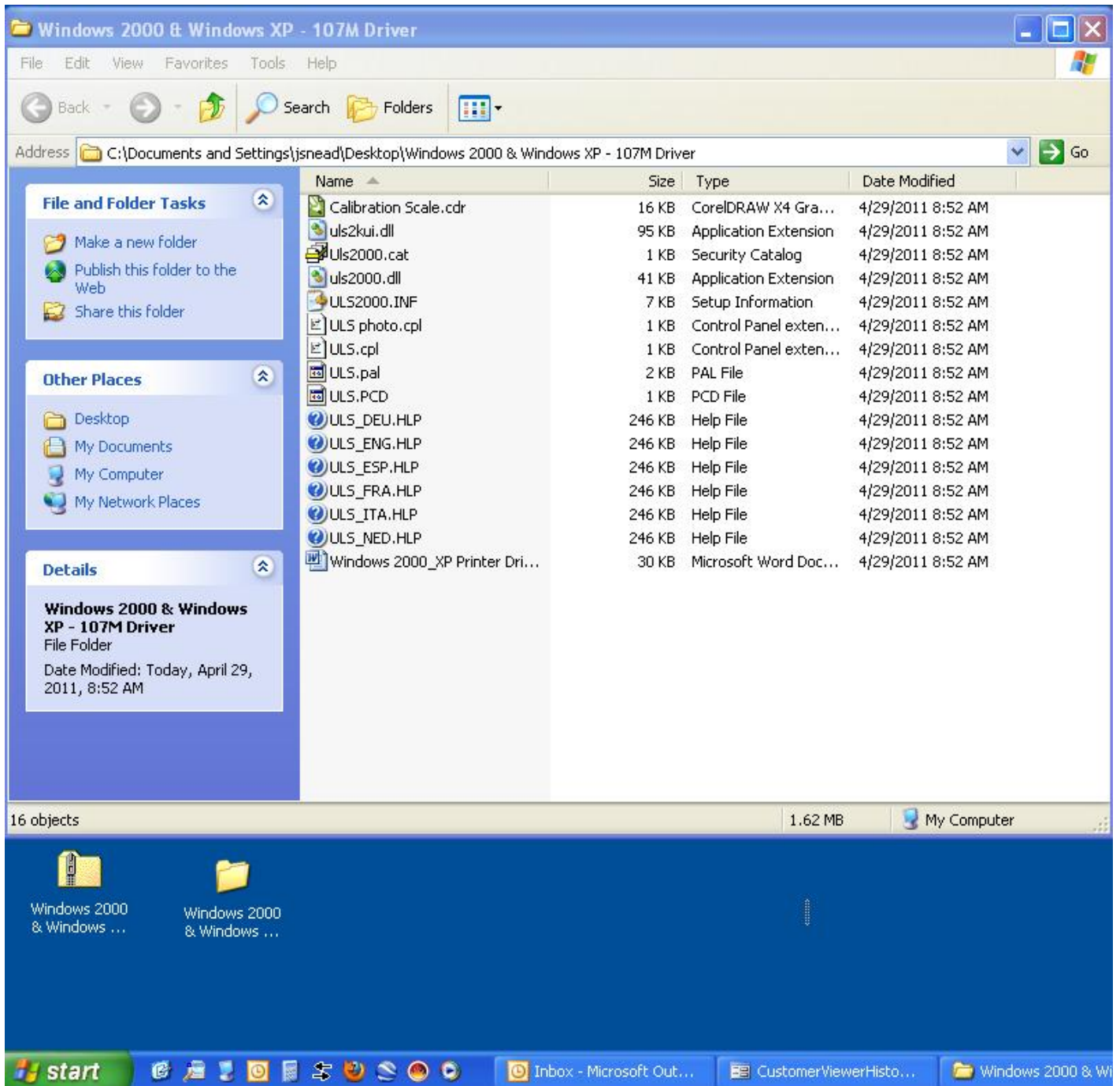


Right click on the ZIP folder and Select “Extract All” to bring up the wizard to unzip the file. If you don’t have a built-in extraction utility such as this, you will need to use WinZip or other extraction utility to unzip the ZIP file.

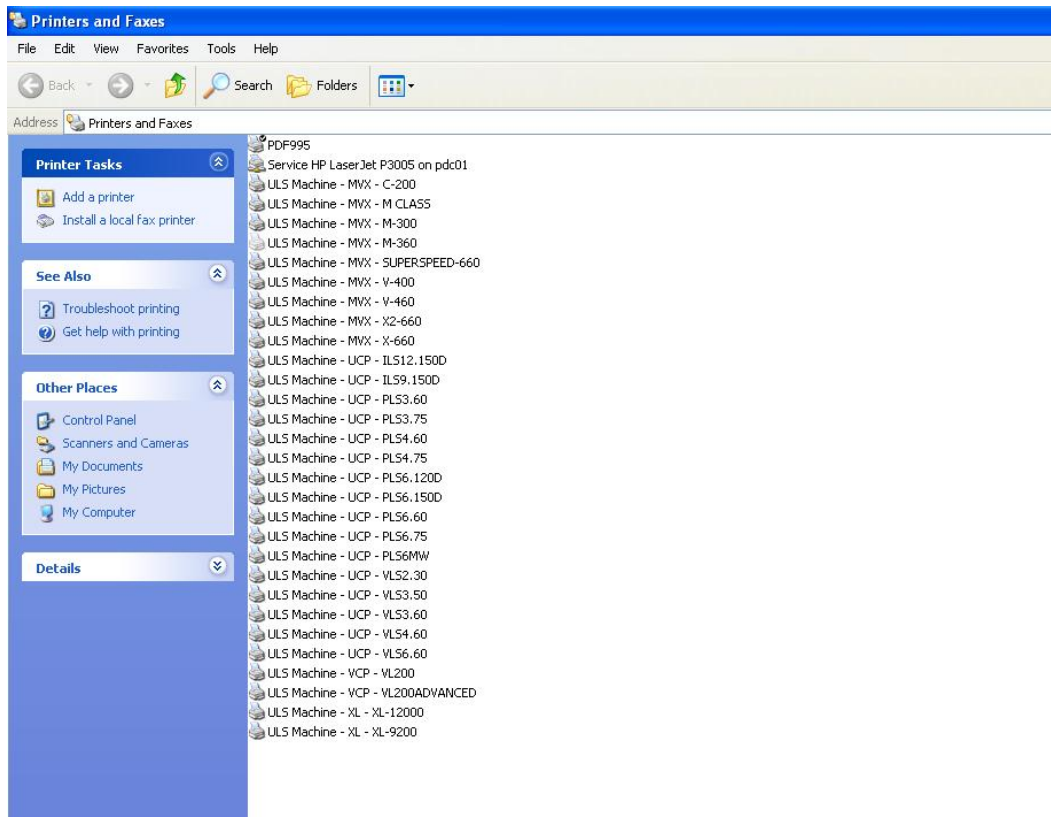
Step 2 – Follow through the default steps to extract the ZIP folder to your desktop (or other place you can easily find on your computer):



When the extraction wizard closes, you should see the extracted folder with all of the driver files:



Step 3 – Navigate to the Printers & Faxes folder to start the printer installation wizard. Once the Printers & Faxes window opens, click on the “Add a printer” link to start the wizard:



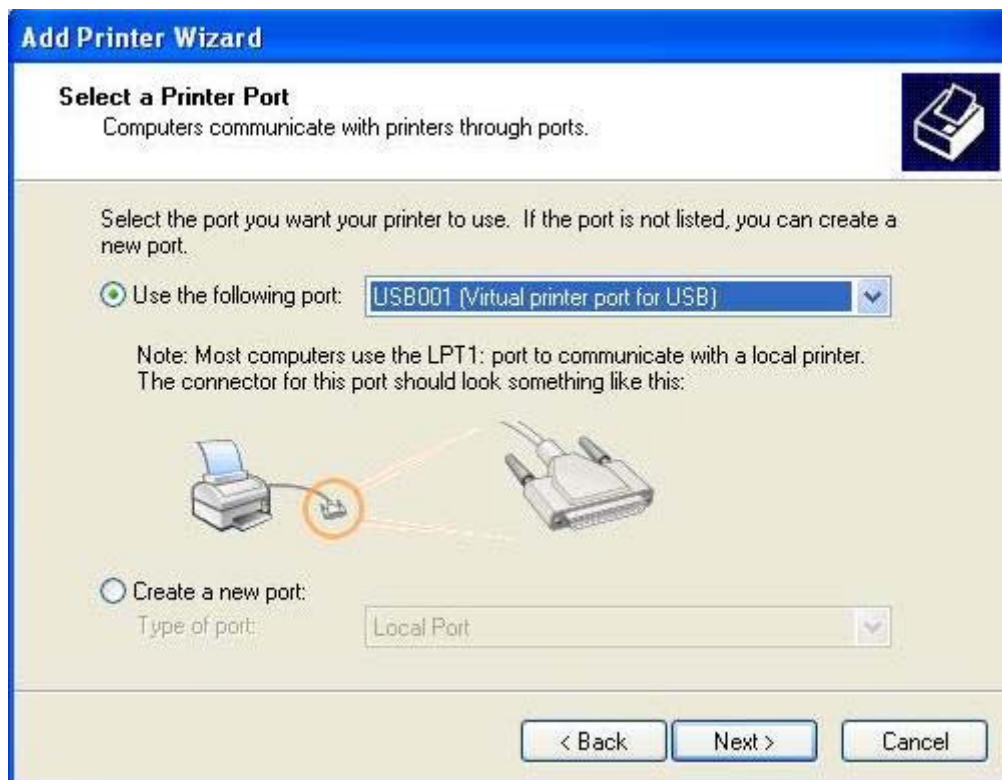
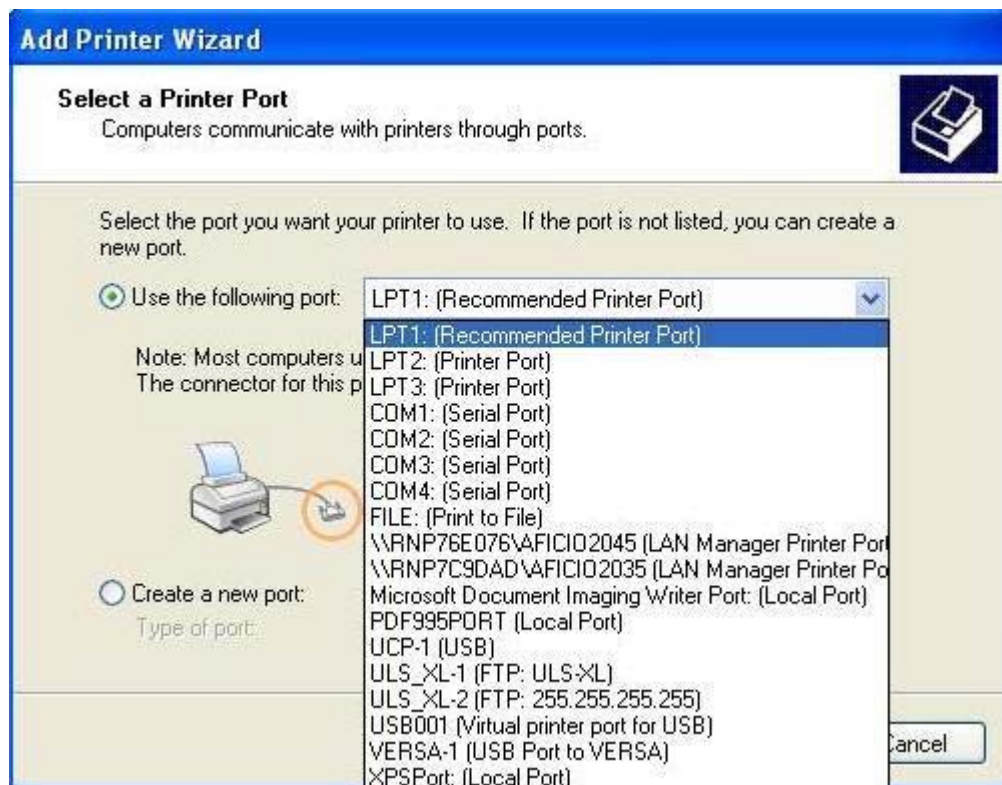
Depending on your version of Windows, this procedure will vary. The procedure shown from here on out is for Windows XP. Windows 7 & Windows Vista will look similar but the screens will have some variation from the screens shown below.

Step 4 – The Add Printer Wizard starts, click Next:

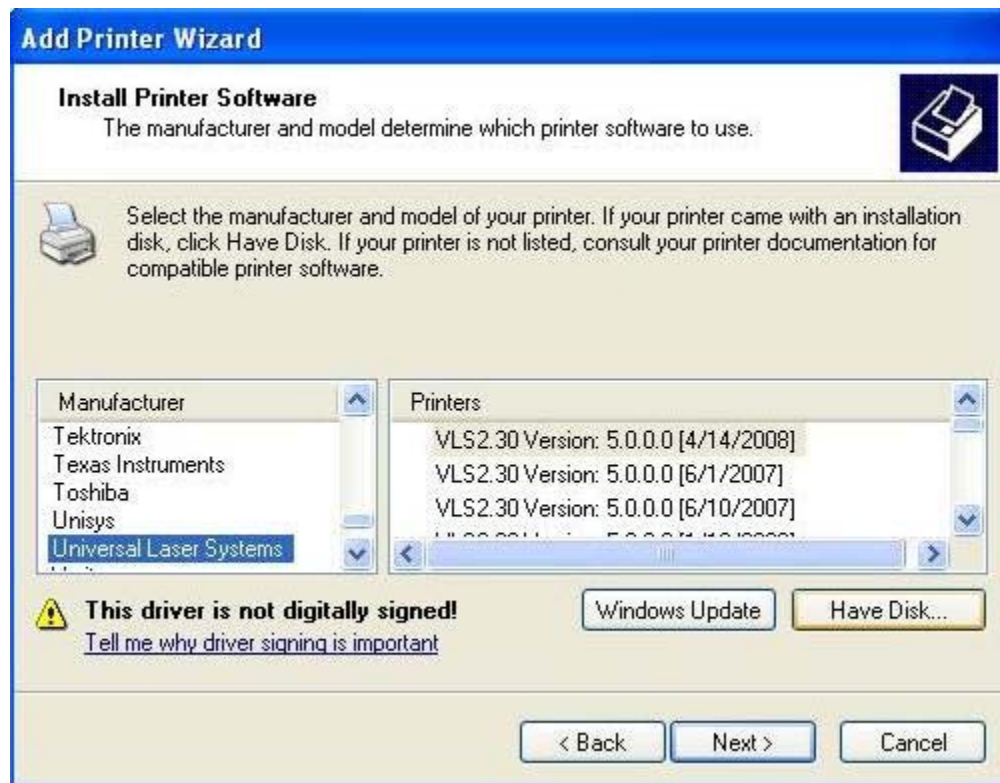


Be sure that “**Local printer attached to this computer**” is selected and “**Automatically detect and install my Plug and Play printer**” is **UNCHECKED**, then click **Next**.

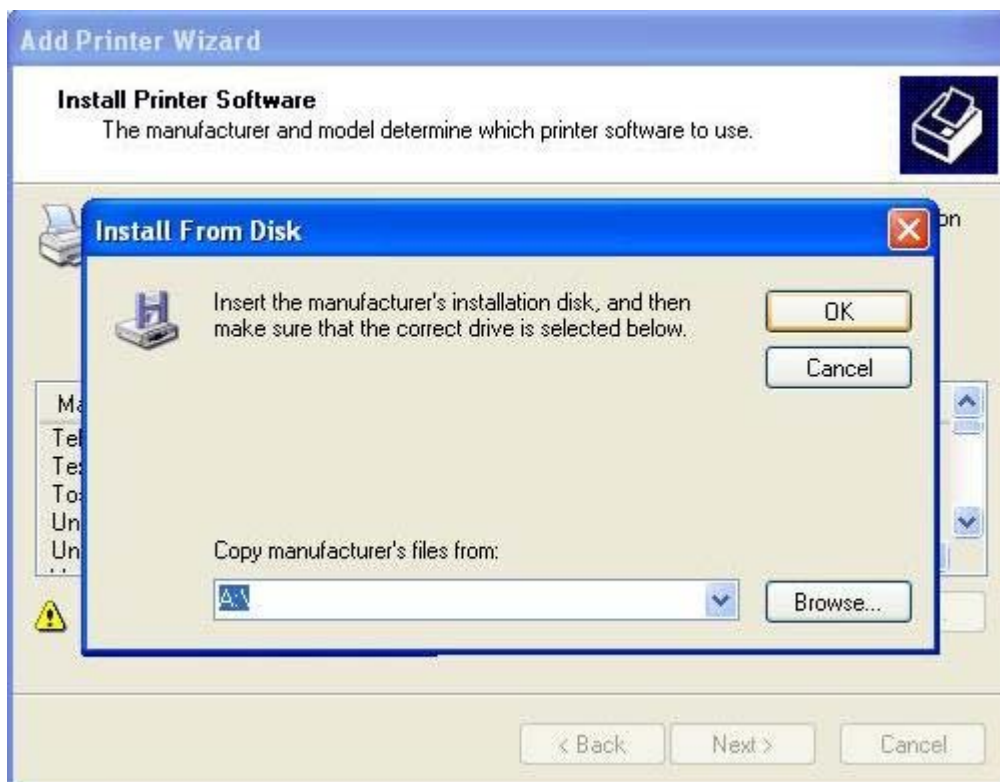
Step 5 – Select the correct port. In this example, I am installing a V Class on a Windows XP computer that is connected with a Parallel to USB cable. If your cable is a parallel to parallel cable, you will need to select an LPT port, usually LPT1. If your cable is a parallel to USB cable, you will need to select a USB00 port, usually USB001. After the correct port selection is made, click **Next**:



Step 6 – Click the **Have Disk** button:



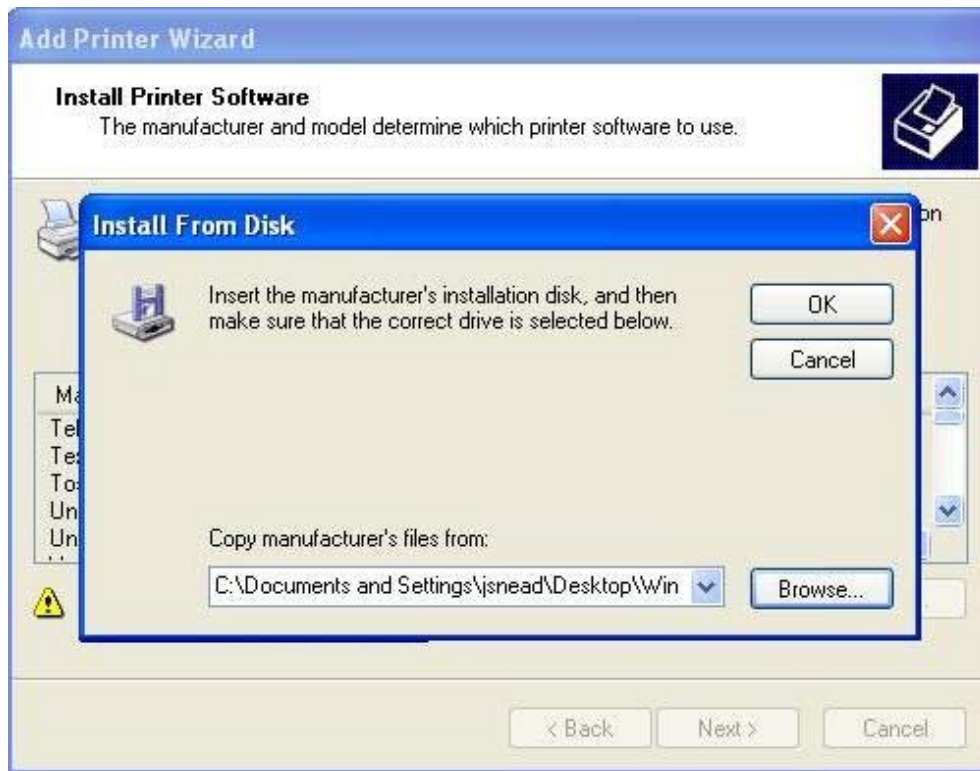
Step 7 – An **Install From Disk** window opens, click on the **Browse** button:



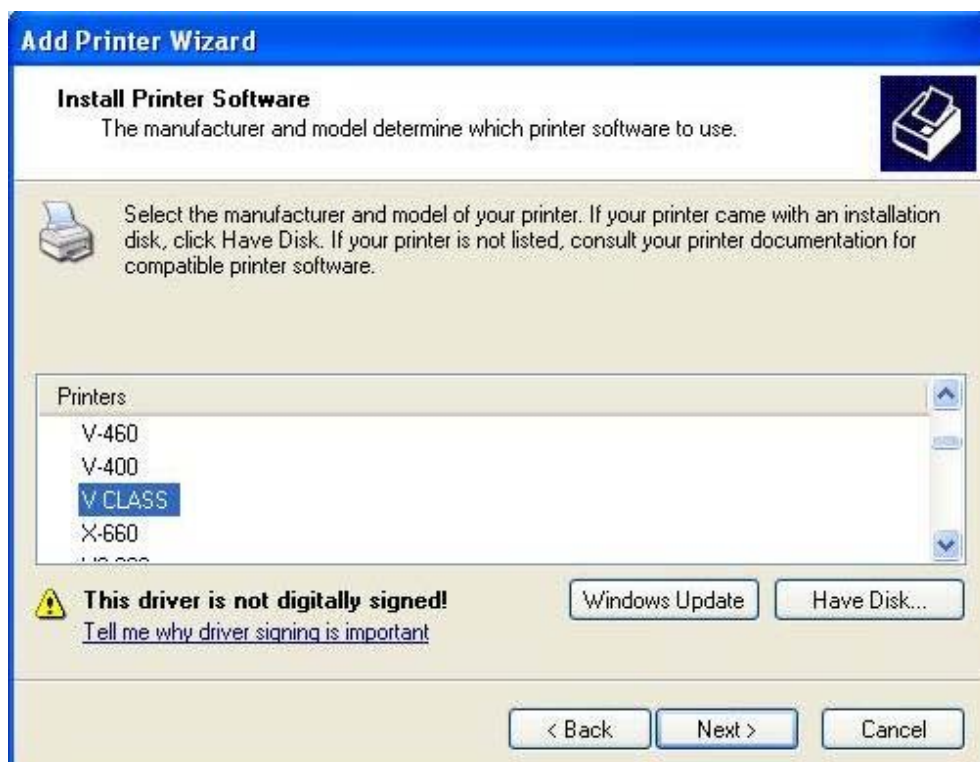
Step 8 – The **Locate File** window opens. Use this window to navigate to the driver folder that you previously unzipped. Inside that folder, you will see a file named **“ULS2000.inf”** (the .inf extension may be hidden but this is not a problem. **Double-Click** on the **ULS2000.inf** file:



Step 9 – After the ULS2000.inf file is clicked on, the **Locate File** window will disappear leaving only the **Install From Disk** window and the **Add Printer Wizard** window. On the **Install From Disk** window, click **OK** and the **Install From Disk** window will close leaving only the **Add Printer Wizard** window:



Step 10 – On the **Add Printer Wizard** window, scroll through the available list to select the driver you wish to install. In this example, I have selected **V CLASS**. After selecting your driver model, click **Next**:



Step 11 – Ensure that the printer name reads the same as the model you select and then click **Next**. It is not necessary to choose the default setting at this point as that can be changed at any time after driver is installed:



The screenshot shows the 'Add Printer Wizard' dialog box with the title bar 'Add Printer Wizard'. The main heading is 'Name Your Printer' with a sub-heading 'You must assign a name to this printer.' and a printer icon. The text below reads: 'Type a name for this printer. Because some programs do not support printer and server name combinations of more than 31 characters, it is best to keep the name as short as possible.' There is a text input field labeled 'Printer name:' containing the text 'V CLASS'. Below this is the question 'Do you want to use this printer as the default printer?' with two radio button options: 'Yes' (unselected) and 'No' (selected). At the bottom are three buttons: '< Back', 'Next >', and 'Cancel'.

Step 12 – Ensure that “**Do not share this printer**” is selected and then click **Next**:



The screenshot shows the 'Add Printer Wizard' dialog box with the title bar 'Add Printer Wizard'. The main heading is 'Printer Sharing' with a sub-heading 'You can share this printer with other network users.' and a printer icon. The text below reads: 'If you want to share this printer, you must provide a share name. You can use the suggested name or type a new one. The share name will be visible to other network users.' There are two radio button options: 'Do not share this printer' (selected) and 'Share name:' (unselected) followed by an empty text input field. At the bottom are three buttons: '< Back', 'Next >', and 'Cancel'.

Step 13 – Ensure that “No” is selected under “Do you want to print a test page?” and then click **Next**:



Step 14 – **Finishing up** – the **Completing the Add Printer Wizard** screen appears. Click **Finish**:



Immediately after clicking on the Finish button, you will get a warning message about the driver software saying it has not passed Windows Logo testing. When you see this, click **Continue Anyway** and the warning window will close. You will now see a **Copying Files** window appear showing the file transfer. When the file transfer finishes, all windows will close:



After the Add Printer Wizard window closes, you will now see the new driver loaded. In this case there is now a **V CLASS** driver in the Printers & Faxes window:

