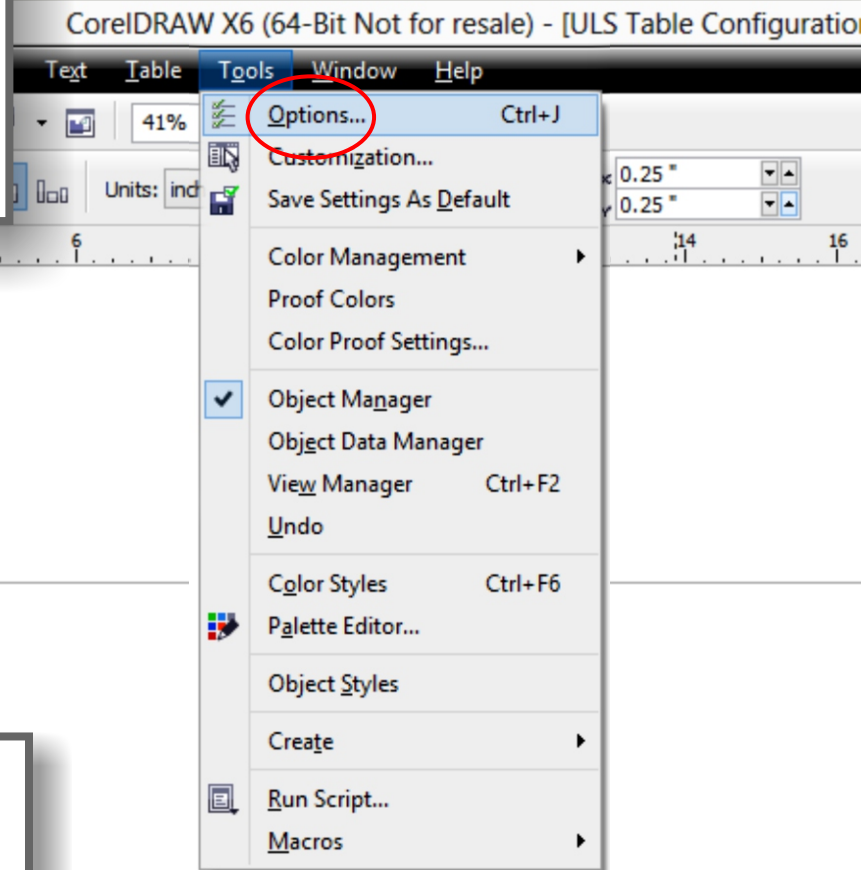
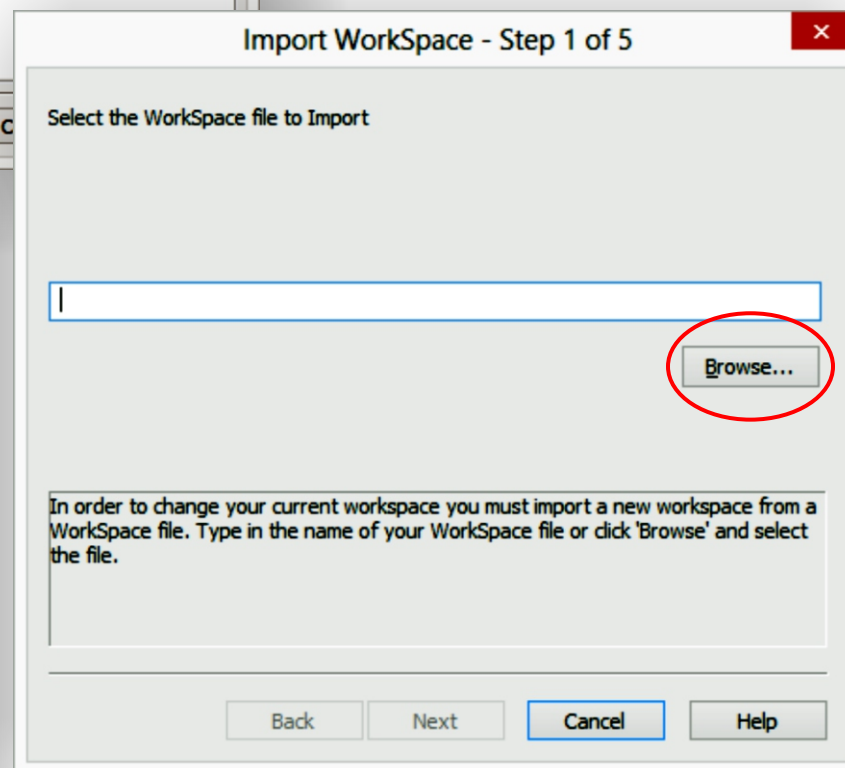
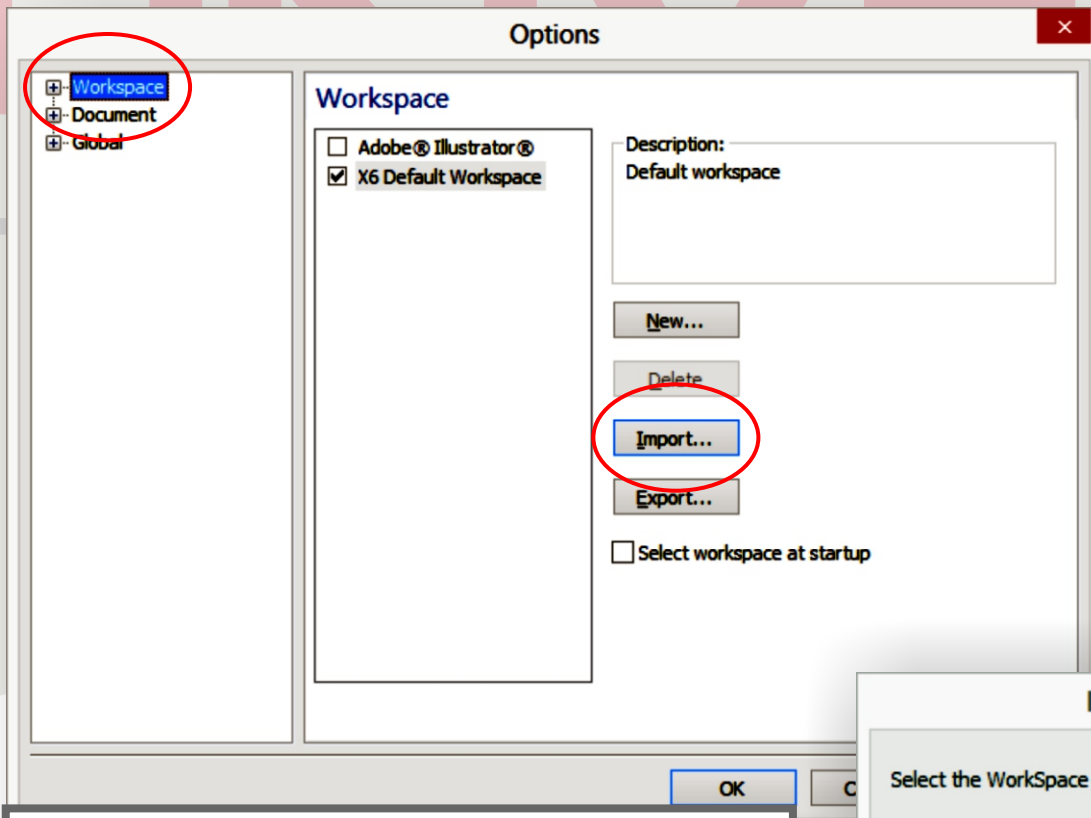


- Start with saving the attached CorelDraw profile to the desktop.
- Open CorelDraw.
- Open New Document.



- Select "Tools" Tab
- Select "Options"



- In Options window select the “Workspace” tab towards the upper left.
- Select “Import” button.
- Select “Browse” in the Import WorkSpace window.
- Select the appropriate workspace file and follow the instructions.

