

APPROXIMATE SYSTEM SPEEDS

MODEL NUMBER

TOP RASTER SPEED

TOP VECTOR SPEED

LEGACY SYSTEMS

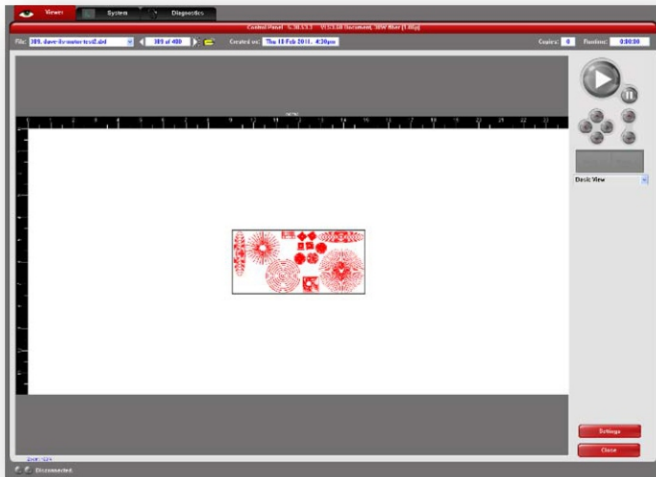
C-200	40 IPS	10 IPS
M-CLASS	45 IPS	12 IPS
M-15	40 IPS	10 IPS
M-20	40 IPS	10 IPS
M-25	40 IPS	10 IPS
M-30	45 IPS	12 IPS
M-35	45 IPS	12 IPS
M-300	45 IPS	12 IPS
M-360	75 IPS	19 IPS
V-CLASS	55 IPS	14 IPS
V-400	55 IPS	14 IPS
V-460	75 IPS	19 IPS
X-CLASS	65 IPS	16 IPS
X-35	65 IPS	16 IPS
X-40	65 IPS	16 IPS
X-45	65 IPS	16 IPS
X-50	65 IPS	16 IPS
X-100	65 IPS	16 IPS
X-600	65 IPS	16 IPS
X2-600	65 IPS	16 IPS
SUPERSPEED	65 IPS	16 IPS
X-650 YAG	75 IPS	19 IPS
X-660	75 IPS	19 IPS
X2-660	100 IPS	25 IPS
SUPERSPEED-660	100 IPS	25 IPS
VL200/300	50 IPS	10 IPS

CURRENT SYSTEMS

VLS DESKTOP	50 IPS	10 IPS
VLS PLATFORM	50 IPS	10 IPS
PLS PLATFORM	70 IPS	20 IPS
ILS INDUSTRIAL	70 IPS	20 IPS
XLS INDUSTRIAL		

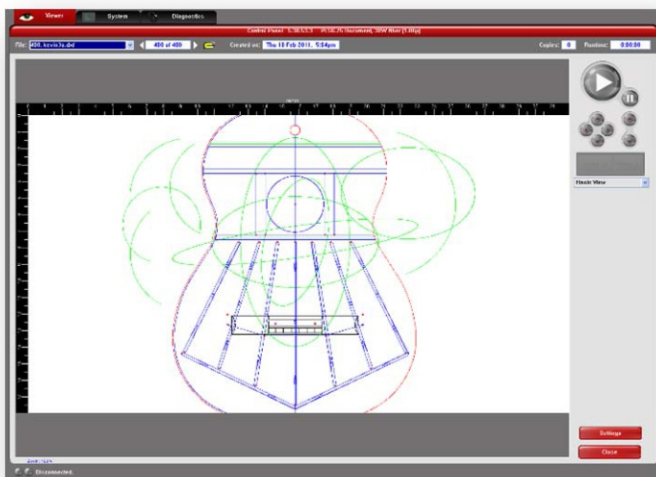
1. STRAIGHT LINES WILL REACH TOP SPEED IF DISTANCE PERMITS THE TIME TO RAMPUP/DOWN.
2. AGAIN IF DISTANCE PERMITS THE TIME TO RAMPUP/DOWN, THE AVERAGE PEAK VELOCITY FOR CURVES ON THE ILS/PLS IS 5 IPS AND FOR CURVES ON THE VLS DESKTOP/PLATFORM IS 3 IPS.
3. THE TIME TO RAMPUP/DOWN WILL VARY FROM MACHINE TO MACHINE.

APPROXIMATE SYSTEM SPEED EXAMPLES

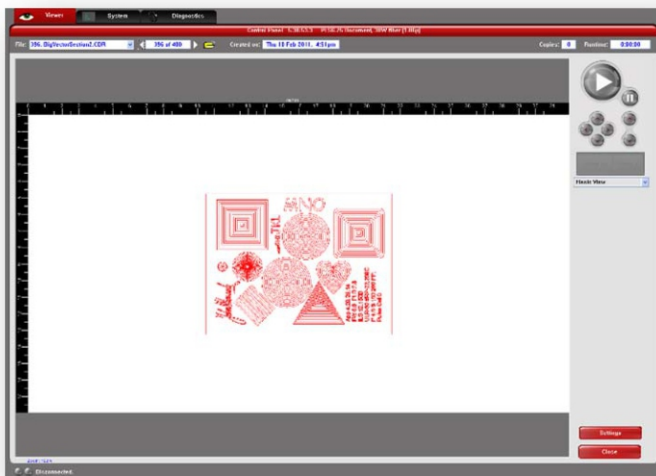


Job 1 - PLS	<u>ID5 Sorted</u>
Ave Speed (ips)	1.5
Total travel (mils)	298723
Total Time	2:54

Job 1 - VLS	<u>ID5 Sorted -Standard -Throughput</u>	
Ave Speed (ips)	0.821152	1.285714
Total travel (mils)	270970	270970
Total Time	4:55	3:30



Job 2 - PLS	<u>ID5 Sorted</u>
Ave Speed (ips)	6.29
Total travel (mils)	2778864
Total Time	0:07:39



Job 3 - PLS	<u>ID5 Sorted</u>	<u>DXF Sorted</u>
Ave Speed (ips)	1.74747	1.800321
Total travel (mils)	730722	756423
Total Time	0:06:58	0:07:00