

Rotary Setup

MAKE SURE THE ROTARY CABLE IS UNPLUGGED!

- 1) If using Air Assist remove the cone.
- 2) Install rotary bracket, do not tighten.
- 3) Power system up.
- 4) Using the touch pad, go to Preferences / Configuration / Set Rotary Axis. This number should be 2.625 Y (center of rotary):

ROT 2.625
POS 2.625
CANCEL
YES SAVE Y AXIS

If the ROT does NOT equal 2.625, adjust it by pressing the XY button and moving the appropriate front/back arrow button until the position displayed under POS equals 2.625. When it does, scroll to YES SAVE Y AXIS and press SELECT. This will take you to this screen:

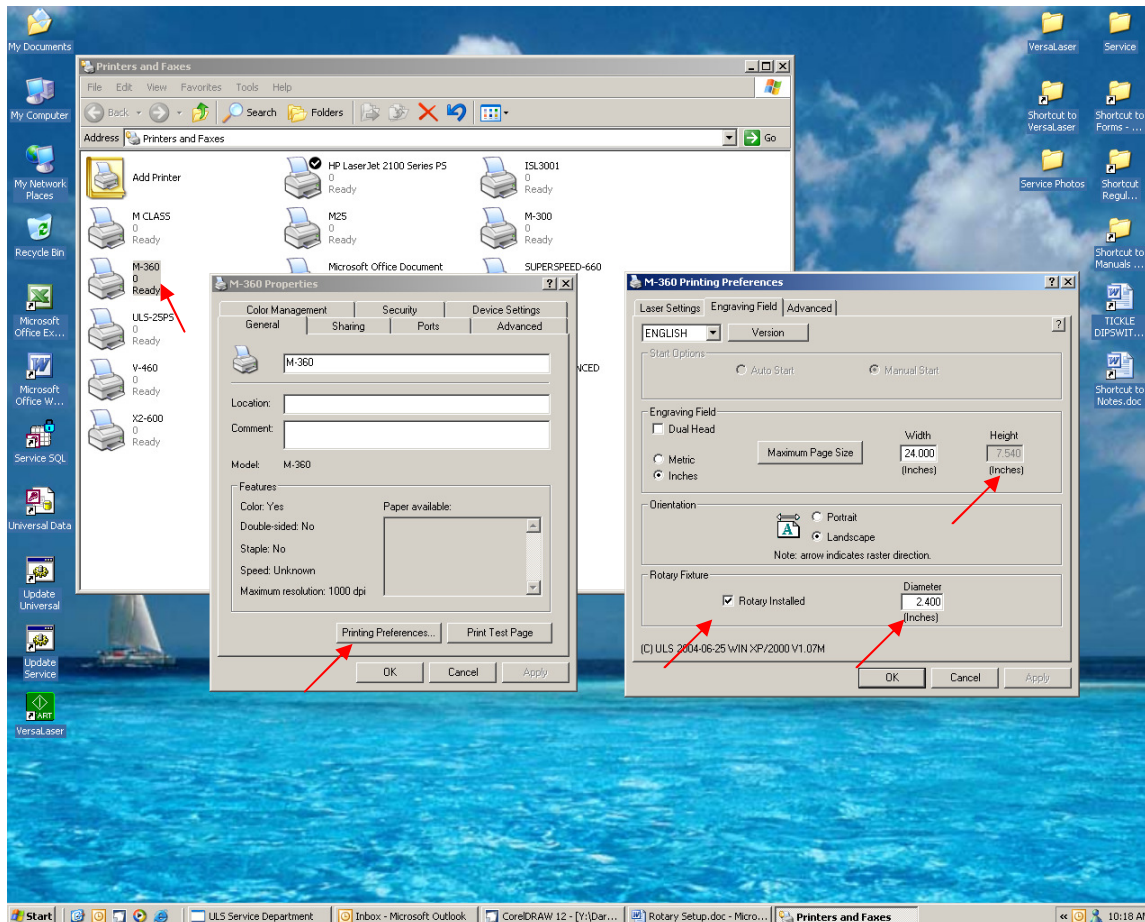
SET FOCUS POSITION
SET ROTARY AXIS
PORTS
LANGUAGE

Scroll to SET ROTARY AXIS and press SELECT. ROT should be equal to 2.625 now.

ESCAPE
ESCAPE

- 5) On the display, press the button labeled Z, using the arrow keys located next to the SELECT / ESCAPE keys lower the table.
- 6) Power system down.
- 7) Install rotary and plug in rotary connector.
- 8) Push rotary against the X axis ruler, tighten rotary bracket.
- 9) Power System up.

10) In the lower left corner of your computer screen select START, go to printers and faxes. Right click on the printer for your system, (example: M 360) select properties. Under the General tab, select Printing Preferences. After your printer driver opens, select Engraving Field and then select rotary installed.



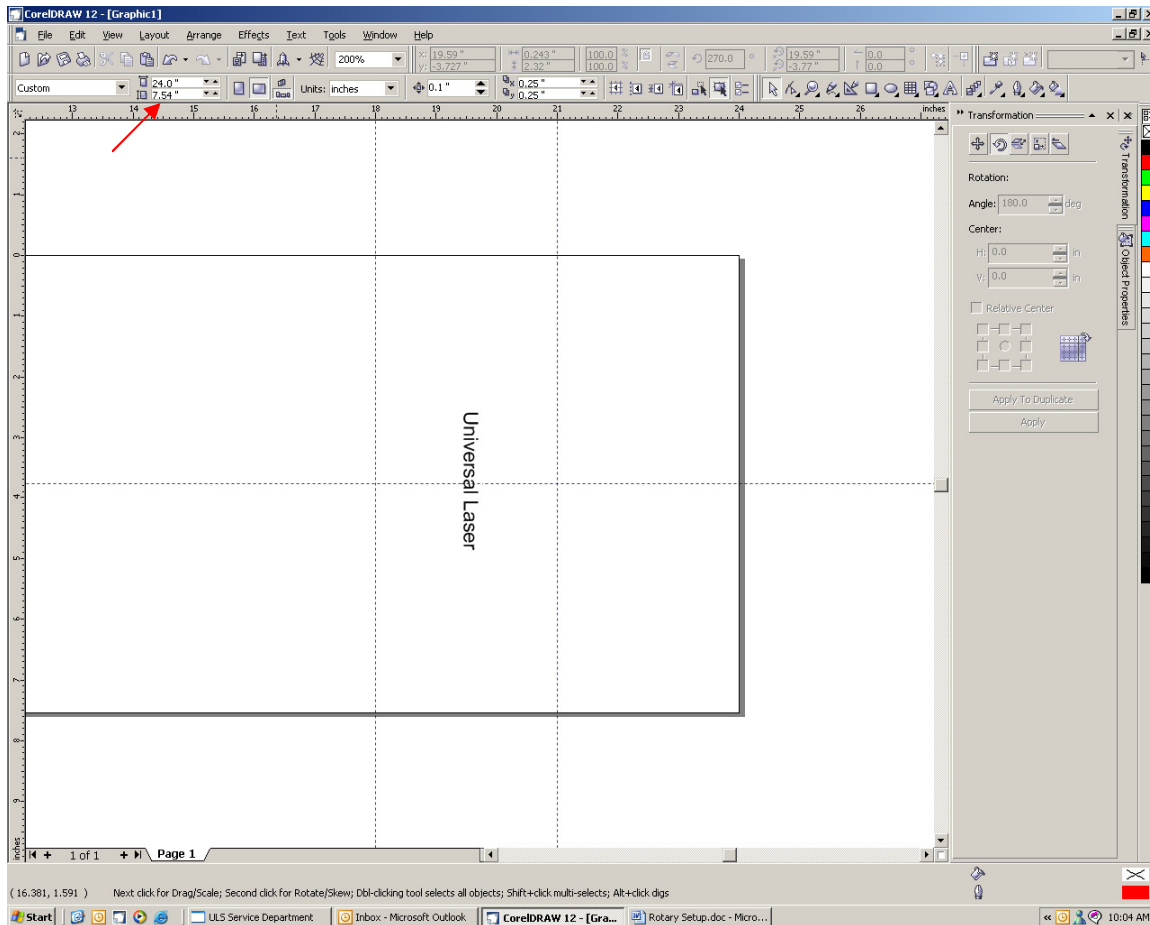
11) Input diameter of part to be marked. Example 2.4”

12) Record the number in the grayed out height box, this is the circumference of your part. For a part 2.4” in diameter the circumference is 7.540”. The printer driver calculates this value for you.

13) Choose OK to close all open windows.

14) Open Corel.

15) In Corel, enter the height 7.54" in the height window of Corel.



16) For alignment, drag the scales to the location you wish to engrave.

17) Using the arrow keys move focus carriage over your part to be engraved. Set focal height using focus tool.