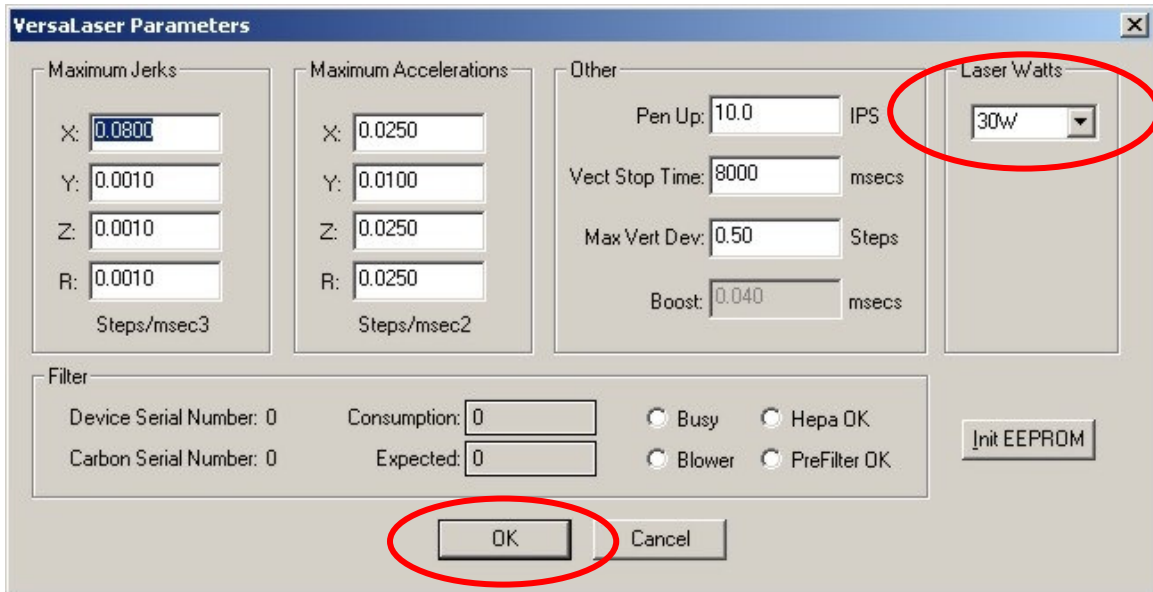


VersaLASER™ LASER POWER ADJUSTMENT

To alter the programmed Laser wattage value in a VersaLaser:

1. Open the VersaLaser Control Panel Software, and select the Setup page.
2. From the computer keyboard, press “Shift” + “Alt” + “8”. This will open up the VersaLaser Parameters box.



3. From the dropdown list “Laser Watts”, select the new wattage to be programmed.
4. Then press OK.
5. DO NOT alter any other Parameters!
6. DO NOT PRESS “init EEPROM”! This will erase the values stored in the EEPROM.