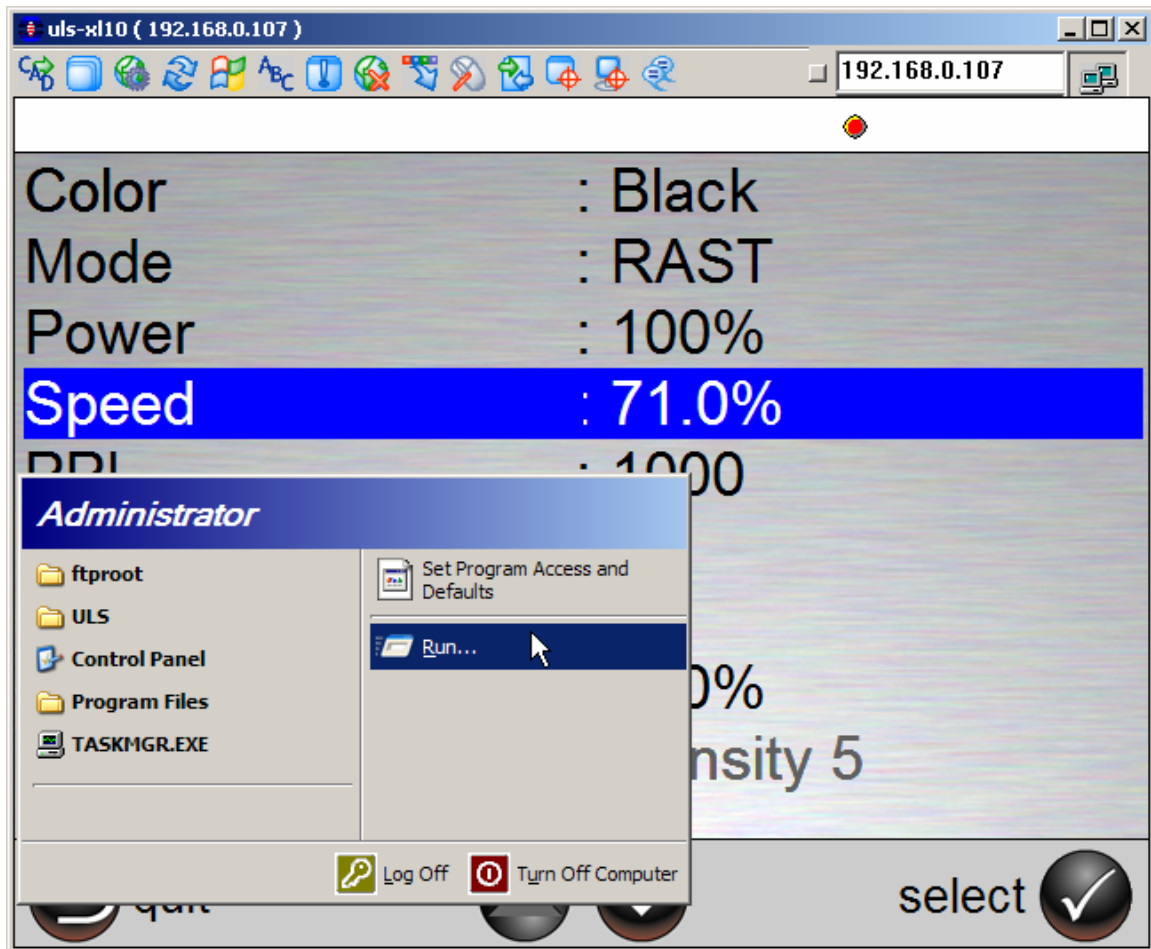


## How to Backup the XL's Setup Information

Virtually all of the XL's calibration and setup information is stored in the Windows Registry on the embedded computer. This information includes: lens focus positions, maximum height of the Z-axis, velocity and acceleration parameters, the mechanical tweaks, the autofocus height, the Rotary Y-axis position, etc.

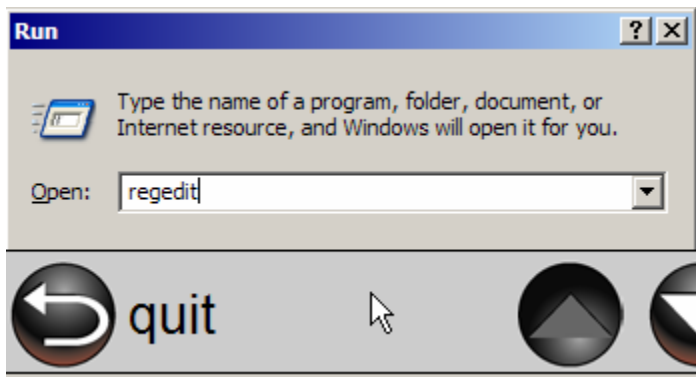
After an XL has been completely initialized and has successfully passed all Production tests, save this information on disk before the machine leaves the building.

To do so, connect to the XL via the VNC remote software. After connecting, click the "Windows" key at the top of the VNC screen. You should get a Windows menu. Select "**Run...**".

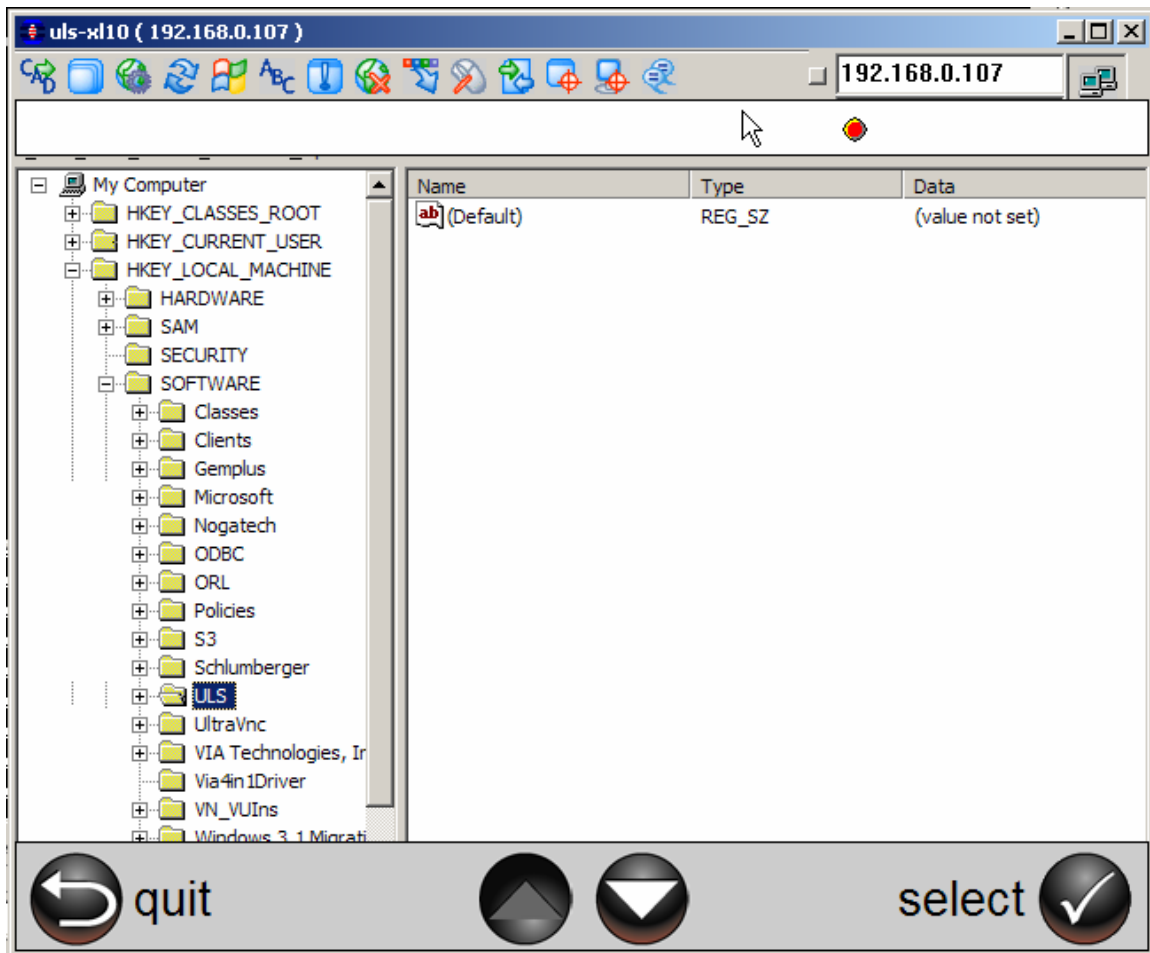


More...

At the “Run...” prompt, type “**regedit**”, and press **return**:

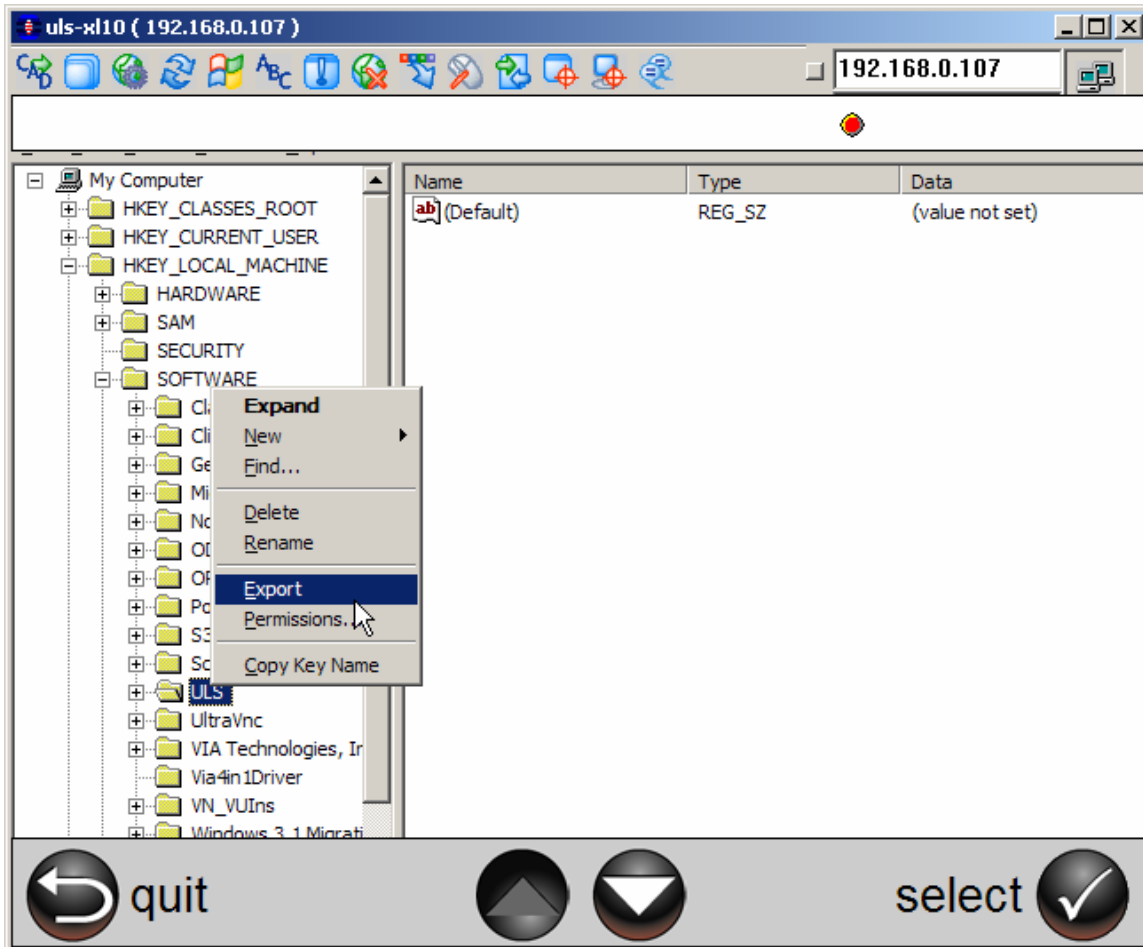


When **regedit** launches, navigate to the Registry key called HKEY\_LOCAL\_MACHINE\SOFTWARE\ULS, as show below.



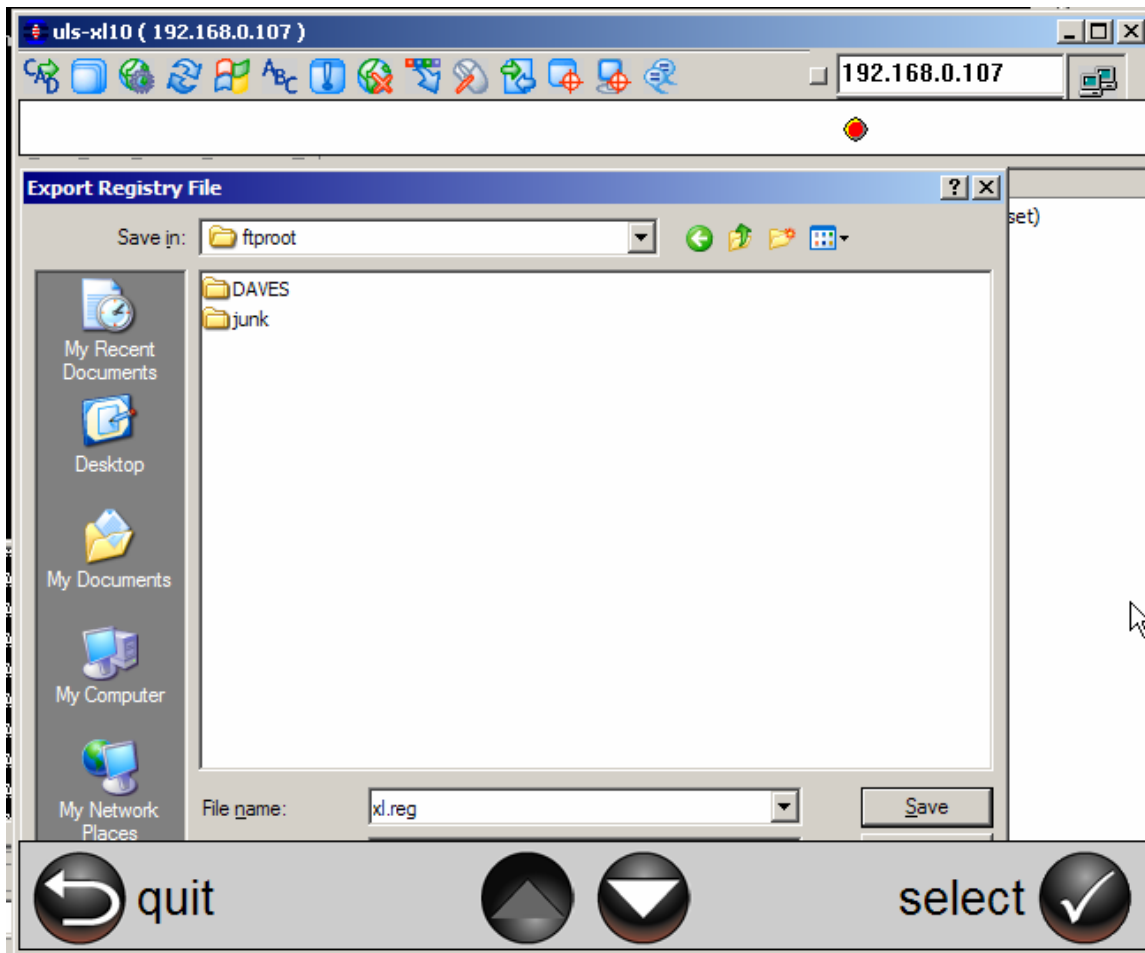
More...

Now right-click on the **ULS** key and select “**export**”:



More...

Save the data to a file called “c:\inetpub\ftproot\xl.reg”, as shown below.



Now transfer this file to the computer where we’re archiving XL backup files. To do this, press the File transfer button at the top of the screen, the one that looks like this:



More...

Select the **xl.reg** file saved previously on the **REMOTE MACHINE** (which is the XL) located in the directory **c:\inetpub\ftproot**. Select a target directory on the **LOCAL MACHINE** (your computer). Below is an example. I'm transferring the file to the TEMP directory on my C: drive. Press "**<< Receive**" to transfer the file:

