

## System Configuration Window

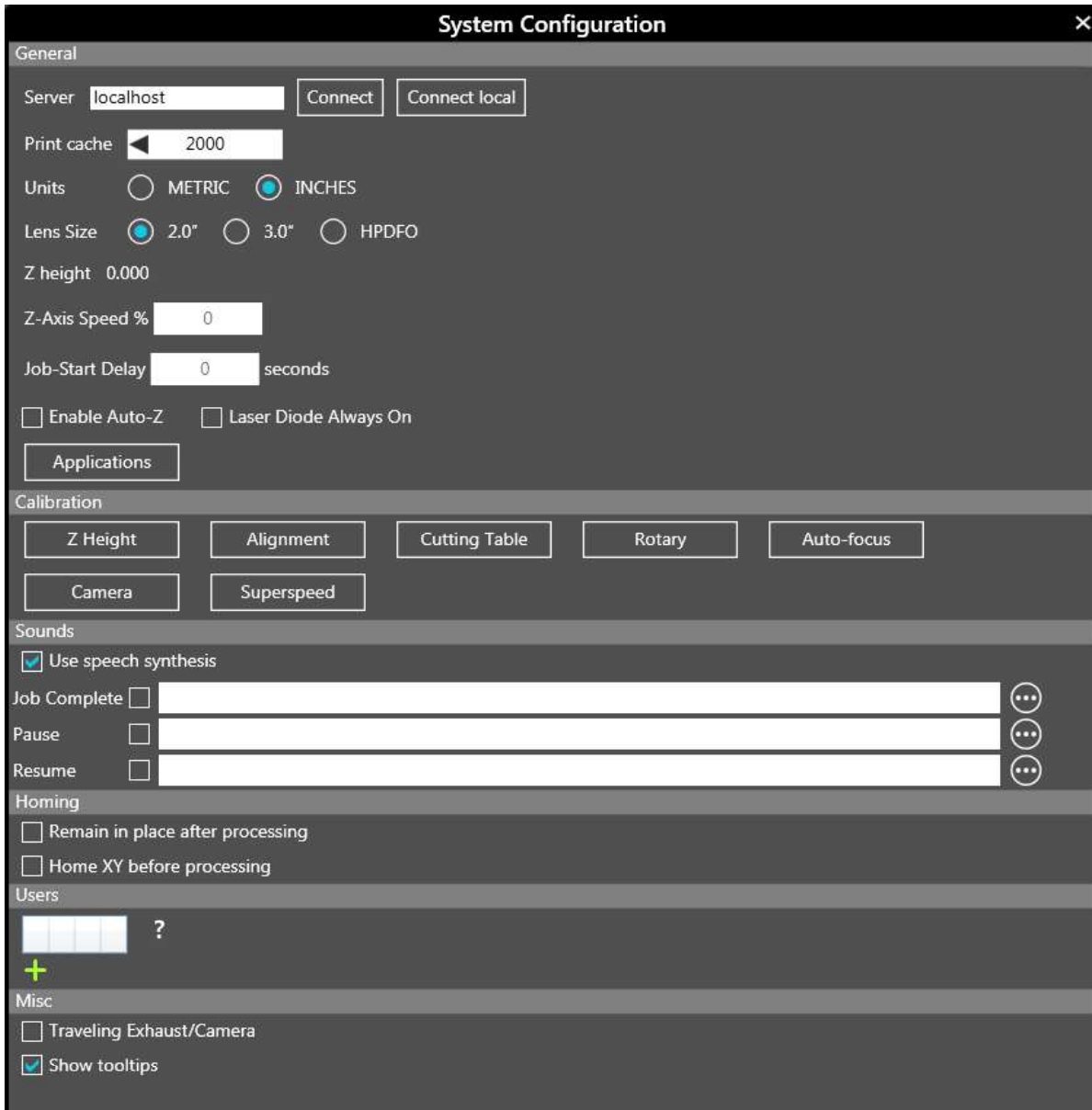
The **System Configuration** window allows for configuration of certain features of the laser system. If needed, calibration of the laser system is performed from this window.

Access this window by tapping the **System Configuration** button.

**Open System Configuration Window**



The **System Configuration** window displays.



The **System Configuration** window contains the following settings:

<b>General</b>	
<b>Server</b>	Displays the currently-selected laser system. Enter the name or IP address of another laser system and select <b>Connect</b> to connect to another laser system.
<b>Print Cache</b>	Enter the <i>maximum number of design files</i> that will be stored on the hard drive. If you exceed the number entered, the software automatically begins deleting the oldest design file as newer design files enter the queue, unless it's marked Permanent.
<b>Units</b>	Select <b>Metric</b> or <b>Inches</b> as the units of measure used.
<b>Lens Size</b>	Shows the currently-installed lens that is auto-detected by the laser system. This is important for proper function of the <b>Auto</b> mode and <b>Autofocus</b> , if installed. Lenses are calibrated to the laser system at the factory, but if a lens is replaced, it will need to be re-calibrated.
<b>Z Height</b>	Displays the current Z height position in relation to the lens size installed.
<b>Z-Axis Speed %</b>	Adjusts the speed by which the Z-Axis moves based on the percentage entered. Enter a value between <i>1% and 100%</i> .
<b>Job-State Delay</b>	Delay the start of all laser processes by the <i>entered value</i> .
<b>Enable Auto Z</b>	If activated, automatically moves the Z-axis to the <i>material thickness value</i> entered in the Laser Processing Settings component. If disabled, the Z-axis values in the color table are ignored and the focus will need to be set manually using the Focusing Tool. Make sure the Z-axis is properly-homed when using this function.
<b>NOTE:</b> <i>If a Rotary Fixture is currently installed this feature will be disabled.</i>	
<b>Laser Diode Always On</b>	<b>Tap</b> or <b>click</b> to place a <b>check mark</b> in the box to activate. If activated, the red laser pointer will remain on regardless of door status.