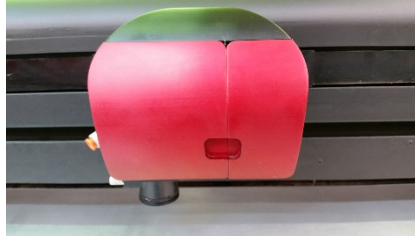


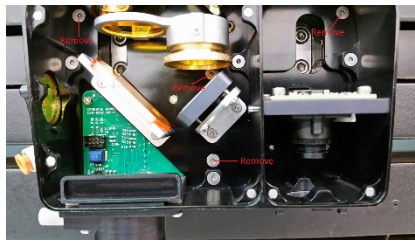
XLS MWH Carriage Board Replacement

P/N 133-0236-00B

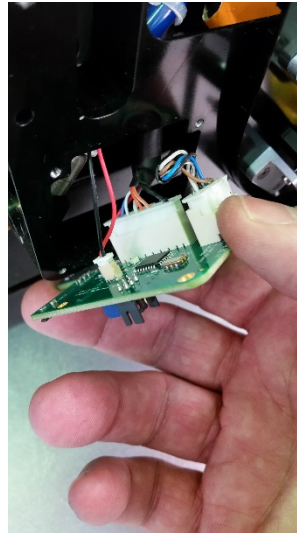
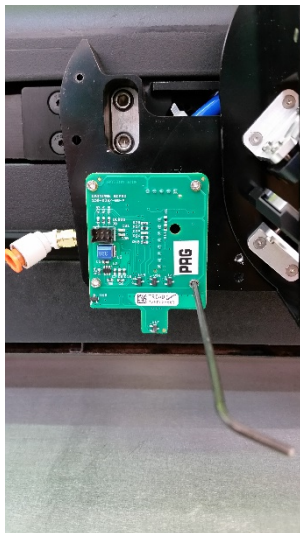
1. Remove the 2 red and 1 black covers.



2. Use a 1/16" hex wrench for removal of 4 screws shown below.



3. Carefully rotate XLS MWH Optics Housing to the right out of your way. Most likely the USB Cable to the UCR will disconnect. Don't reconnect until you're ready to reassemble.
4. Using a 5/64" hex Wrench, remove the 4 screws holding the Carriage Board into place.



5. Remove 3 connectors from the rear of Carriage Board.
6. Reassemble in reverse order.
7. Remember to verify UCR Camera USB is connected.