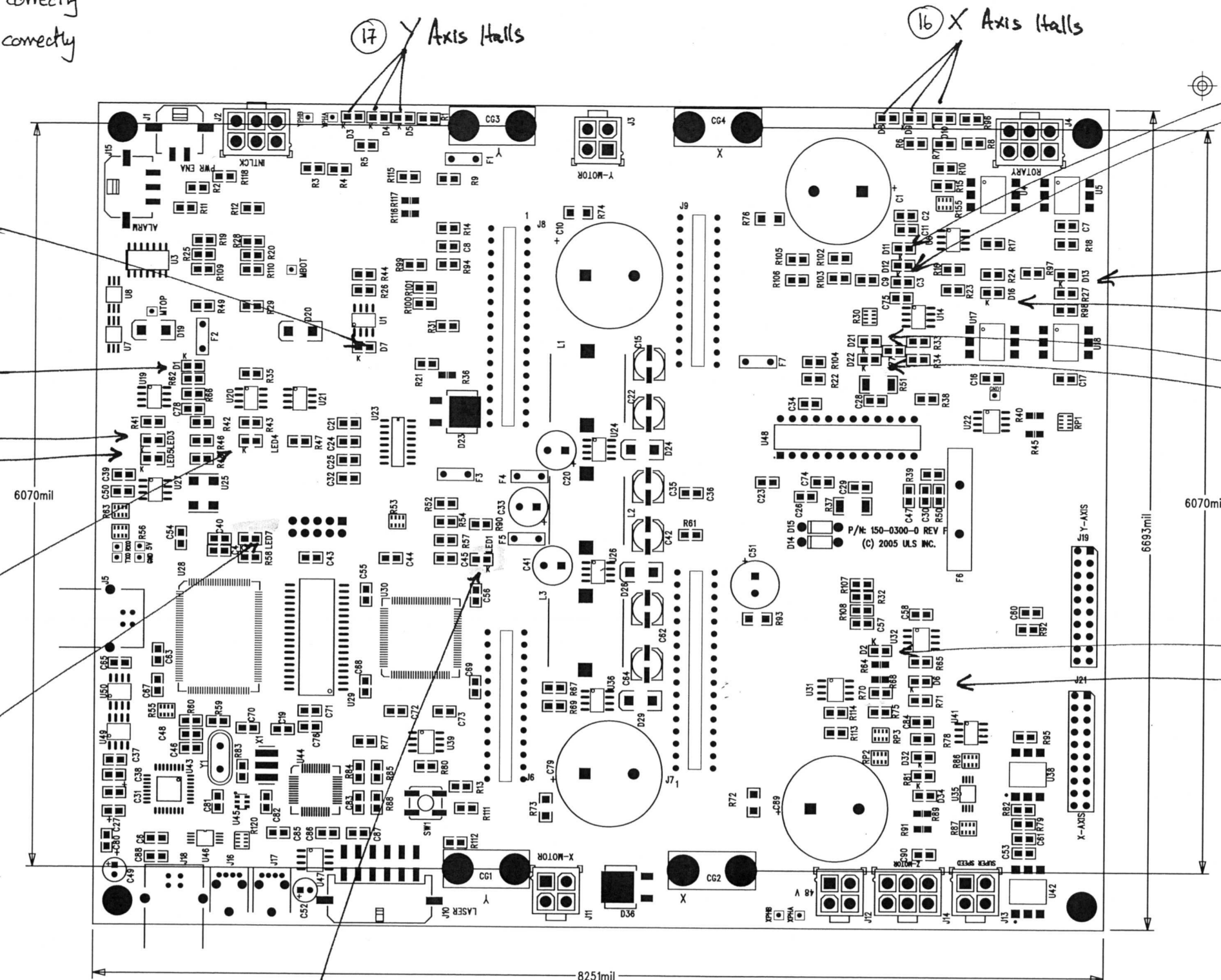


(16) LED's blink → X motor working correctly
 (17) LED's blink → Y motor working correctly
 LED's actually phase in/out



- (1) End of Travel
- (2) Collision Detect
- (3) Front Door
- (4) Top Door
- (5) Rear Door
- (6) CPU heartbeat

- (15) Rotary Detect
- (14) Rotary Detect
- (13) Auto focus transmit
- (12) Auto focus receive
- (11) X Home
- (10) Y Home
- (9) Z phase A
- (8) Z phase B

→ Rear Door
 ON: Rear door closed
 OFF: rear/top/front door open

→ CPU heartbeat
 BLINK: blinks when CPU is in run state
 ON:
 OFF:

→ FPGA heartbeat
 BLINK: FPGA running
 ON:
 OFF:

1500300AST.PHO - Thu Mar 31 09:38:09 2005
 Non applicable

UNIVERSAL LASER SYSTEMS			
UNIVERSAL LASER SYSTEMS SERVO CONTROLLER			
PART NO.:	150-0300-0	REV: F	DATE: 15-MAR-05
SILKSCREEN (TOP SIDE)		GERBER: 1500300B.ST.PHO	

- (10) X home: ON after homing is complete
- (11) Y home: ON after homing is complete
- (14) Rotary:
- (15) Rotary:

- (1) End of travel:
 ON = motion is stuck. Motor is stuck on one side
 OFF = normal state
- (2) Collision detect:
 ON: collision object detected perpendicular to y motion.
 Sensor works only in positive y direction
 OFF: Normal State
- (3) Front Door:
 ON: front door closed OFF: front door open
- (4) Top Door:
 ON: front door/top door ~~open~~ closed
 OFF: front door/top door open