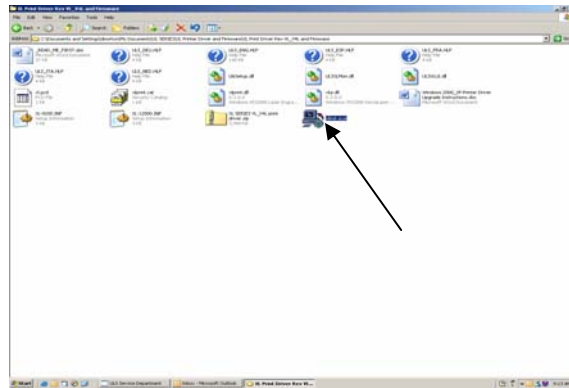
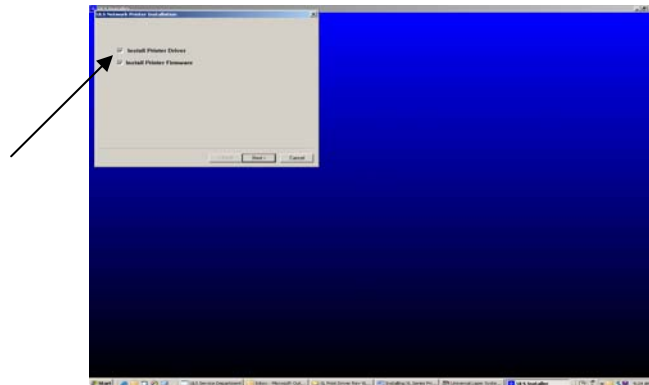


Installing XL Series Print Driver and Firmware

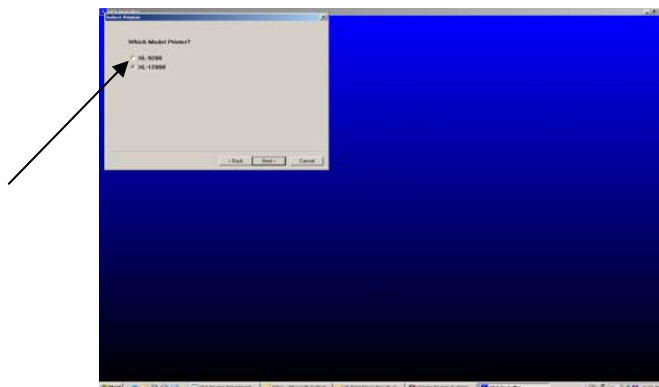
1. Power XL Series engraver on.
2. It's advised to always upgrade XL Series Print Driver when upgrading Firmware. To delete current XL Series Print Driver. Go to Control Panel / Printer and Faxes, right click on icon XL-XXXX and delete. While in Printers and Faxes go to File / Server Properties / Drivers. Scroll down to XL-XXXX, highlight and remove.
3. REBOOT COMPUTER TO COMPLETE PROCESS.
4. Insert CD containing XL series Print Driver and Firmware into CD drive, open drive.
5. Locate and double click on file xlinst.exe



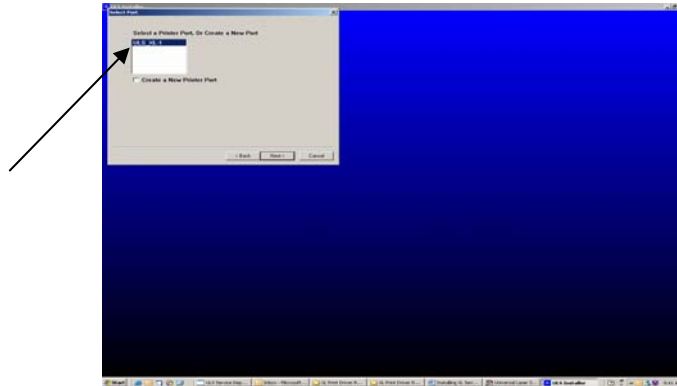
6. If 1st time installer, you will be prompted to install both XL Series Print Driver and XL Series Firmware, choose next.



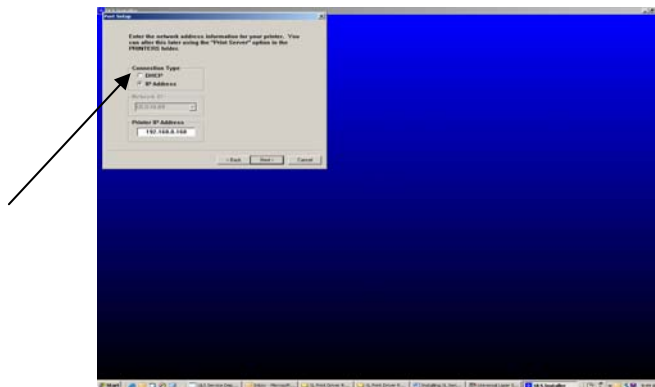
7. You will be prompted to choose which XL Series Model you wish to install.



8. Select the IP ID for the XL Series Engraver, choose next.



9. Next you will be prompted to choose between DHCP (Server Assigned IP Address), or IP Address (Manually Assigned IP Address). Contact IT personal for this information, choose next.



10. You've completed the installation, click finish.

