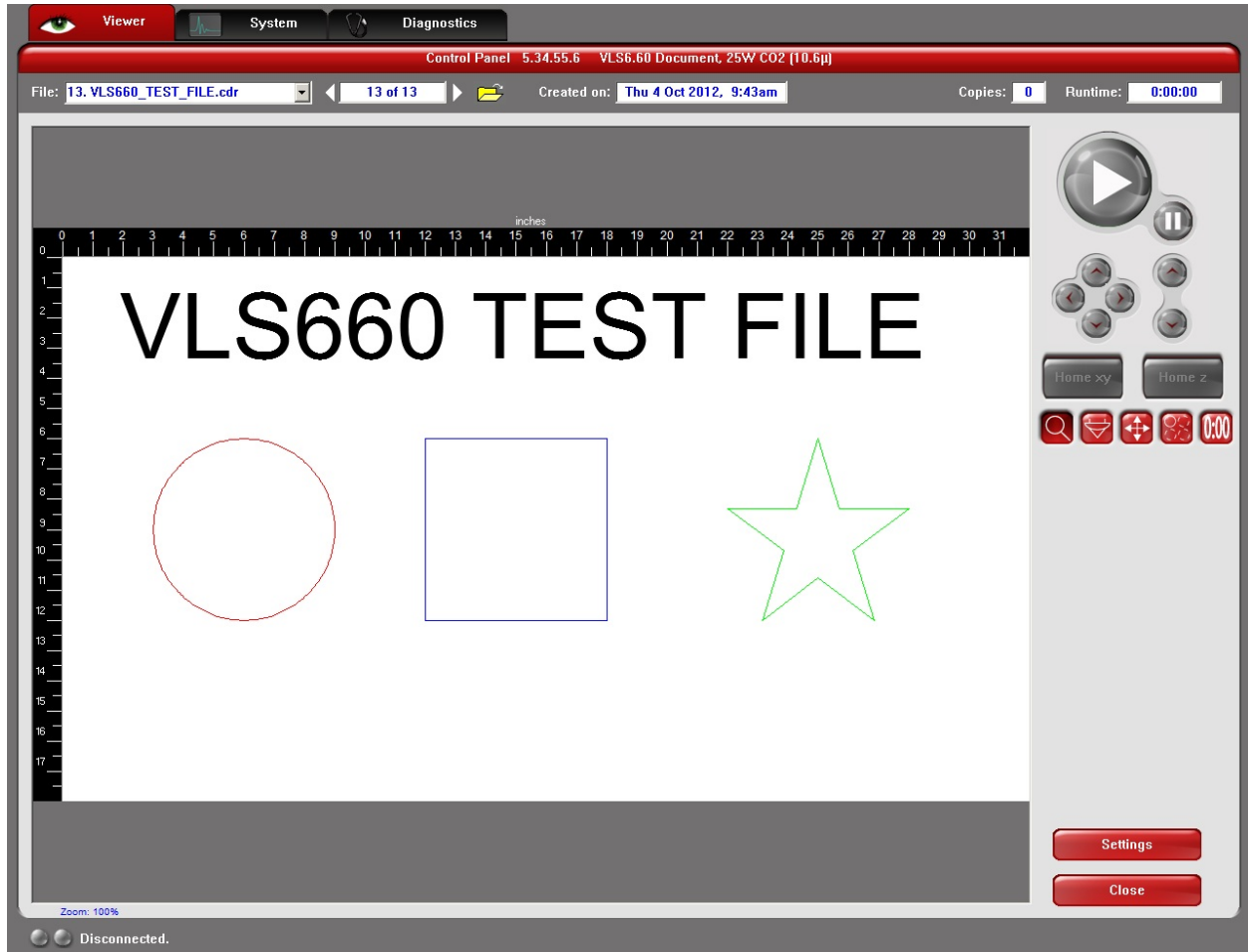


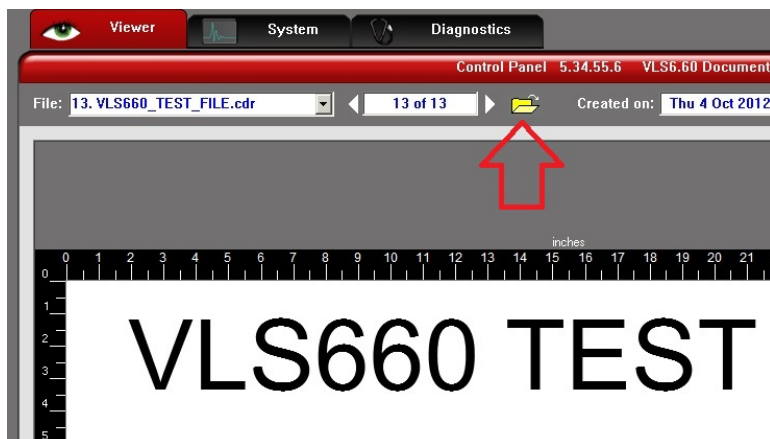
EMF File Collection

This document will describe how to save and retrieve .emf files through the UCP software. In this example, a Corel draw file named “VLS660_TEST_FILE.cdr” will be used to create the .emf file.

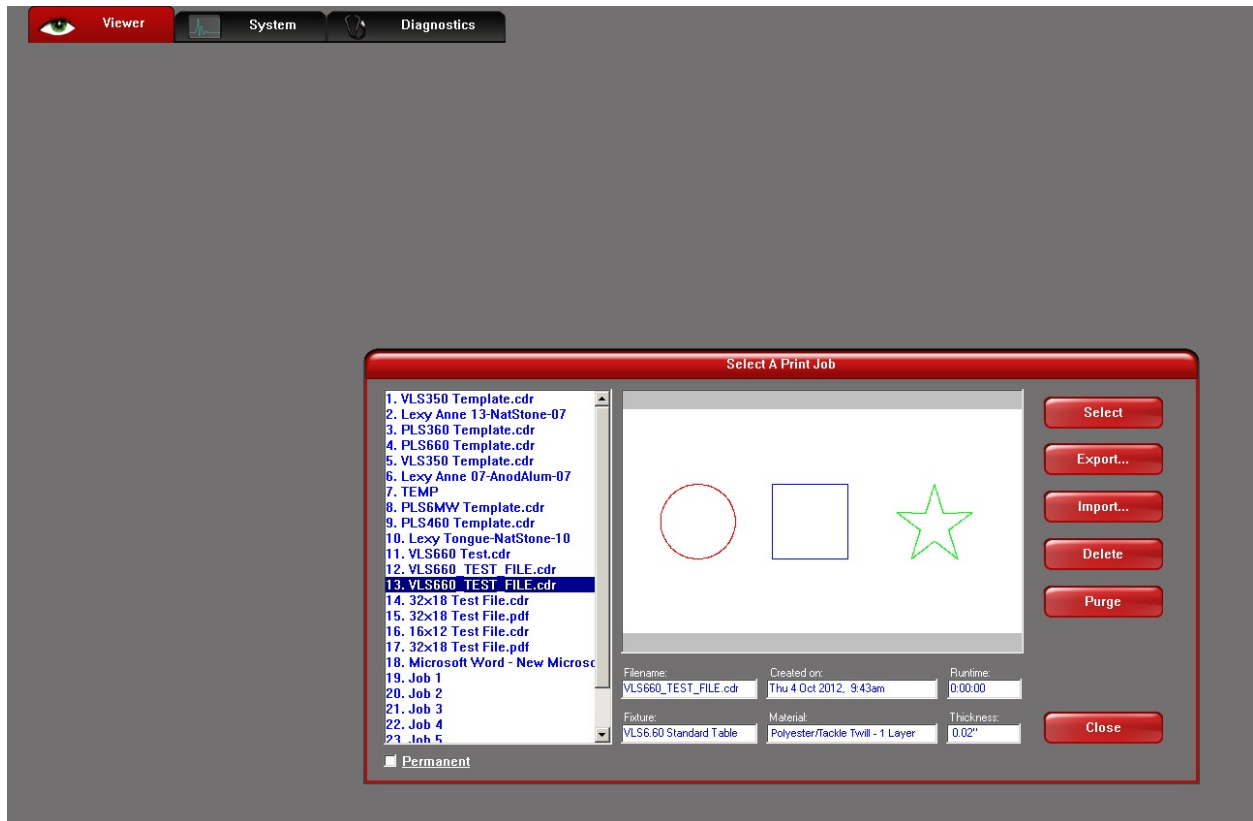
The VLS660_TEST_FILE.cdr has been sent to the UCP:



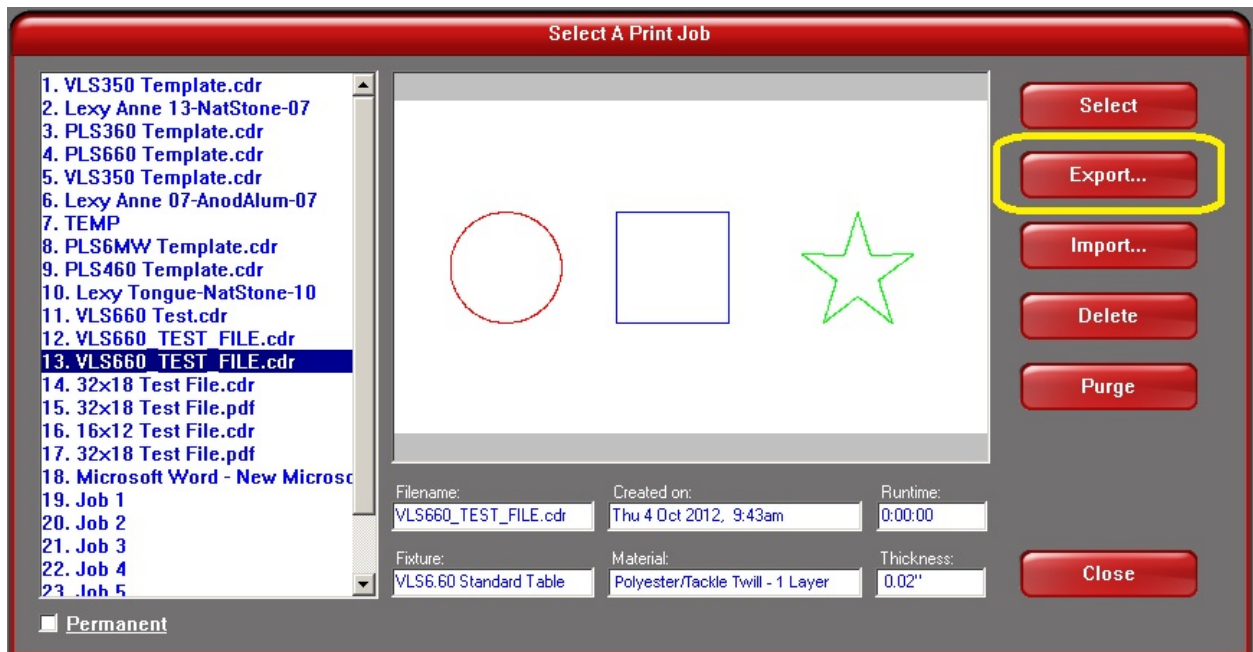
To start the process of saving the .emf file, click on the yellow folder at the top of the UCP software:



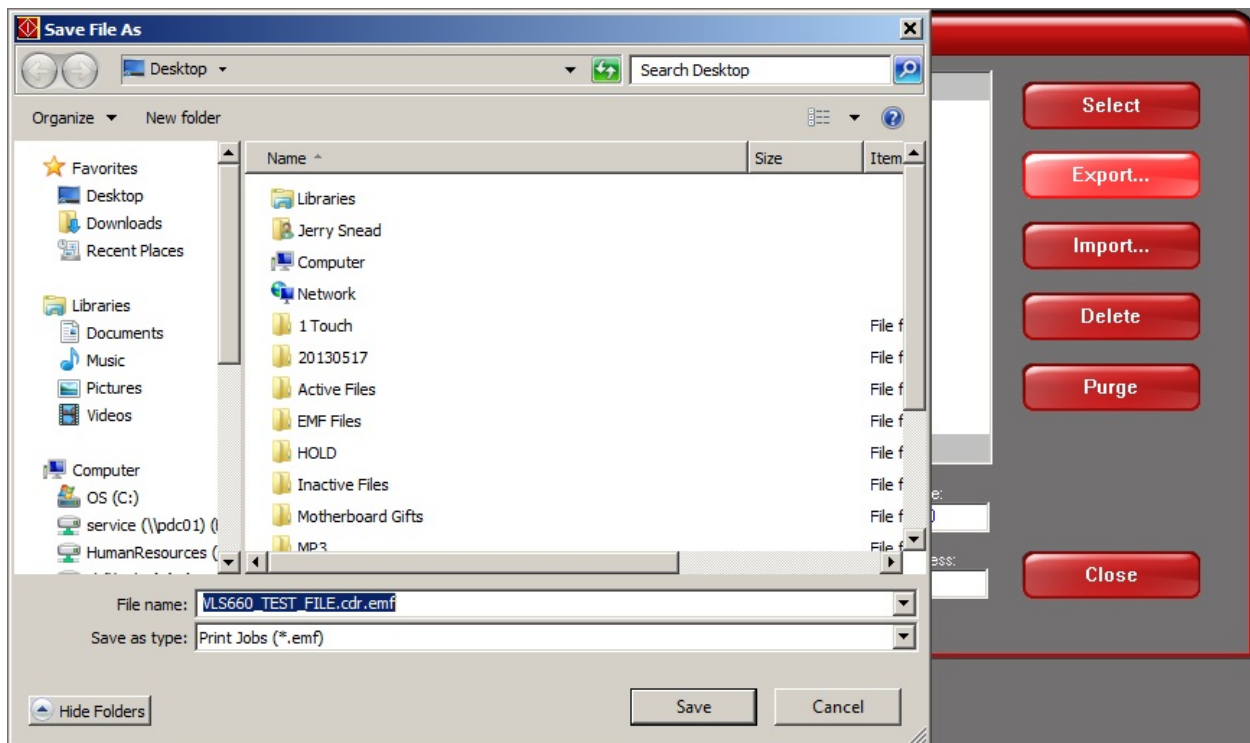
A window now opens:



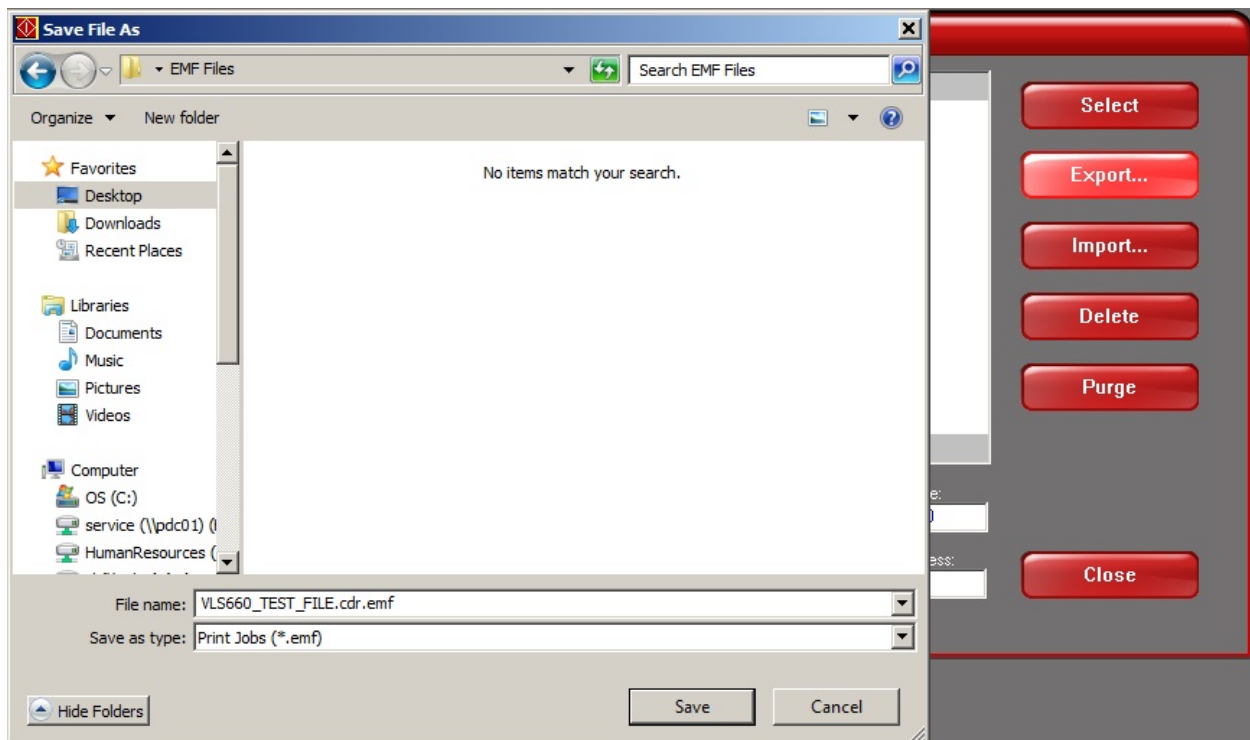
Click on the “Export...” button:



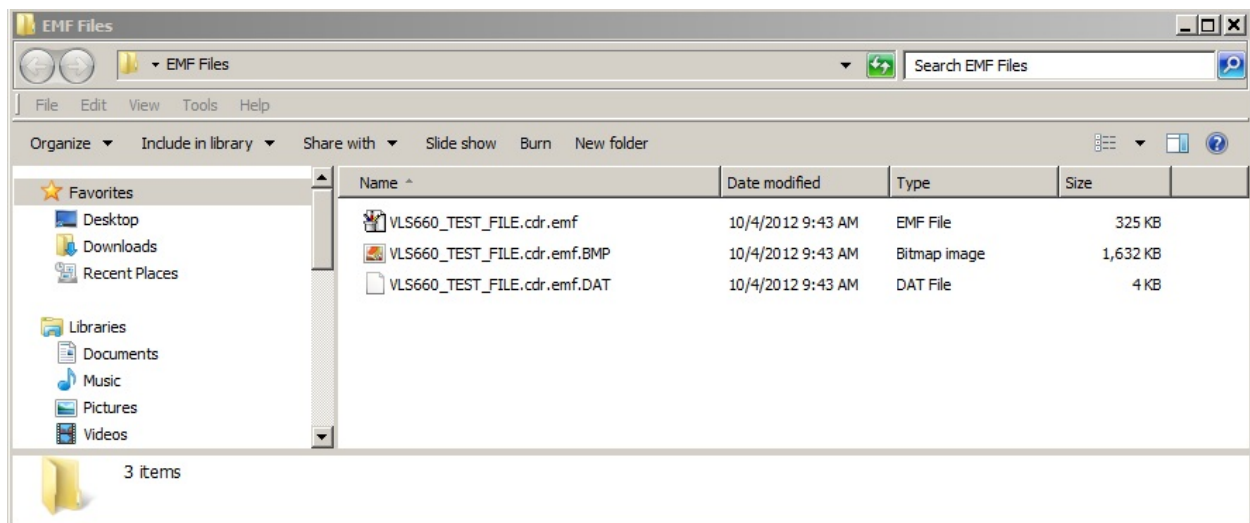
A Save File As window opens:



Navigate to the location on your computer (or network) where you want to save the .emf files. In this case, I have created a folder called “EMF Files” on my desktop and saved the files there:

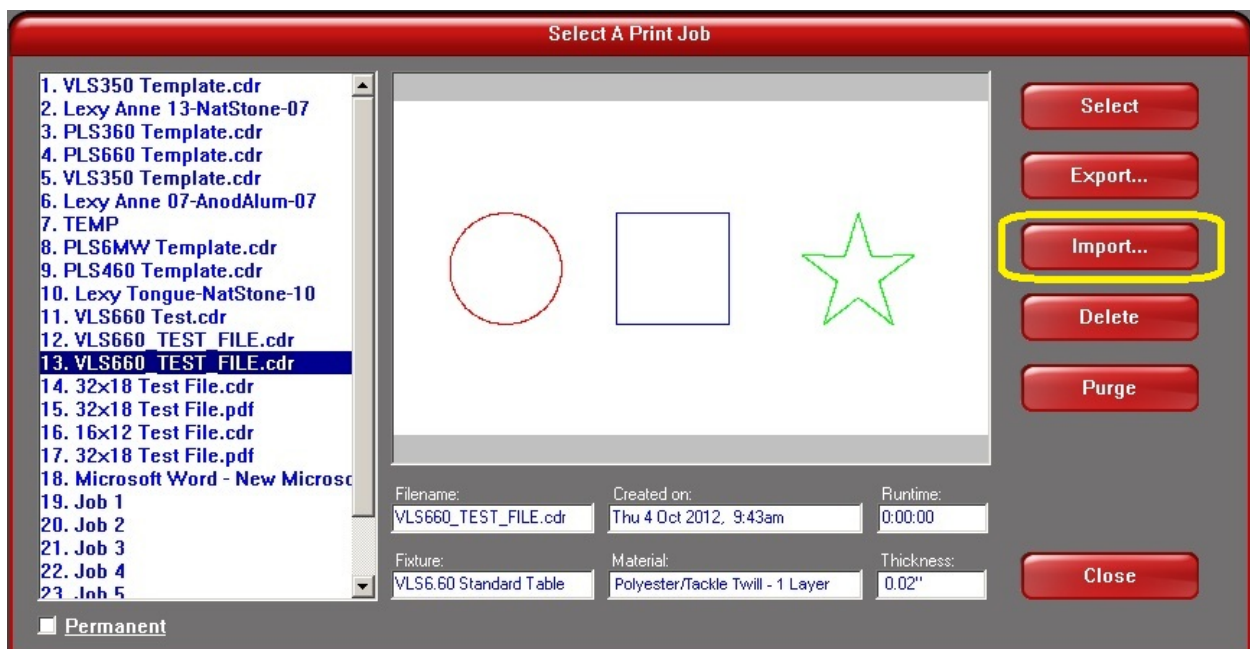


After clicking save on the Save button on the Save File As window, the Save File As window closes. Navigate to the folder where you have saved the files – in my case, I saved these on my desktop in a folder I created called “EMF Files”:



This actually creates three separate files: one with a .emf extension, one with a .bmp extension and one with a .dat extension. All three of these files will need to be saved and backed up if you want to restore them to the UCP at a later time.

To add the print job at a later time, just simply click the “Import...” button:



Then navigate through the Load Print Job window to where your .emf files are stored. **Be sure to select the file that ends in .emf to load the print job (not .dat or .bmp)**